



Alvis Drive, Yaxley Peterborough
Offers Over £420,000 Freehold

**Sharman
Quinney**

Key Features



- Spacious Detached Family Home
- Master Bedroom + En-Suite Shower Room
- Five Further Bedrooms + Three Further Bathrooms
- Lounge + Study + Kitchen/Diner + Family Sitting Area
- Downstairs Shower Room + Utility Room

Good Size Detached Family Home split over three floors, found in a popular area of Yaxley in a Cul-De-Sac, close to local shops and schools, in brief the accommodation comprises of, Entrance Hall with stairs to the first floor landing and doors giving access to the Downstairs Shower Room, Study, Lounge with double doors to the Kitchen/Diner which is fitted with a range of base and eye level units, cupboards and drawers, worktop space with a one and quarter sink unit, space for a range cooker, fridge/freezer, plumbing for a dishwasher, opening to the family sitting area with French doors to the rear garden, Utility Room is fitted with a matching range of base and eye level units, worktop space, sink unit, plumbing for a washing machine, space for a tumble dryer, door to side. First Floor Landing has stairs to the second floor landing and doors to Four Bedrooms, three



piece Family Bathroom, off Bedroom 1 there is a door to the three piece En-Suite Bathroom, Second Floor Landing has access to Two Further Bedrooms and a second Three Piece Bathroom. Outside to the front driveway providing off road parking and leads to the Double Garage which been split into two separate storage areas by a stud wall, Rear Garden is enclosed laid mainly to lawn with a paved patio seating area.

Entrance Hall -

Study - 10'5" x 8'1"

Downstairs Shower Room - 4'72max x 2'4"max (excluding shower cubicle)

Lounge - 16'5" x 10'9" Excluding bay window)

Kitchen/Diner - 25'5"max x 9'9"max (including recess)

Family Sitting Area - 12'1 x 9'7"

Utility Room - 6'x 5'2"

First Floor Lansing:

Master Bedroom - 13'5" x 9'9" (excluding door recess)

En-Suite Bathroom - 8'4"max x 4'7"max (l/shaped room)

Bedroom 2 - 12' x 8'9"

Bedroom 3 - 9'x 8'3"

Bedroom 4 - 11'2"max x 7'9"max (including recess)

Family Bathroom - 8'max x 5'6"mx

Second Floor Landing:

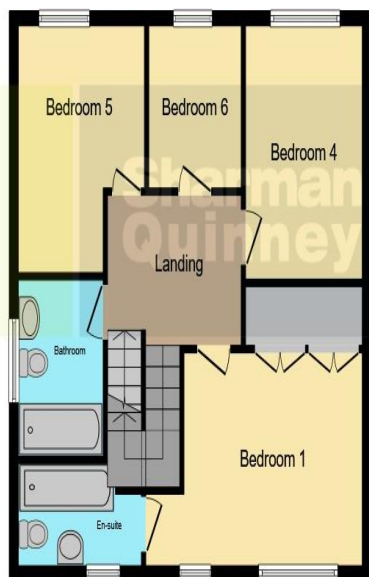
Bedroom 5 - 13'5"max x 12'5"max (excluding recess & excluding step up to window)

Bedroom 6 - 11'4"max 12'max (irregular shaped

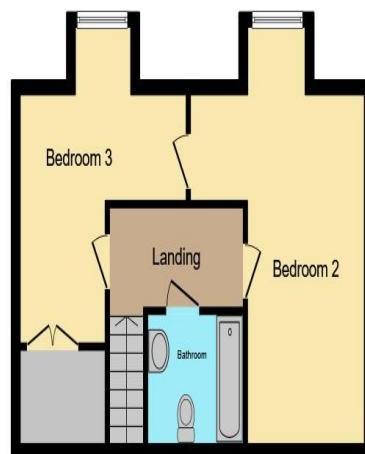




Ground Floor



First Floor



Second Floor



room/ including recess & window)
 Bathroom - 5'1"max 4'2"max
 Double Garage - (split into two storage areas by a stud wall)

This floorplan is for illustrative purposes only and is not drawn to scale. Measurements, floor-areas, openings and orientations are approximate. They should not be relied upon for any purpose and do not form any part of an agreement. No liability is taken for any error or mis-statement. All parties must rely on their own inspections.

To view this property call Sharman Quinney on:
01733 245400

Selling your property?

Contact us to arrange a **FREE** home valuation.

 01733 245400

 Unit 19 Maltings Square, Broadway Shopping Centre, Yaxley, Cambridgeshire, PE7 3EW

 yaxley@sharmanquinney.co.uk

 www.sharmanquinney.co.uk



 SCAN ME



Sharman Quinney Holdings Limited is registered in England and Wales under company number 4174227, Registered Office is Cumbria House, 16-20 Hockliffe Street, Leighton Buzzard, Bedfordshire, LU7 1GN. VAT Registration Number is 500 2481 05.

1: These particulars do not constitute part or all of an offer or contract. 2: The measurements indicated are supplied for guidance only and as such must be considered incorrect. 3: Potential buyers are advised to recheck the measurements before committing to any expense. 4: Sharman Quinney has not tested any apparatus, equipment, fixtures, fittings or services and it is the buyers interests to check the working condition of any appliances. 5: Sharman Quinney has not sought to verify the legal title of the property and buyers must obtain verification from their legal representative. 6: Intending purchasers will be asked to produce identification documentation at a later stage and we would ask your co-operation in order that there will be no delay in agreeing the sale. Ref: YAX203919 - 0001

