



# OLD HOUSE FARM

Sawbridge, Rugby, Warwickshire



## A LOVELY GRADE II LISTED FORMER FARMHOUSE

This beautifully maintained brick-and-timbered, thatched property has a contemporary east wing, gardens, paddocks, stables and outbuildings, set in more than 6 acres of land.



Local Authority: Rugby Borough Council

Council Tax band: G

Tenure: Freehold

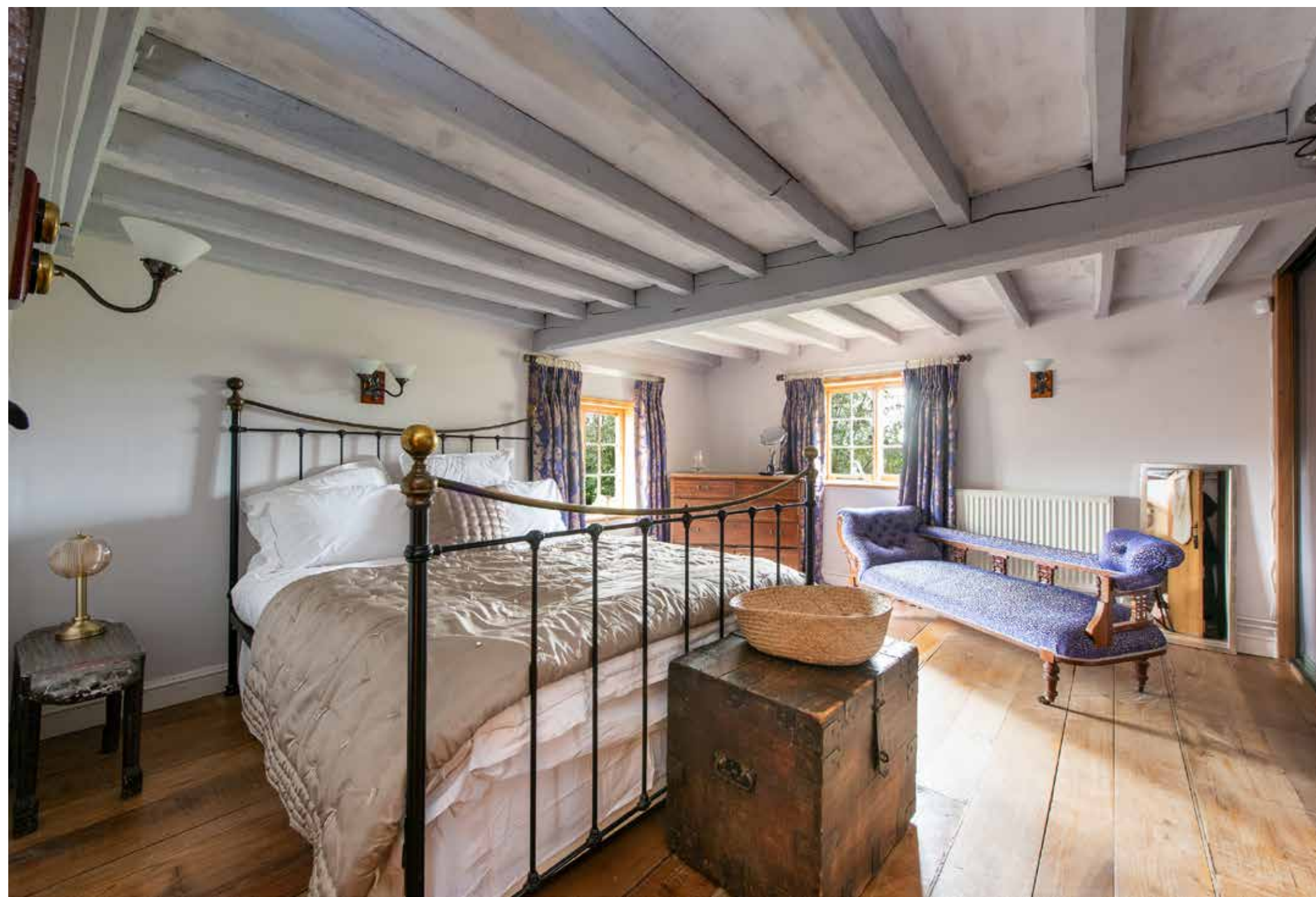


## LOCATION

Old House Farm sits behind the village green in the hamlet of Sawbridge, within the parish of Wolfhamcote and close to the attractive village of Willoughby on the Warwickshire/Northamptonshire border. Willoughby offers a parish church, village hall and The Rose public house, with further everyday amenities available in nearby Dunchurch. The location is excellent for commuters, with convenient access to Birmingham, Coventry, Northampton and Leicester. Rugby provides Intercity rail services to London Euston in under an hour.

Equestrian facilities are a particular highlight, with Rugby Riding Club, Rugby Polo Club, Onley Grounds and Aston-le-Walls eventing centre all within easy reach. The central location also provides convenient access to riding competitions and shows nationwide.





## THE PROPERTY

Dating from the 17th century and altered in the 19th, Old House Farm offers around 2,800 sq ft of beautifully renovated accommodation, blending original character with a striking contemporary cedar-clad extension linked by a glazed lobby. The house retains superb period features including timberwork, inglenook fireplaces, a bread oven and flagstone, tiled and boarded floors.

The property was sensitively restored, about 25 years ago, with new heating, plumbing and wiring, modern bath and shower rooms and built-in wardrobes. At the heart of the home is a stunning vaulted kitchen with exposed trusses, an Aga and traditional cabinetry, opening into an oak-framed garden room with wide doors to the patio and a wood burner.

The cosy sitting room in the oldest part of the house features beams and a stone inglenook, and connects via the glazed link to a contemporary family room with sliding doors to the terrace and the principal suite above. A generous utility/boot room and WC complete the ground floor.

Upstairs, two character bedrooms and a family shower room lead from the sitting room staircase. The second floor offers a further bedroom and a spacious bathroom.





## GARDENS AND GROUNDS

Old House Farm is approached through a five-bar gate into a block-paved courtyard, leading to a substantial brick outbuilding with three stables, storage, a secure tack room, a double garage and a large first-floor space above.

A rose-covered pergola leads to the house, which sits within generous lawned gardens featuring a pond, mature fruit trees, shrubs, a large patio, flower beds and a children's play area. Behind the stable and garage block is a productive vegetable garden with raised beds, a greenhouse and a further store barn. There is also separate access to the adjoining fields, one with a field shelter, traditional boundary hedges and classic Warwickshire ridge-and-furrow contours.

A footpath crosses the fields, offering direct access to the surrounding countryside, while a nearby bridle path provides excellent off-road hacking.





## SERVICES AND DIRECTIONS

Mains electricity and metered mains water are connected to the property. Private sewerage treatment plant. Oil-fired central heating, part with underfloor heating, telephone, and broadband.

Directions: In Sawbridge, the property is situated behind the village green and is accessed across the green (CV23 8BB)

What3words///disco.lodge.product





James Way

01789 297735

james.way@knightfrank.com

Knight Frank Stratford-upon-Avon

Bridgeway House, Bridgeway

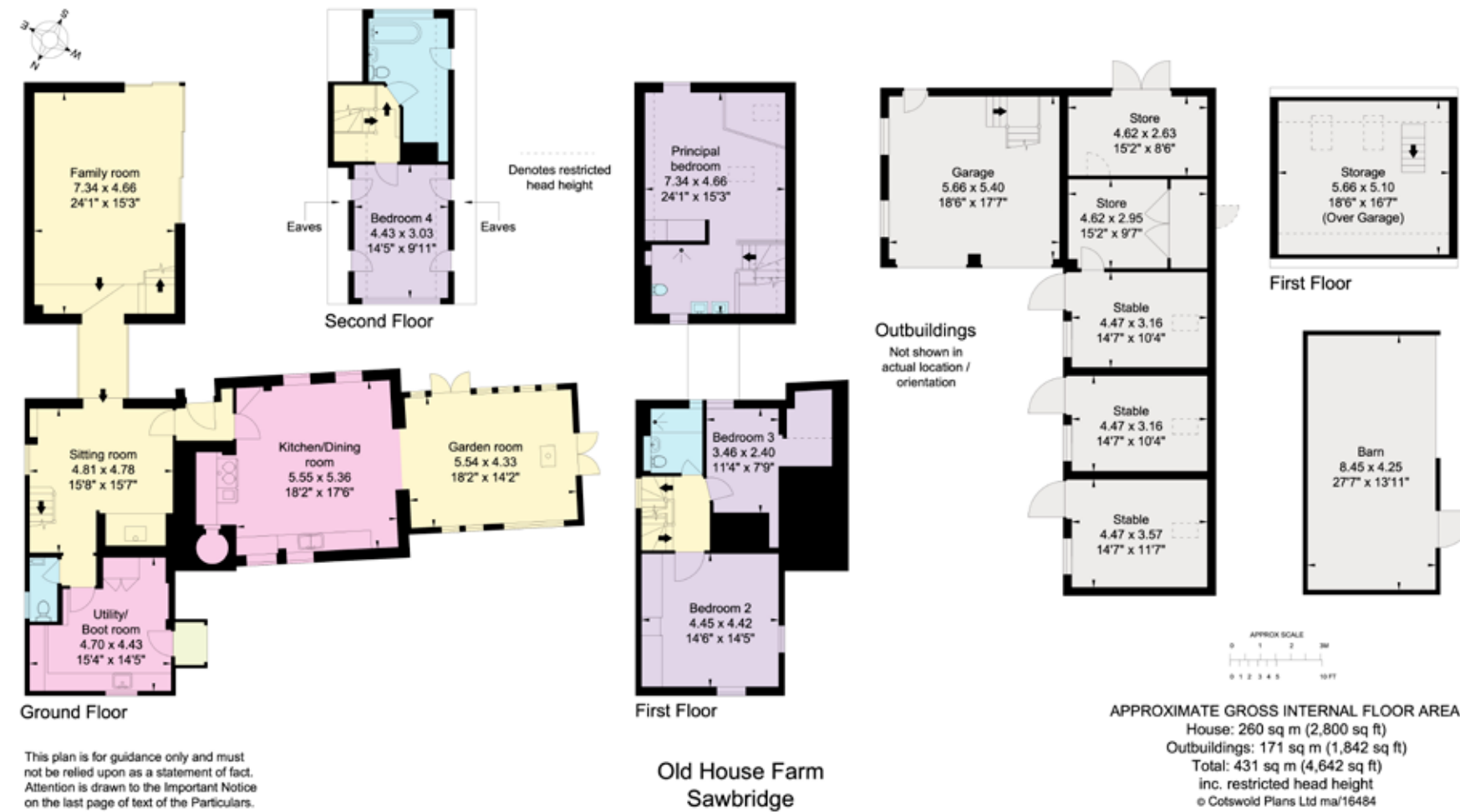
Stratford-upon-Avon, Warwickshire, CV37 6YX

knightfrank.co.uk

Your partners in property

1. Particulars: These particulars are not an offer or contract, nor part of one. You should not rely on statements given by Knight Frank in the particulars, by word of mouth or in writing ("information") as being factually accurate about the property, its condition or its value. Neither Knight Frank nor any joint agent has any authority to make any representations about the property, and accordingly any information given is entirely without responsibility on the part of Knight Frank. 2. Material Information: Please note that the material information is provided to Knight Frank by third parties and is provided here as a guide only. While Knight Frank has taken steps to verify this information, we advise you to confirm the details of any such material information prior to any offer being submitted. If we are informed of changes to this information by the seller or another third party, we will use reasonable endeavours to update this as soon as practical. 3. Photos, Videos etc: The photographs, property videos and virtual viewings etc. show only certain parts of the property as they appeared at the time they were taken. Areas, measurements and distances given are approximate only. 4. Regulations etc: Any reference to alterations to, or use of, any part of the property does not mean that any necessary planning, building regulations or other consent has been obtained. A buyer must find out by inspection or in other ways that these matters have been properly dealt with and that all information is correct. 5. Fixtures and fittings: A list of the fitted carpets, curtains, light fittings and other items fixed to the property which are included in the sale (or may be available by separate negotiation) will be provided by the Seller's Solicitors. 6. VAT: The VAT position relating to the property may change without notice. 7. To find out how we process Personal Data, please refer to our Group Privacy Statement and other notices at <https://www.knightfrank.com/legals/privacy-statement>.

Particulars dated March 2026. Photographs and videos dated March 2026. All information is correct at the time of going to print. Knight Frank is the trading name of Knight Frank LLP. Knight Frank LLP is a limited liability partnership registered in England and Wales with registered number OC305934. Our registered office is at 55 Baker Street, London W1U 8AN. We use the term 'partner' to refer to a member of Knight Frank LLP or an employee or consultant. A list of members names of Knight Frank LLP may be inspected at our registered office. If you do not want us to contact you further about our services then please contact us by either calling 020 3544 0692, email to [marketing.help@knightfrank.com](mailto:marketing.help@knightfrank.com) or post to our UK Residential Marketing Manager at our registered office (above) providing your name and address.





Date: 02 April 2026  
Our reference: STR012696948

## Old House Farm, Sawbridge, Rugby, CV23 8BB

We have pleasure in enclosing details of the above property for which we are quoting a guide price of £1,675,000.

Please let us know if you need any further information about the property or surrounding area and we will be delighted to provide it.

Full details of all our properties and a wide range of services can be viewed online at [knightfrank.co.uk](https://knightfrank.co.uk). You can also receive early information on new properties coming on to the market by signing up to [My Knight Frank](#).

For additional information or to make arrangements to view the property, please get in touch.



### **KNIGHT FRANK LLP**

Enc:

**James Way**  
Partner, Head of Midlands Sales  
+44 1789206950  
[james.way@knightfrank.com](mailto:james.way@knightfrank.com)

**Evey Hadley**  
Negotiator  
+44 1789206964  
[evey.hadley@knightfrank.com](mailto:evey.hadley@knightfrank.com)

**Knight Frank, Stratford**  
Bridgeway House, Bridgeway, Stratford upon Avon, CV37 6YX  
+44 1789 297 735

[knightfrank.co.uk](https://knightfrank.co.uk)

Your partners in property

Knight Frank LLP is a limited liability partnership registered in England and Wales with registered number OC305934. Our registered office is at 55 Baker Street, London W1U 8AN. We use the term 'partner' to refer to a member of Knight Frank LLP, or an employee or consultant. A list of members' names of Knight Frank LLP may be inspected at our registered office.

Regulated by RICS

V4.3 Sep 24