



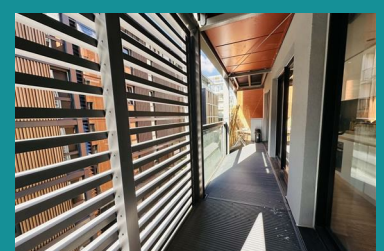
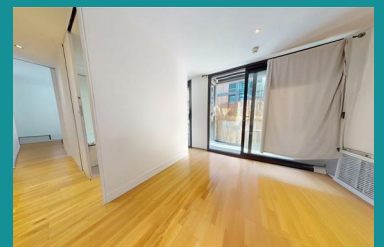
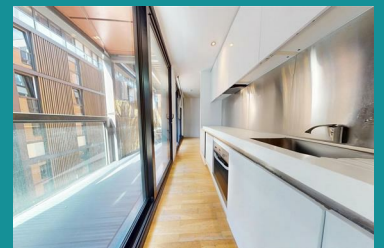
## Apartment 306 Moho, Manchester, M15 4FY

**£100,000**



**\*\* BEING SOLD VIA SECURE SALE ONLINE BIDDING. TERMS & CONDITIONS APPLY. STARTING BID £100,000 \*\* SECURE UNDERGROUND PARKING SPACE INCLUDED \*\* EWS1 FORM WITH A1 RATING \*\*** This bright third floor apartment forms part of a popular Urban Splash development in the quiet and historic Castlefield area of Manchester, just a short walk from the city centre via the Bridgewater Canal Towpath and close to Cornbrook Metrolink station. Moho is a popular award winning development with well designed apartments which maximise space with sliding doors, built in wardrobes and floor to ceiling windows. It also offers a landscaped communal courtyard for its residents. The apartment is currently tenanted until March 2026 @ £1000pcm and would be an excellent opportunity for investors. It also includes a secure underground parking space. EPC rating (C) Council tax band (B)

Lease: 999 years from 2003



- Award-Winning Urban Splash Development
- Third Floor Position
- Floor to Ceiling Windows
- Secure Underground Parking Space Included
- Being sold via 'Secure Sale'
- Popular Castlefield Location
- Full Length Balcony
- Communal Landscaped Garden
- EWS1 Form with A1 Rating
- Short Walk from Manchester City Centre & Transport Links