



WATERFORD ROAD

London SW6



FAMILY HOME IN THE SOUGHT AFTER MOORE PARK ESTATE

An incredible high specification four bedroom home with cutting edge design and a south west facing garden situated in the sought after Moore Park Estate on the Chelsea border.

   EPC
4 4 3 C

Local Authority: London Borough of Hammersmith and Fulham

Council Tax band: H

Tenure: Freehold

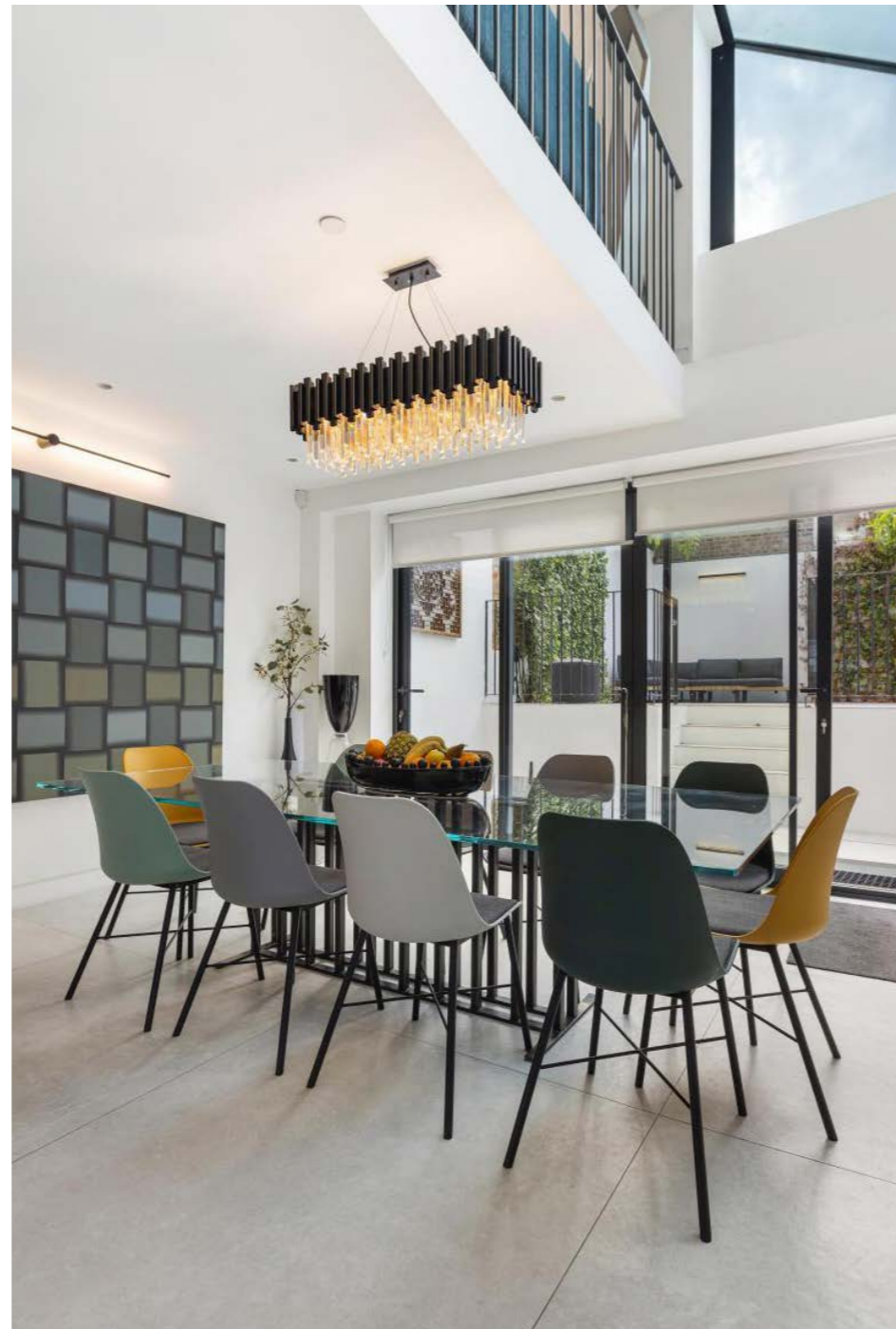
Guide price: £3,495,000



FLOODED WITH NATURAL LIGHT THROUGH OUT

The ground floor comprises a spacious reception room with a separate home office and an impressive double height void providing a flood of natural light to both the ground and lower ground.

To the front of the property is a storage space that is ideal for bikes with an electric door for security.





HIGH SPECIFICATION FINISH THROUGH OUT

The lower ground offers a fabulous open plan kitchen/dining room fitted with an array of contemporary units, a central island, integrated appliances and doors leading to the landscaped sunny aspect garden.

The basement has been designed perfectly for guests or a live in nanny with a media room, bedroom, en suite and utility room.





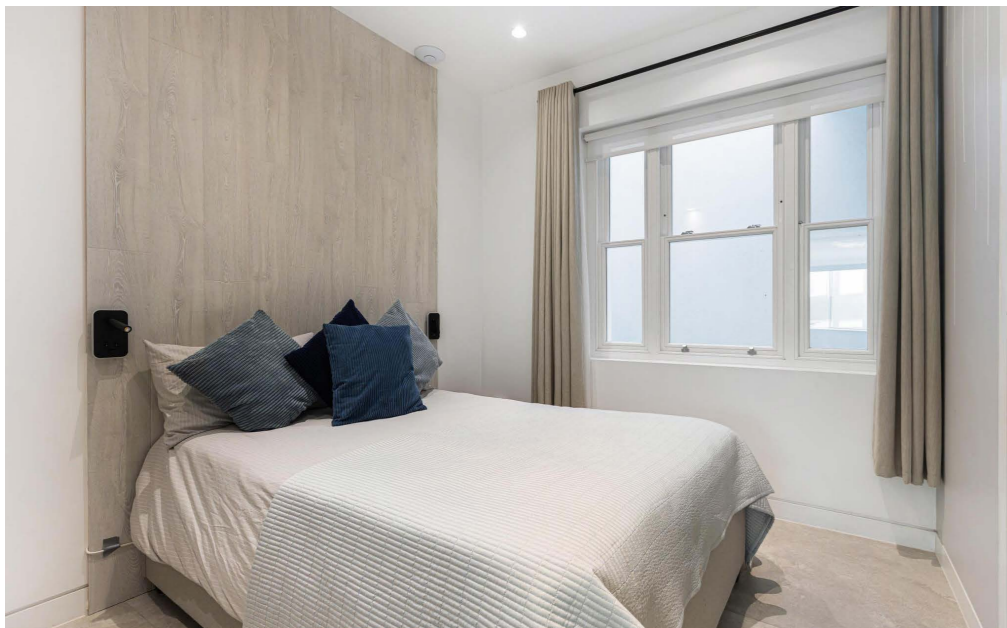
PRINCIPAL SUITE WITH DRESSING AREA AND BALCONY

There are a further three bedrooms on the first and second floors with en suites serving each room and a dressing room to the main bedroom. In addition there is a second laundry room.

Please note; this property has the added benefit of a control 4 system making it easy to control lights, TVs and sound system. There is also air conditioning to the bedrooms and solar panels that heat the heating and hot water.

Please note, we have not yet received confirmation from the client regarding certain information for this property. You should ensure you make your own enquiries regarding material information about this property.





CONVENIENTLY LOCATED CLOSE TO AMENITIES

Waterford Road runs between Fulham Road and New Kings Road, conveniently located for the many shops, restaurants, bars and coffee houses of Parsons Green and Fulham Broadway.

The closest underground station is Fulham Broadway (District Line) and open green spaces of Eel Brook Common and Parson Green are also nearby.





This plan is for layout guidance only. Not drawn to scale unless stated. Windows and door openings are approximate. Whilst every care is taken in the preparation of this plan, please check all dimensions, shapes and compass bearings before making any decisions reliant upon them. (ID767266)

We would be delighted
to tell you more.

Arabella Howard-Evans

+44 20 7751 2402

arabella.howardevans@knightfrank.com

Knight Frank Fulham

203 New Kings Road

Fulham SW6 4SR

[knightfrank.co.uk](https://www.knightfrank.co.uk)

Your partners in property

1. Particulars: These particulars are not an offer or contract, nor part of one. You should not rely on statements given by Knight Frank in the particulars, by word of mouth or in writing ("information") as being factually accurate about the property, its condition or its value. Neither Knight Frank nor any joint agent has any authority to make any representations about the property, and accordingly any information given is entirely without responsibility on the part of Knight Frank. 2. Material Information: Please note that the material information is provided to Knight Frank by third parties and is provided here as a guide only. While Knight Frank has taken steps to verify this information, we advise you to confirm the details of any such material information prior to any offer being submitted. If we are informed of changes to this information by the seller or another third party, we will use reasonable endeavours to update this as soon as practical. 3. Photos, Videos etc: The photographs, property videos and virtual viewings etc. show only certain parts of the property as they appeared at the time they were taken. Areas, measurements and distances given are approximate only. 4. Regulations etc: Any reference to alterations to, or use of, any part of the property does not mean that any necessary planning, building regulations or other consent has been obtained. A buyer must find out by inspection or in other ways that these matters have been properly dealt with and that all information is correct. 5. Fixtures and fittings: A list of the fitted carpets, curtains, light fittings and other items fixed to the property which are included in the sale (or may be available by separate negotiation) will be provided by the Seller's Solicitors. 6. VAT: The VAT position relating to the property may change without notice. 7. To find out how we process Personal Data, please refer to our Group Privacy Statement and other notices at <https://www.knightfrank.com/legals/privacy-statement>.

Particulars dated May 2025. Photographs and videos dated May 2025. All information is correct at the time of going to print. Knight Frank is the trading name of Knight Frank LLP. Knight Frank LLP is a limited liability partnership registered in England and Wales with registered number OC305934. Our registered office is at 55 Baker Street, London W1U 8AN. We use the term 'partner' to refer to a member of Knight Frank LLP, or an employee or consultant. A list of members names of Knight Frank LLP may be inspected at our registered office. If you do not want us to contact you further about our services then please contact us by either calling 020 3544 0692, email to marketing.help@knightfrank.com or post to our UK Residential Marketing Manager at our registered office (above) providing your name and address.