



## GLENTWORTH STREET, NW1

£2,250,000

Four double bedrooms  
Two reception rooms  
Share of freehold  
First floor (with lift)  
Porter  
Baker street station

@marshandparsons  
marshandparsons.co.uk

MARSH &  
PARSONS

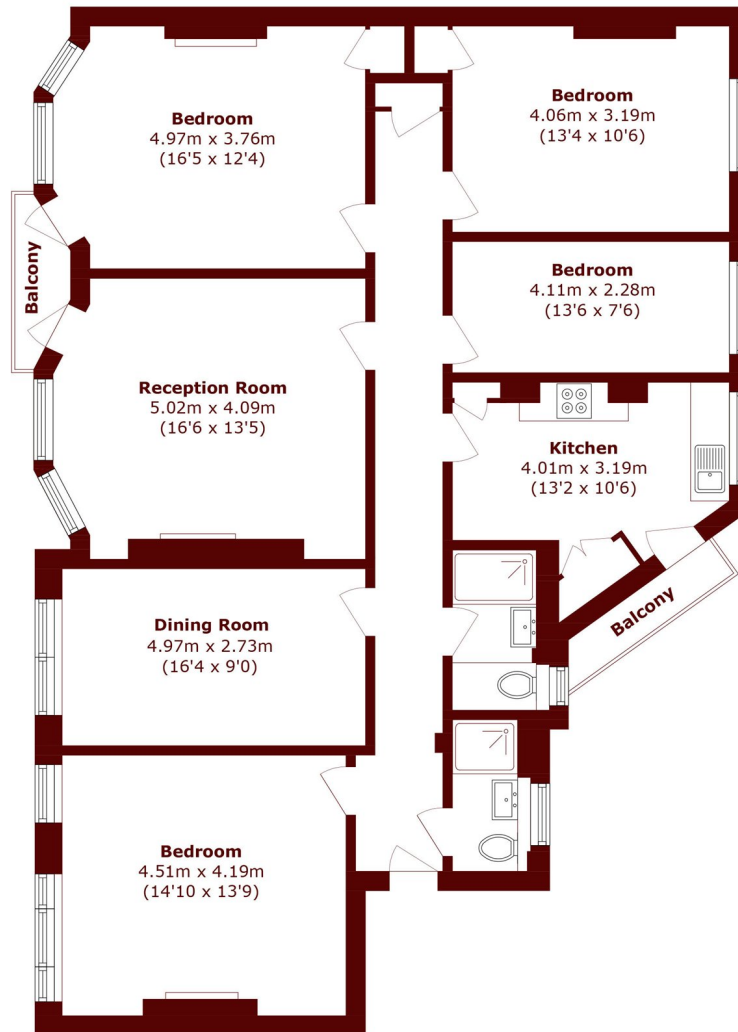


# ABOUT THE PROPERTY

Set on the first floor of the highly sought-after Clarence Gate Gardens in the heart of Marylebone, this meticulously finished four-bedroom, two-bathroom apartment offers an exceptional blend of elegance, space, and modern comfort. The property boasts two well proportioned reception rooms with abundant natural light. Every detail has been carefully considered, featuring high-quality finishes that create both a stylish and functional home. The spacious principal bedroom is complemented by three further well-appointed bedrooms. Two contemporary bathrooms finished to an impeccable standard. Situated within a well-maintained building, this outstanding home presents a rare opportunity to acquire a beautifully finished, generously proportioned apartment.



# STEP INSIDE GLENTWORTH STREET



## First Floor

Total area (approx.): 134.2 sq. m (1444.5 sq. ft)

Balcony area (approx.): 4.8 sq. m (51.6 sq. ft)

Marylebone & Mayfair  
020 7935 1775

Energy Rating: D We aim to make our particulars both accurate and reliable. However, they are not guaranteed; nor do they form part of an offer or contract. If you require clarification on any points then please contact us, especially if you're traveling some distance to view. Please note that appliances and heating systems have not been tested and therefore no warranties can be given as to their good working order

MARSH &  
PARSONS