



Sheringham

St. John's Wood Park, NW8

Asking Price £960,000

Sole Agent. A well-presented and spacious 2-bedroom, 2-bathroom apartment set within this sought after development on the east side of St John's Wood.

The apartment is located on the 8th floor (with lift) and offers far reaching views and a small balcony.

Sheringham forms part of the exclusive 'Queensmead Estate' which is a high quality development surrounded by attractive communal gardens. The development is noted for its excellent portorage, high levels of security and residents off street parking facilities.

CHESTERTONS



Sheringham

St. John's Wood Park, NW8

- 2 Bedroom, 2 Bathroom Apartment
- Long Leasehold
- 876 sq. ft.
- Balcony
- Porter
- Parking (subject to availability)



Tenure: Leasehold
Service Charge: £12,210pa
Ground Rent: £0
Local Authority: Camden
Council Tax Band: G

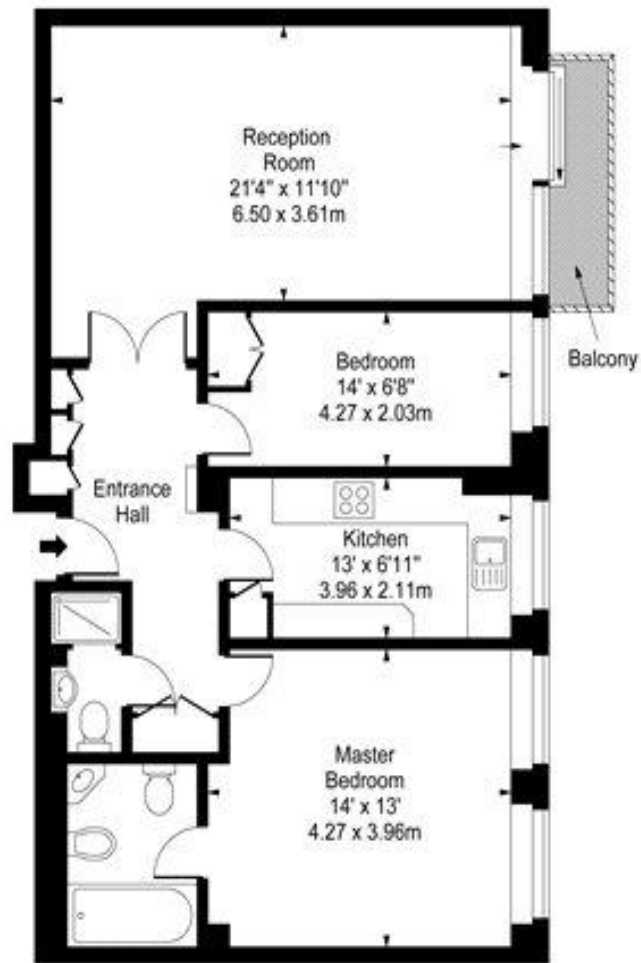
Energy Efficiency Rating		Current	Potential
Very energy efficient - lower running costs			
(92-100)	A		
(81-91)	B		83
(69-80)	C		
(55-68)	D	68	
(39-54)	E		
(21-38)	F		
(1-20)	G		
Not energy efficient - higher running costs			
England, Scotland & Wales		EU Directive 2002/91/EC	

Chestertons St John's Wood Sales

105 St. John's Wood Terrace
London
NW8 6PL
stjohnswood@chestertons.co.uk
020 3040 8611
chestertons.co.uk



**Sheringham,
St. John's Wood Park, NW8**



Eighth Floor

Approx Gross Internal Area **876 Sq Ft - 81.38 Sq M**

For Illustration Purposes Only - Not To Scale

www.goldlens.co.uk

Produced for Chestertons

Ref. No. 001077

