



## St. Anns Terrace, NW8

£600,000

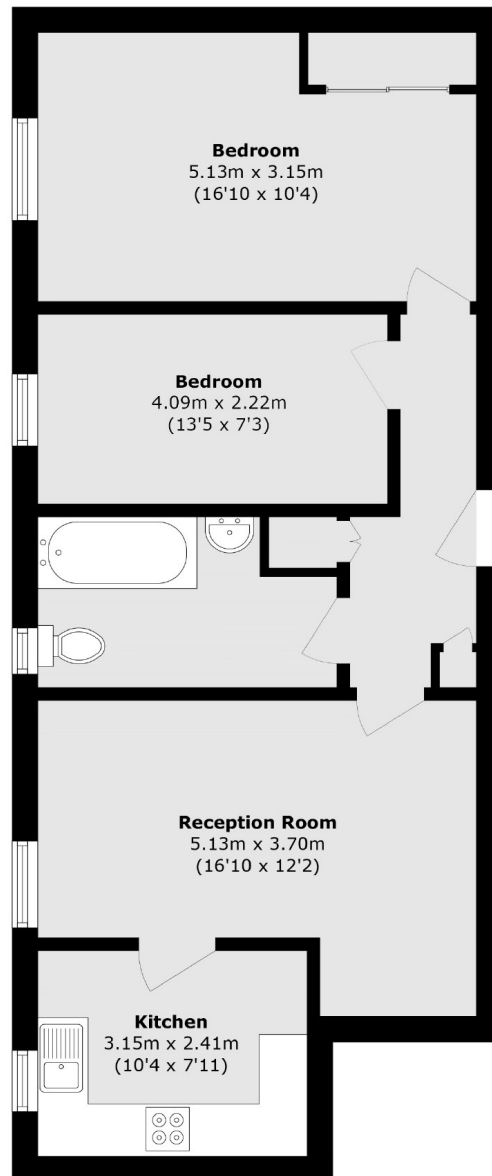
A spacious two bedroom apartment on the second floor in a purpose built block next to St John's Wood High Street. Bright reception room with wood floors, separate kitchen, two double bedrooms and family bathroom with shower over bath.

Portland House is conveniently situated at the North West end of St John's Wood High Street which offers a range of shops, restaurants, cafés and bars and St John's Wood underground station is within 200 metres.

### Features

- Two Double Bedrooms
- Second Floor Apartment
- Lift
- Wood Floors In Reception
- Separate Kitchen
- Chain Free

# St. Anns Terrace, London, NW8



Total area (approx.): 64.2 sq. m (691.0 sq. ft)