



## Southview Gardens, Worthing, BN11 5JA

Asking Price £750,000

A substantial and beautifully extended detached home offering exceptionally versatile accommodation arranged over three floors. With six bedrooms, two reception rooms and three bathrooms, this impressive property provides generous space ideal for growing families or multi-generational living.

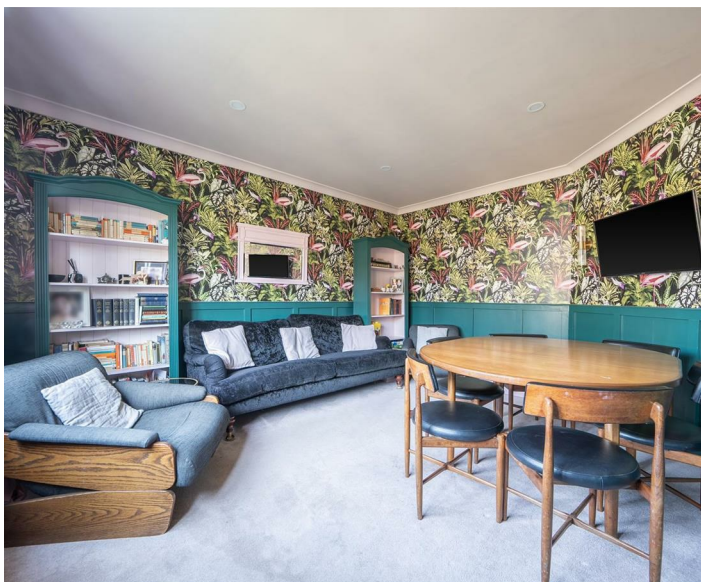
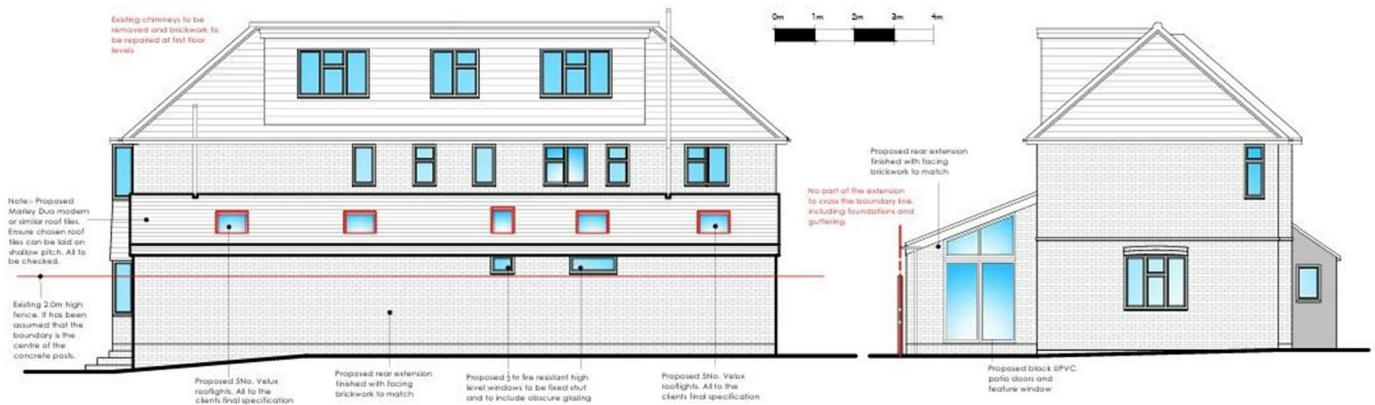
The ground floor features a welcoming entrance hall, two spacious reception rooms including a bright living room with south facing bay window, a well appointed kitchen with ample storage, ground floor WC and a useful utility room. The layout offers excellent flexibility for both everyday family life and entertaining.

Across the upper floors are six well proportioned bedrooms, including two with en suite shower rooms. One of the top floor rooms also benefits from a kitchenette, creating excellent potential for a self contained

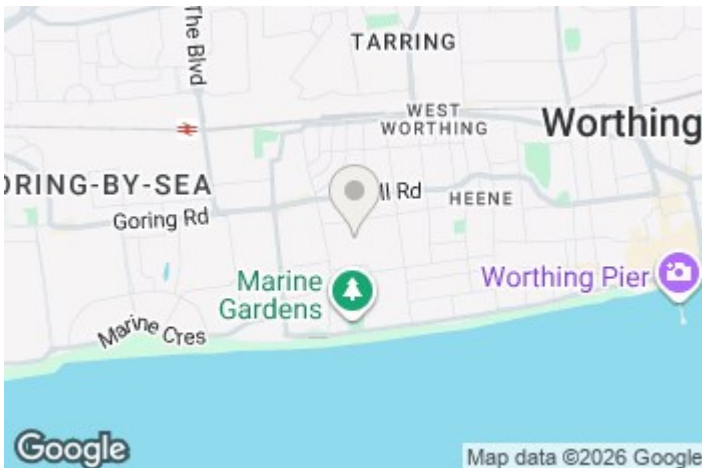
- Substantial extended detached family residence
- Two reception rooms with bright living space
- Planning granted for single story extension - reference AWDM/1645/24
- Wrap-around garden with patio and lawn
- Potential self contained guest suite
- Six generous bedrooms across three floors
- Family bathroom and two en suites
- Utility room and ground floor WC
- Garage and additional off-road parking
- Planning approved for further extension



PROPOSED SOUTH ELEVATION 1:100 PROPOSED WEST ELEVATION 1:100



Worthing, a picturesque seaside town on the south coast of England, exudes a unique charm with its blend of Victorian elegance and contemporary vitality. Known for its extensive pebble beach, historic pier, and well-maintained promenade, Worthing offers residents and visitors alike a captivating coastal experience. With its beautiful parks, such as Beach House Park and Highdown Gardens, Worthing provides green spaces for leisure and relaxation.



EPC Rating:  
E

| Energy Efficiency Rating                    |   | Current                 | Potential |
|---|---|-------------------------|-----------|
| Very energy efficient - lower running costs |   |                         |           |
| (92 plus)                                   | A |                         |           |
| (81-91)                                     | B |                         |           |
| (69-80)                                     | C |                         |           |
| (55-68)                                     | D |                         |           |
| (39-54)                                     | E | 54                      | 64        |
| (21-38)                                     | F |                         |           |
| (1-20)                                      | G |                         |           |
| Not energy efficient - higher running costs |   |                         |           |
| England & Wales                             |   | EU Directive 2002/91/EC |           |

## Southview Gardens, Worthing, BN11

Approximate Area = 2060 sq ft / 191.3 sq m

Limited Use Area(s) = 163 sq ft / 15.1 sq m

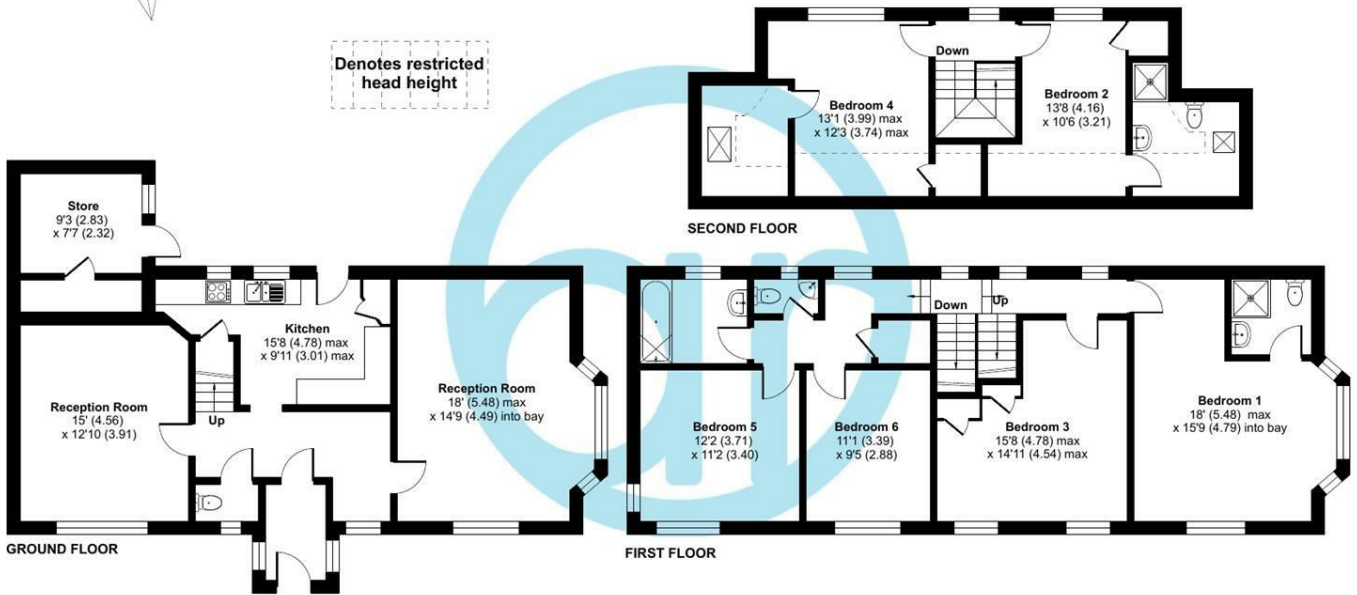
Outbuilding = 98 sq ft / 9.1 sq m

Total = 2321 sq ft / 215.5 sq m

For identification only - Not to scale



Denotes restricted head height



Floor plan produced in accordance with RICS Property Measurement Standards incorporating International Property Measurement Standards (IPMS2 Residential). © nitchecom 2026. Produced for Aspire Residential Real Estate. REF: 1430967

### Aspire Residential | Goring-by-Sea

28 Goring Road  
Goring-by-Sea  
Worthing  
BN12 4AD  
Telephone: 01903 259 961  
Email: [info@aspireresidential.co.uk](mailto:info@aspireresidential.co.uk)



### Aspire Residential | Durrington / Salvington

5 Selden Parade  
Salvington Road  
Worthing  
BN13 2HL  
Telephone: 01903 910 424  
Email: [enquiries@aspireresidential.co.uk](mailto:enquiries@aspireresidential.co.uk)

Aspire Residential and Aspire Residential Estate Agents are trading names of Aspire Residential Sales Limited, a Company registered in England and Wales with registration number 11659289. VAT No. 317450614

**IMPORTANT NOTICE TO PURCHASERS:** We endeavour to make our sales particulars accurate and reliable, however, they do not constitute or form part of an offer or any contract and none is to be relied upon as statements of representation or fact. The services, systems and appliances listed in this specification have not been tested by us and no guarantees as to their operating ability or efficiency are given. All measurements have been taken as a guide to prospective buyers only, and are not precise. If you require clarification or further information on any points, please contact us, especially if you are traveling some distance to view.