



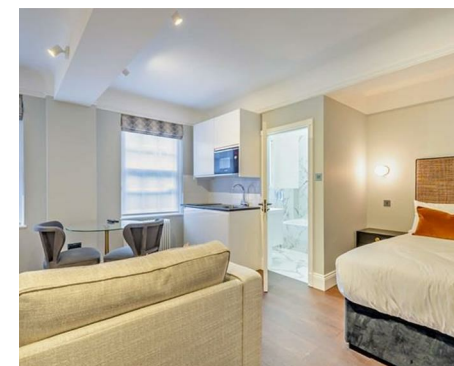
Let **UK** Home

1 Bedrooms

Flat - Studio

Located in London

**£2,383 Per Month**



[info@letukhome.co.uk](mailto:info@letukhome.co.uk)

<https://www.letukhome.co.uk/>

01795 358 886



# 145 Fulham Road London

SW3 6SH



Let UK Home are excited to offer a beautiful, interior-designed studio apartment located in the heart of Chelsea.

Nestled in the vibrant heart of Chelsea, this exquisite studio apartment at 145 Fulham Road presents a rare opportunity for those seeking a stylish and comfortable living space. This beautifully designed ground-floor flat boasts a bright and airy atmosphere, with large windows that offer delightful views of the serene green space of Pelham Court.

The studio has been recently redecorated and furnished to an exceptionally high standard, ensuring a modern and inviting environment. With one reception room, one bedroom, and a well-appointed bathroom, this property is ideal for individuals or couples looking for a chic pied-à-terre in one of London's most sought-after areas.

Located in the highly sought-after Brompton Cross area, these Chelsea apartments are minutes away from South Kensington underground station (served by the Piccadilly, District and Circle lines) and within walking distance of Sloane Square underground station.

Also minutes away on the corner of Fulham Road is Sloane Avenue, a major thoroughfare from South Kensington to Sloane Square and home to a number of well-stocked supermarkets and other amenities.

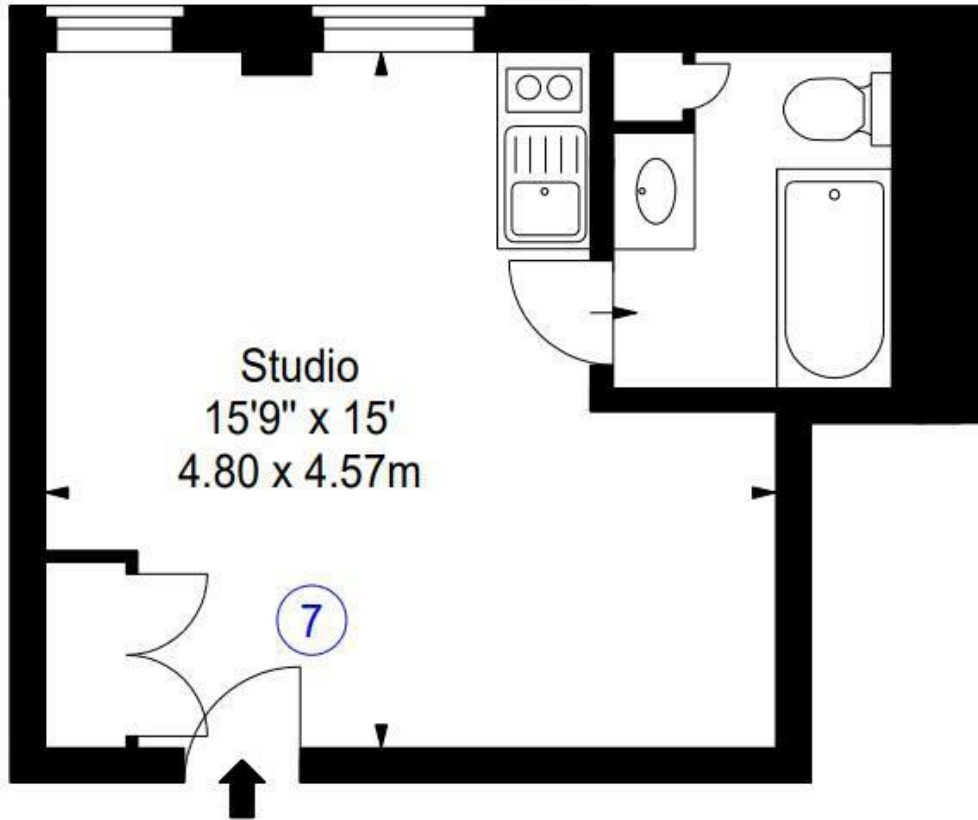
The flexibility of the rental options allows you to choose between furnished or unfurnished, catering to your personal preferences and lifestyle. Whether you are a

# 145 Fulham Road London

£2,383 Per Month

- Lower Ground Floor
- Interior designed
- Available furnished or unfurnished
- Onsite caretaker
- EPC Rating: C
- Stunning Studio
- Moments from South Kensington tube
- Lifts
- Fully furnished





Let **UK** Home

3F 2 Eastbourne Terrace  
 Paddington  
 London  
 W2 6LG

01795 358 886

info@letukhome.co.uk

**Council Tax Band: D**

**Local Authority:**

Agents Note: Whilst every care has been taken to prepare these particulars, they are for guidance purposes only. All measurements are approximate and are for general guidance purposes only and whilst every care has been taken to ensure their accuracy, they should not be relied upon and potential buyers/tenants are advised to recheck the measurements.

Energy Efficiency Rating		Current	Potential
Very energy efficient - lower running costs			
(92 plus) <b>A</b>			
(81-91) <b>B</b>			
(69-80) <b>C</b>			
(55-68) <b>D</b>		71	76
(39-54) <b>E</b>			
(21-38) <b>F</b>			
(1-20) <b>G</b>			
Not energy efficient - higher running costs			
<b>England &amp; Wales</b>	EU Directive 2002/91/EC		

<https://www.letukhome.co.uk/>