

RIVERHOMES

Waldeck Road
Chiswick W4

£4,750 per month
Unfurnished



Waldeck Road Chiswick W4

Set across three floors, this four bedroom period home enjoys a special riverside position in Chiswick, with a peaceful outlook and the River Thames close by. The ground floor is designed for modern living, with a spacious open-plan kitchen, dining and living area creating a sociable heart to the home. Large glazed doors open directly onto the private garden, allowing natural light to flood the space and creating a seamless connection between indoors and out. A guest toilet is conveniently positioned beneath the stairs. The first floor provides two well-proportioned

bedrooms alongside a family bathroom while the second floor offers two further bedrooms, providing flexible accommodation for families, guests or those needing a dedicated workspace. Perfectly placed for enjoying the riverside lifestyle, the property is within easy reach of Chiswick High Road, Turnham Green and a wealth of local cafés, restaurants, green spaces and independent shops. Excellent transport links and highly regarded schools are also nearby, making this an ideal home for those seeking a quieter setting without compromising on connectivity.

KEY FEATURES

4 bedrooms

1 bathroom

1 guest toilet

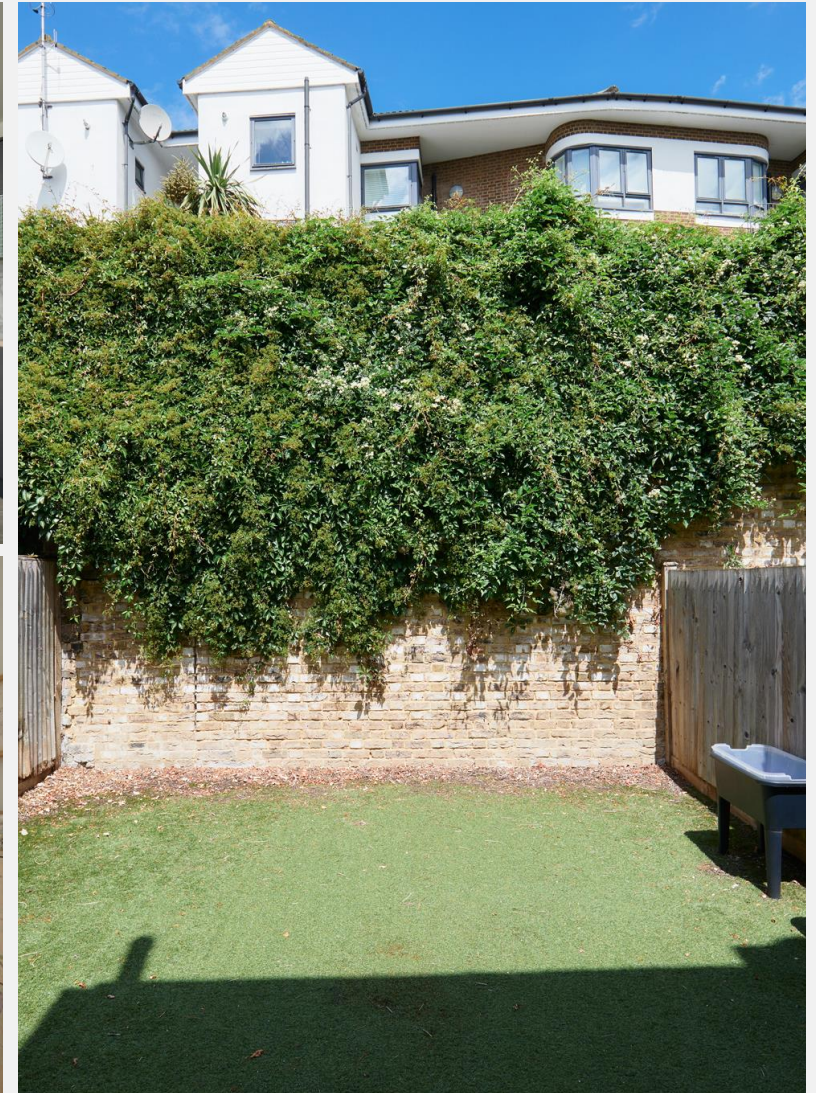
Spacious dining / living area with direct access to private garden

Guest toilet on the ground floor

Excellent transport links via Kew Bridge and Gunnersbury Stations

Located ideally for access to local parks, cafés and schools of the area

Available from August 2026



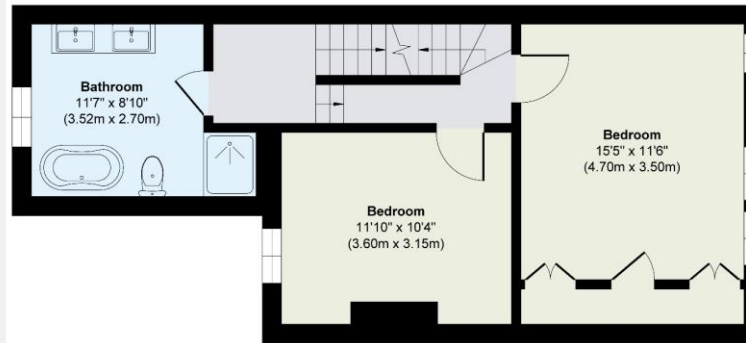


ENERGY PERFORMANCE CERTIFICATE

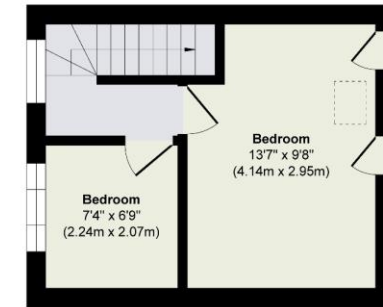
Score	Energy rating	Current	Potential
92+	A		
81-91	B		82 B
69-80	C	72 C	
55-68	D		
39-54	E		
21-38	F		
1-20	G		

KEY INFORMATION

Local authority:	London Borough of Hounslow
Council tax band:	F - £3,156.92 per annum approx.
Internal area:	1,279 sq. ft. / 118.98 sq. m.
No. of bedrooms:	4
Available from:	August 2026



First Floor
Approximate Floor Area
480 sq. ft
(44.65 sq. m)



Second Floor
Approximate Floor Area
230 sq. ft
(21.40 sq. m)

