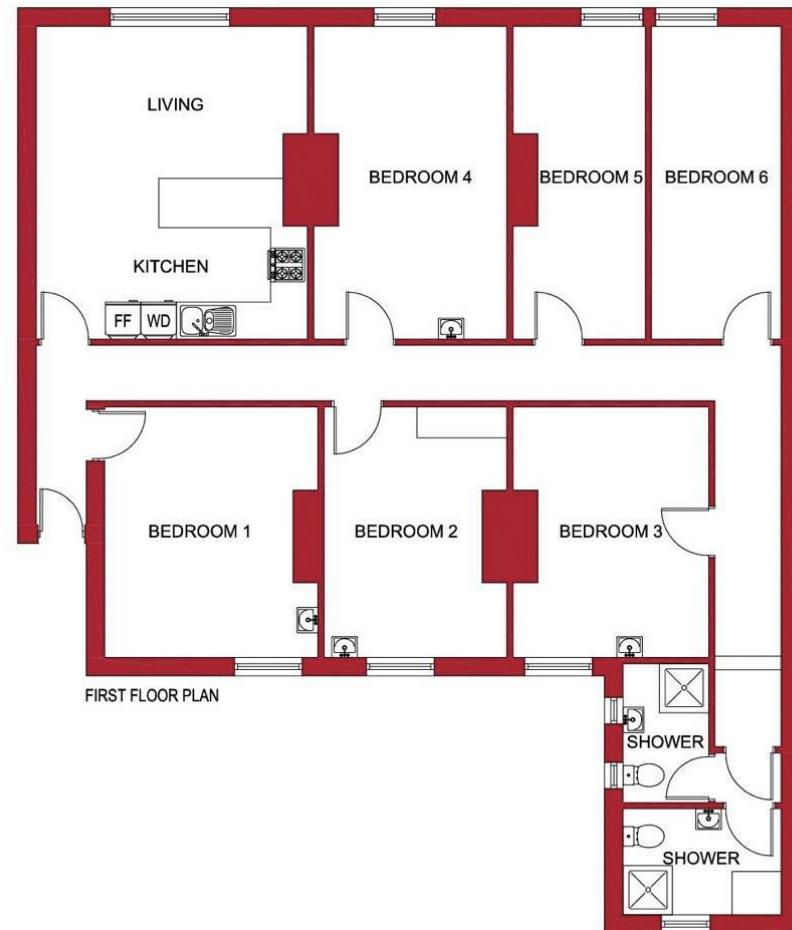




**Viewings**  
 Viewings by arrangement only.  
 Call 0114 2666300 to make an appointment.

**Vendors Comments**  
 Add text here

Energy Efficiency Rating		Current	Potential
Very energy efficient - lower running costs			
(92 plus) <b>A</b>			
(81-91) <b>B</b>			
(69-80) <b>C</b>		71	77
(55-68) <b>D</b>			
(39-54) <b>E</b>			
(21-38) <b>F</b>			
(1-20) <b>G</b>			
Not energy efficient - higher running costs			
<b>England &amp; Wales</b>		EU Directive 2002/91/EC	



**Room 3, 294A Ecclesall Road, Sheffield, S11 8PE**

**£503 Per month**

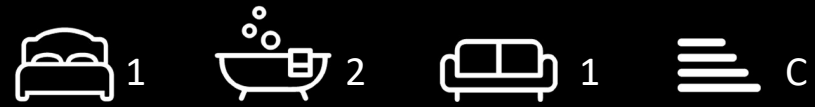
- £125 per week to include all bills
- Large double room available
- Excellent location on Ecclesall Road
- Ideal for students studying at Sheffield Hallam University
- EPC Grade C
- STUDENT property available from 1st July 2026
- Shared six bedroom property
- Close to an abundance of local amenities
- Two bathrooms

# Room 3, 294A Ecclesall Road, Sheffield S11 8PE

\*\*\* STUDENT \*\*\* £125 PER WEEK, TO INCLUDE ALL BILLS \*\*\*

LARGE DOUBLE BEDROOM in a SHARED, six bedroom property available to STUDENTS, with TWO BATHROOMS. A VERY WELL LOCATED, six bedroom APARTMENT close to an abundance of local amenities and situated in the HIGHLY SOUGHT AFTER location off ECCLESALL ROAD.

In brief the accommodation comprises: open plan lounge / kitchen, large double bedroom and two bathrooms. An early viewing is highly recommended to avoid disappointment!  
EPC Grade C.



Council Tax Band: B

