



Connells

Beacon View Salisbury Road
Shaftesbury

Beacon View Salisbury Road Shaftesbury SP7 8BS

for sale
£335,000



Property Description

A five bedroom family home set over three floors with lounge and kitchen/diner on the ground floor offering spacious living space. On the further two floor are five bedrooms with ensuite to the master bedroom and a family bathroom. Outside the garden is laid to patio and gravel for ease of maintenance with flower beds. There are two garages with the property.

Entrance Hall

Door to the front.

Cloakroom

WC and a wash hand basin.

Lounge

Double glazed window to the front, double glazed french doors to the rear and a radiator.

Kitchen / Diner

Two double glazed windows to the front, double glazed french doors onto the garden, fitted kitchen with wall and base units, integrated electric oven and gas hobs, belfast sink, integrated dishwasher and plumbing for a washing machine.

Garden

The garden is laid to ease of maintenance with patio and gravel areas and flower beds. Access to one of the garages from the garden.

Garages

There are two garages with the property.

First Floor

Bedroom Three

Double glazed window to the front and two radiators.

Bedroom Four

Double glazed window to the rear and a radiator.

Bedroom Five

Double glazed window to the rear and a radiator.

Bathroom

Double glazed window to the front, bath, WC and a wash hand basin.

Second Floor

Bedroom One

Double glazed windows to the front and rear, built in wardrobe, two radiators and door to the ensuite

Ensuite

Double glazed window to the front, shower, WC, wash hand basin and a radiator.

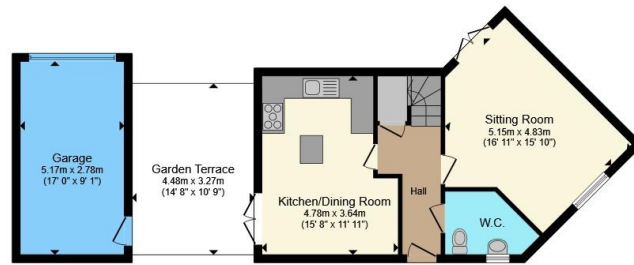
Bedroom Two

Double glazed windows to the front and rear and two radiators.





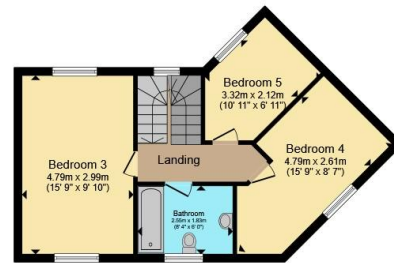




Ground Floor



Second Floor



First Floor

Total floor area 145.2 m² (1,563 sq.ft.) approx

This floor plan is for illustrative purposes only. It is not drawn to scale. Any measurements, floor areas (including any total floor area), openings and orientation are approximate. No details are guaranteed, they cannot be relied upon for any purpose and they do not form part of any agreement. No liability is taken for any error, omission or misstatement. A party must rely upon its own inspection(s). Powered by www.propertybox.io

Connells

To view this property please contact Connells on

T 01747 854 001
E shaftesbury@connells.co.uk

34 High Street
SHAFTESBURY SP7 8JG

EPC Rating: B Council Tax
Band: D

Tenure: Freehold

view this property online connells.co.uk/Property/SFT306145



1. MONEY LAUNDERING REGULATIONS Intending purchasers will be asked to produce identification documentation at a later stage and we would ask for your co-operation in order that there will be no delay in agreeing the sale. 2. These particulars do not constitute part or all of an offer or contract. 3. The measurements indicated are supplied for guidance only and as such must be considered incorrect. Potential buyers are advised to recheck measurements before committing to any expense. 4. We have not tested any apparatus, equipment, fixtures, fittings or services and it is in the buyers interest to check the working condition of any appliances.

Connells Residential is registered in England and Wales under company number 1489613, Registered Office is Cumbria House, 16-20 Hockliffe Street, Leighton Buzzard, Bedfordshire, LU7 1GN. VAT Registration Number is 500 2481 05.

See all our properties at www.connells.co.uk | www.rightmove.co.uk | www.zoopla.co.uk

Property Ref: SFT306145 - 0006