



Aromamettshyuroline
Pure joy with a twist
Choose your favourite scent or
Seasonal gifts and starter packs
Call in, ring or text
0345 420779

jordan fishwick

329 Brantingham Road, Chorlton, M21 0GU
Guide Price £550,000



**329 Brantingham Road,
Chorlton, Manchester,
M21 0GU**

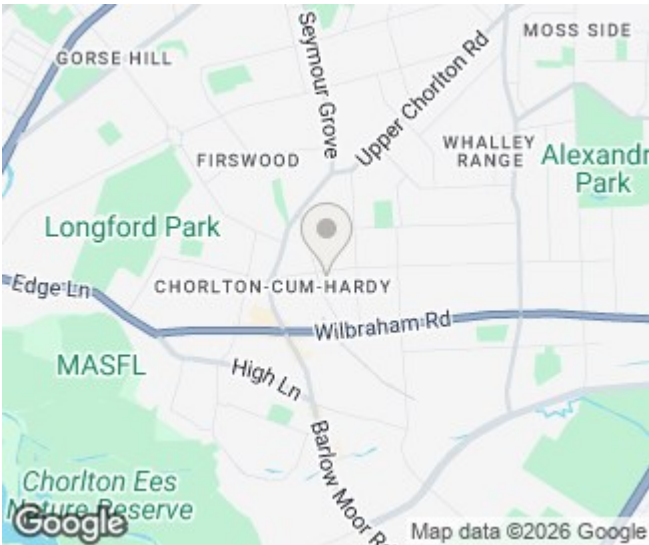
Guide Price £550,000



The Property

A superbly presented and EXTENDED THREE DOUBLE BEDROOM SEMI DETACHED 1930S PROPERTY located on a well regarded TREE-LINED ROAD only a short stroll from Chorlton Village. This delightful property benefits from both a DRIVEWAY AND DETACHED GARAGE providing off road parking as well as an approximately 80FT SOUTH FACING GARDEN and will prove ideal for a couple or family. The property provides spacious and light accommodation throughout and is ideally placed for all local amenities and transport links including the Metrolink. The superb accommodation briefly comprises: covered porch, entrance hallway, lounge with LOG BURNING STOVE and feature exposed brick chimney breast, spacious OPEN PLAN LIVING/DINING/KITCHEN with modern shaker style units, twin Velux skylight windows and French patio doors opening to the landscaped rear garden, cloakroom / wc. To the first floor there are three good sized bedrooms, the main boasting full height fitted wardrobes and bathroom fitted with a modern three piece suite. Both double glazing and gas central heating have been installed throughout. Externally to the front of the property is a gated driveway which extends to the side leading to the detached garage. To the rear a large fenced and enclosed garden which enjoys a sunny southerly aspect has been mainly laid to lawn and features an Indian sandstone patio area as well as well stocked beds. An internal viewing is most highly recommended.

- Superbly presented semi detached 1930s property
- Approx. 80ft South facing garden
- Three double bedrooms
- Well regarded tree lined road
- Walking distance from Chorlton Village, all local amenities and the Metro
- Driveway and detached garage providing off road parking
- Move-in ready condition
- Spacious open plan living/dining/kitchen
- Ideal for a couple or family
- Council Tax: C. EPC: C



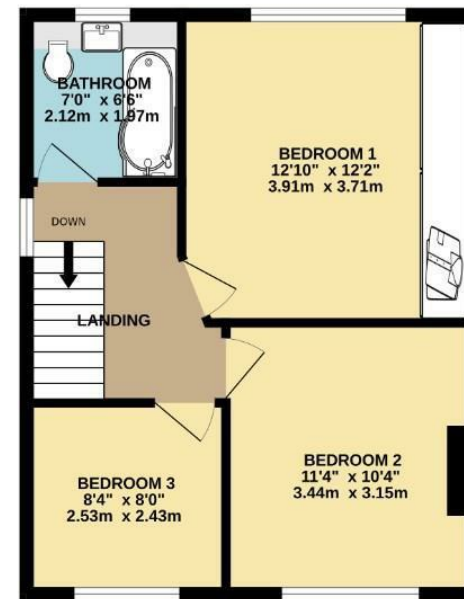
Energy Efficiency Rating		
	Current	Potential
Very energy efficient - lower running costs		
(92 plus) A		
(81-91) B		
(69-80) C	70	76
(55-68) D		
(39-54) E		
(21-38) F		
(1-20) G		
Not energy efficient - higher running costs		
England & Wales	EU Directive 2002/91/EC	



GROUND FLOOR
630 sq.ft. (58.5 sq.m.) approx.



1ST FLOOR
450 sq.ft. (41.8 sq.m.) approx.



TOTAL FLOOR AREA : 1080 sq.ft. (100.3 sq.m.) approx.
Measurements are approximate. Not to scale. Illustrative purposes only
Made with Metropix ©2025



These particulars are believed to be accurate but they are not guaranteed and do not form a contract. Neither Jordan Fishwick nor the vendor or lessor accept any responsibility in respect of these particulars, which are not intended to be statements or representations of fact and any intending purchaser or lessee must satisfy himself by inspection or otherwise as to the correctness of each of the statements contained in these particulars. Any floorplans on this brochure are for illustrative purposes only and are not necessarily to scale.

Offices at: Chorlton, Didsbury, Disley, Hale, Glossop, Macclesfield, Manchester Deansgate, Manchester Whitworth Street, New Mills, Sale, Wilmslow and Withington