



5 Venneit Close, Roger Dudman Way, Oxford, OX1 1HZ

Property Type: Three-bedroom furnished apartment.

Location: Venneit Close, OX1, with excellent access to Oxford City Centre, the train station, and Port Meadow.

Key Features:

Availability: Available for the 2026/27 academic year.

Bedrooms: Three spacious furnished bedrooms including beds, mattresses, storage, desks, and chairs.

Bathrooms: Two well-maintained bathrooms.

Living Area: Comfortable communal living space ideal for relaxing and socialising.

Kitchen: Fully equipped kitchen with modern appliances.

Outdoor Space: Large communal garden offering peaceful outdoor space.

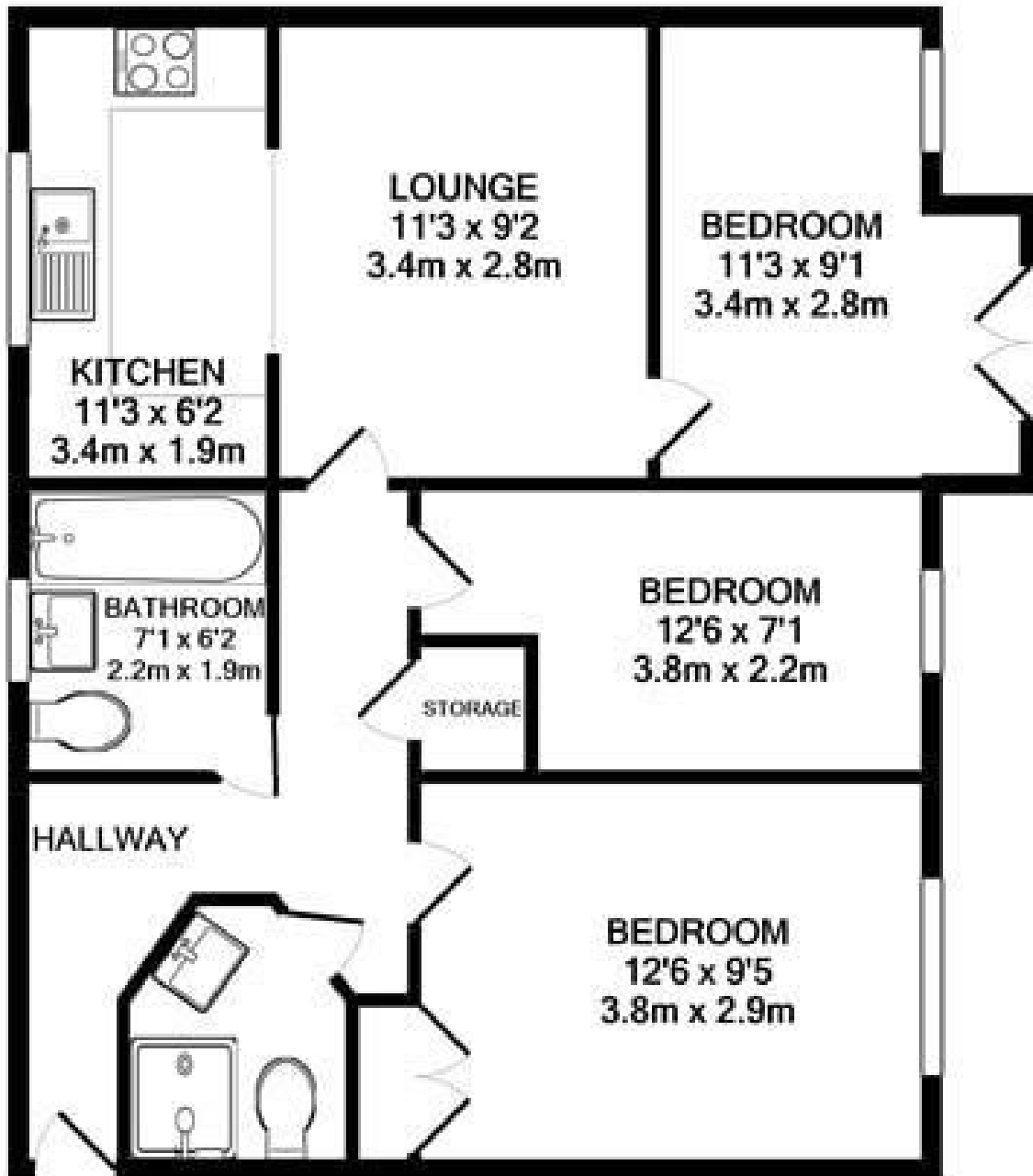
Storage: Secure bike storage available.

Occupancy: Ideal for three students or professional sharers.

This well-presented three-bedroom property in Venneit Close offers spacious and comfortable accommodation in a highly convenient OX1 location. Perfectly suited to students or professional sharers, the property benefits from

- Oxford City Centre
- 1 Receptions
- 2 Bathrooms
- 3 Bedrooms
- Furnished Property
- Flat
- FITTED KITCH
- SHOWER
- ENTRYPHONE
- GCH

£2,400 PCM



TOTAL APPROX. FLOOR AREA 627 SQ.FT. (58.2 SQ.M.)
 Made with Metropix ©2020

Energy Efficiency Rating		Current	Potential
Very energy efficient - lower running costs			
(92 plus) A			
(81-91) B			
(69-80) C		76	76
(55-68) D			
(39-54) E			
(21-38) F			
(1-20) G			
Not energy efficient - higher running costs			
England & Wales		EU Directive 2002/91/EC	

Environmental Impact (CO ₂) Rating		Current	Potential
Very environmentally friendly - lower CO ₂ emissions			
(92 plus) A			
(81-91) B			
(69-80) C		77	78
(55-68) D			
(39-54) E			
(21-38) F			
(1-20) G			
Not environmentally friendly - higher CO ₂ emissions			
England & Wales		EU Directive 2002/91/EC	