



Garden House, Kensington Gardens Square,
Bayswater, W2

£1,350 Per Week,

NAPIER WATT

T: 0207 935 0011
E: enquiries@napierwatt.co.uk
W: napierwatt.co.uk

35 Berkeley Square, Mayfair, London, W1J 5BF







Description

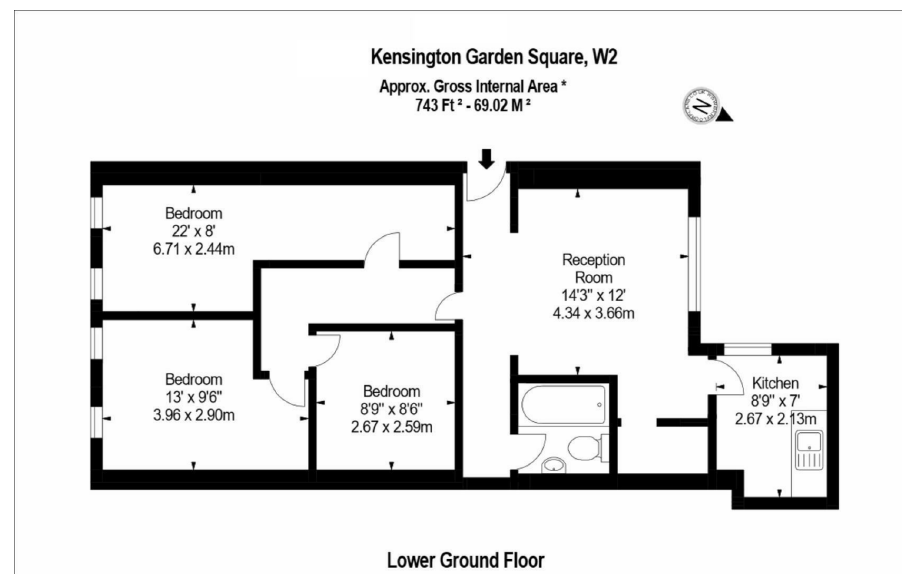
This superbly refurbished two bedroom two bathroom apartment (768 sq ft) within this stunning Grade II listed building with access to beautiful communal gardens. The apartment has been interior designed and finished to the highest of standards with high end modern finishes whilst retaining its original Grade II listed features from the original building. The apartment comprises splendid bedrooms with built in custom wardrobes one with en-suite bathroom, a luxurious reception room with bespoke furniture leading onto its own the private patio, an exquisite polished marble bathroom and a fully fitted bespoke Miele kitchen. The apartment has access to the stunning communal gardens which is one of London's few remaining traditional Garden squares. The building hosts 24 hour security, lift service, unique private access to Kensington Garden Square gardens and an emergency out of hour's maintenance service. Garden House is located in a quiet residential part of W2 and close to the amenities of Westbourne Grove, Notting Hill and the beautiful Hyde Park including Whitley shopping mall. It is also perfectly located for easy access to transport links with Bayswater and Queensway tube station just 5 minutes walk away.

Key Features

- INTERIOR DESIGNED
- OUTSIDE SPACE
- HIGH CEILINGS
- LIFT SERVICE
- NEWLY REFURBISHED

Terms

Fees & Charges: Tenancies exceeding £100,000 Per annum £480 inc VAT, Tenancies where a company is a tenant £480 Inc VAT.



IMPORTANT: We would inform prospective purchasers that these sales particulars have been prepared as a general guide only. A detailed survey has not been carried out, nor the services, appliances and fittings tested. Room sizes should not be relied upon for furnishing purposes and are approximate. If floor plans are included, they are for guidance only and illustration purposes only and may not be to scale. If there are any important matters likely to affect your decision to buy, please contact us before viewing the property.