





The accommodation

This fabulous home boasts a welcoming hallway upon entry with a handy downstairs WC, a well designed kitchen and a versatile reception room on the ground floor. The first floor boasts an ensuite bedroom plus a second lounge/further bedroom and the top floor hosts three further bedrooms and two more bathrooms. The owners have also done work to the loft to create a good storage option. Wow!

Let's look outside..

The property has a well established rear garden, laid to lawn and a well maintained raised decking area, perfect for drinks on a summer evening. Parking is available in a nearby car park with two secure spaces.

The location

This superb family home is nestled within a hugely popular development - particularly for families. Windermere Park is conveniently situated for the picturesque Heysham Village, Half Moon Bay, Heysham Primary Care Centre, Heysham Golf Club and the Bay Gateway M6 link below. We also mustn't forget just how accessible the imperious Morecambe Bay is with its gorgeous summer strolls and world class sunsets.

Services

The property is serviced with gas, electricity and mains water and drainage.

Tenure

The property is freehold with title number LAN185175, The vendor pays £20 per month for the upkeep of the general development. As a freehold property, you will enjoy the benefits of ownership without the constraints of leasehold agreements. This townhouse is perfect for those looking to settle in a friendly community while enjoying the comforts of a modern home.

Council Tax

Band C via Lancaster City Council.

Viewings

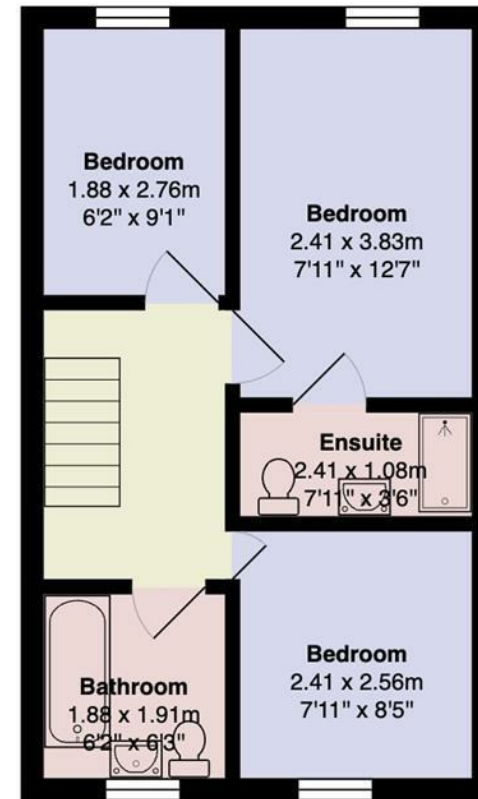
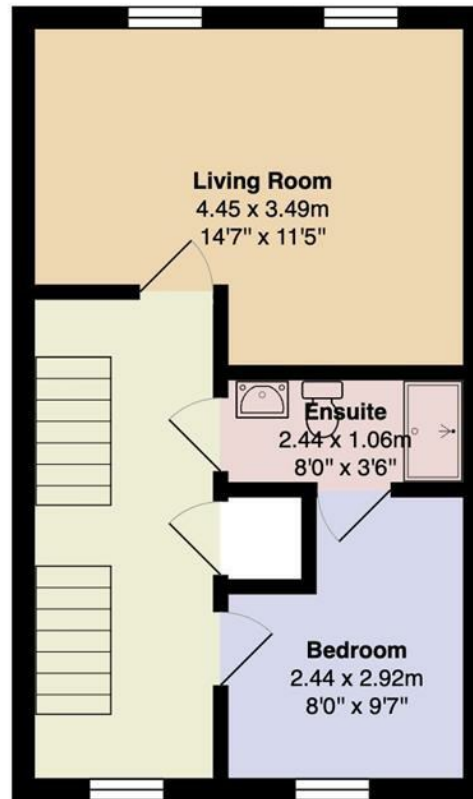
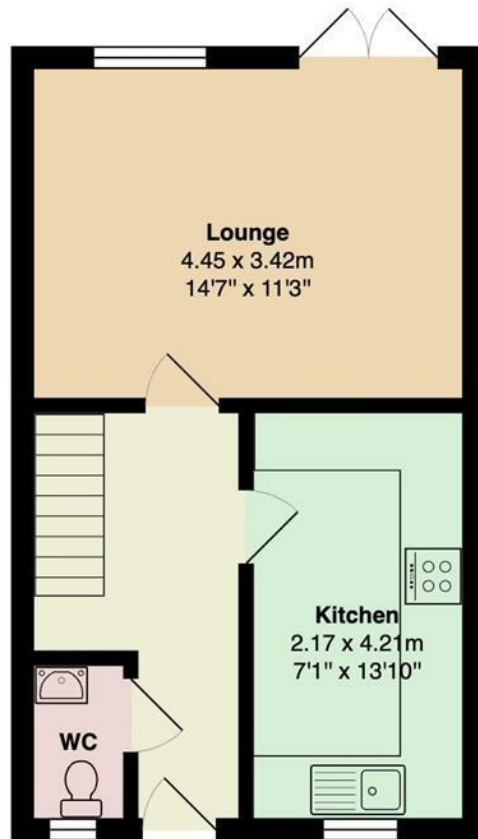
Strictly by appointment with Houseclub Estate Agents.

Energy Performance Certificate

Available online. Contact our office with any additional enquiries.

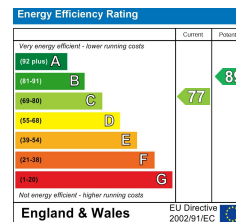






Total Area: 104.0 m² ... 1120 ft²

All measurements are approximate and for display purposes only



Your Award Winning Houseclub

