



SAVILLE ROAD, W4

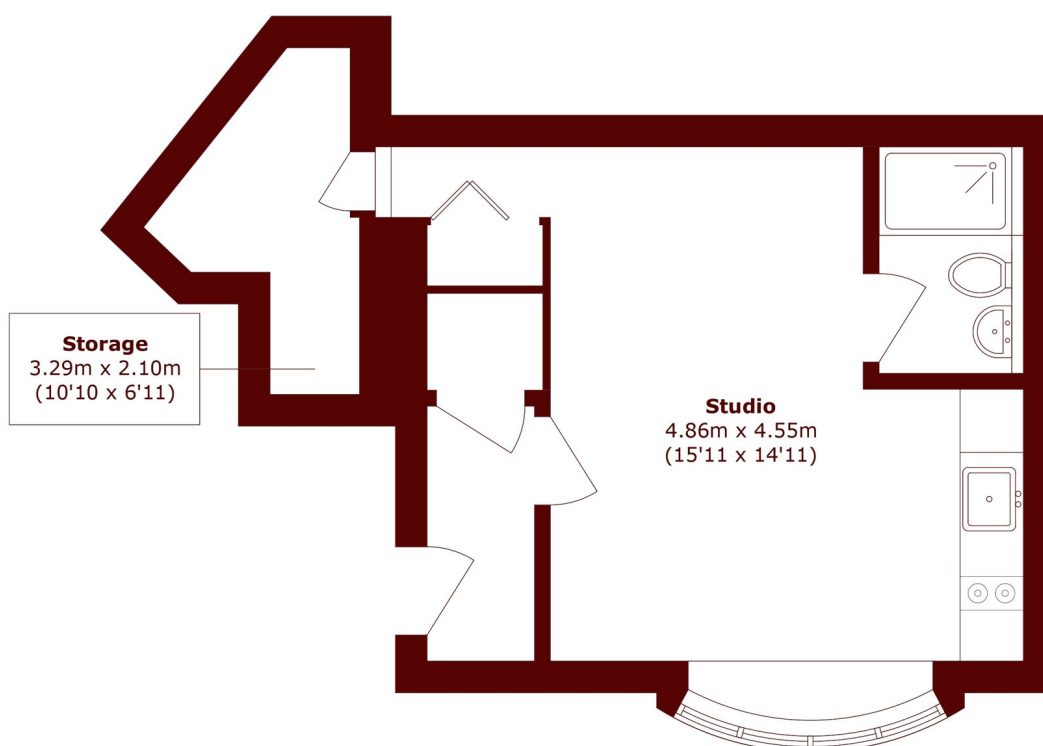
£1,600 per month

This stylish studio flat offers modern living with a contemporary kitchen and bathroom, both fitted with essential appliances and sleek fixtures.

Studio apartment
Modern interior
Large living space

Recently renovated
Some bills included
Energy rating: c

STEP INSIDE SAVILLE ROAD



Total area (approx.): 33.2 sq. m (357.4 sq. ft)

Chiswick
020 8629 0900

Energy Rating: C We aim to make our particulars both accurate and reliable. However, they are not guaranteed; nor do they form part of an offer or contract. If you require clarification on any points then please contact us, especially if you're traveling some distance to view. Please note that appliances and heating systems have not been tested and therefore no warranties can be given as to their good working order

MARSH &
PARSONS