



**Georgian Drive, Coxheath, Maidstone, Kent, ME17 4QT**  
**Price £475,000**





THREE BEDROOM LINK-DETACHED HOME IN SOUGHT AFTER CUL DE SAC IN THE HEART OF COXHEATH WITHIN WALKING DISTANCE OF LOCAL AMMENTIES INCLUDING DOCTORS, BUTCHERS, BAKERS AND POPULAR PRIMARY SCHOOL.

Nestled within a highly sought-after cul-de-sac in Coxheath, this fabulous family home boasts an enviable location within walking distance of a local amenities, including local shops, primary and secondary schools, and bus stops with regular routes to Maidstone town centre. For commuters, Staplehurst and Marden stations, offering frequent train services to London, are just a brief 10-minute drive away.

This immaculately presented link-detached family home occupies a generous corner plot, with scope for further extension subject to the necessary planning permissions and consents.

Inside, this inviting home presents spacious and adaptable accommodation, comprising an entrance hall, a generously sized lounge, separate dining room, conservatory, a well-appointed fitted kitchen, as well as a practical cloakroom which completes the ground floor accommodation. Upstairs there are two double bedrooms, with the main bedroom benefiting from an ensuite shower room and built in wardrobes, while two additional bedrooms also benefit from built in wardrobes and share a well-appointed family bathroom.

Externally, the property features a driveway providing off-road parking with space for a number of vehicles leading to a tandem garage and workshop and a well cared for and fully paved private garden with a decked seating area to the rear. This fabulous property will generate plenty of interest so do not delay and call Page and Wells Loose Office today and book your viewing to avoid missing out.



## GROUND FLOOR

### Entrance Hall

Lounge 20'0" x 11'5" (6.10m x 3.50m)

Kitchen 9'3" x 7'4" (2.83m x 2.25m)

### Downstairs Cloakroom

Dining Room 13'1" x 9'0" (4.00m x 2.75m)

Conservatory 12'3" x 9'9" (3.75m x 2.98m)

## FIRST FLOOR

Bedroom 1 14'3" x 9'10" (4.35m x 3.02m)

### En-Suite Shower Room

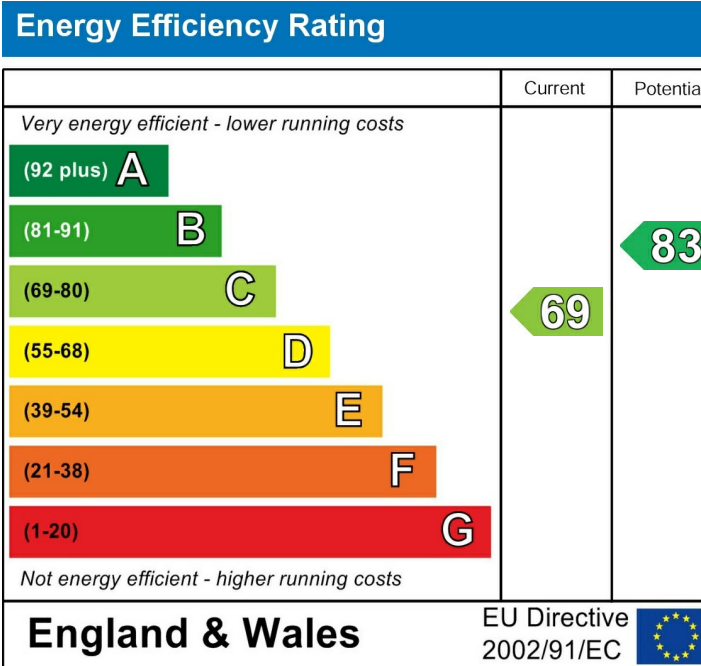
Bedroom 2 11'5" x 11'4" (3.50m x 3.47m)

Bedroom 3 8'6" x 8'4" (2.60m x 2.56m)

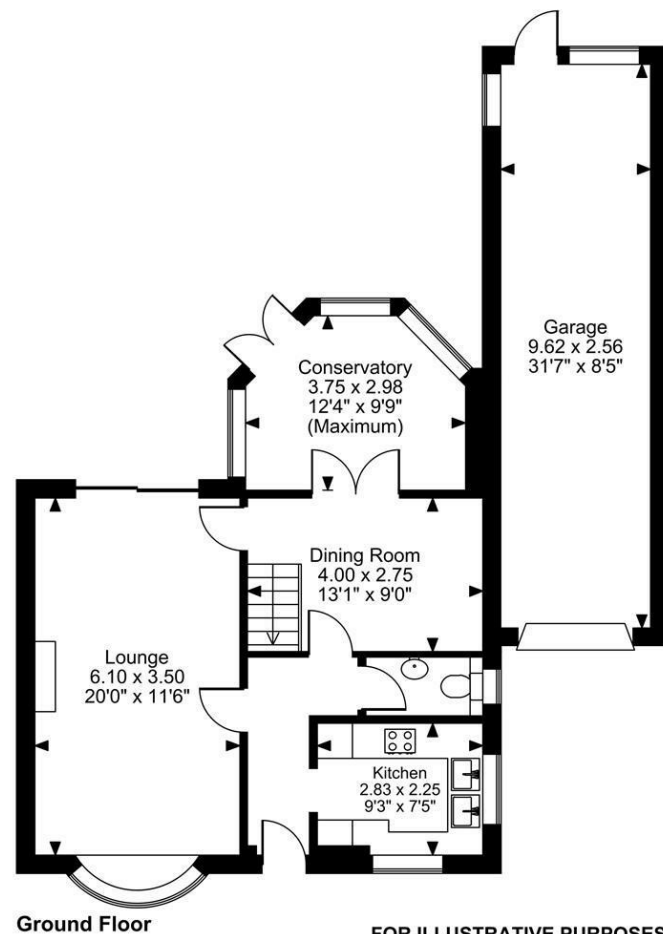
### Family Bathroom

## EXTERNALLY

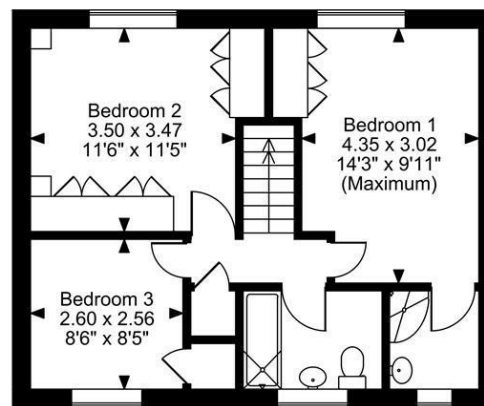
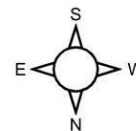
Garage 31'6" x 8'4" (9.62m x 2.56m)







**Georgian Drive, Coxheath, Maidstone**  
**Approximate Gross Internal Area**  
**Main House = 1111 Sq Ft/103 Sq M**  
**Garage = 265 Sq Ft/25 Sq M**  
**Total = 1376 Sq Ft/128 Sq M**



**FOR ILLUSTRATIVE PURPOSES ONLY - NOT TO SCALE**

The position & size of doors, windows, appliances and other features are approximate only.  
 © ehouse. Unauthorised reproduction prohibited. Drawing ref. dig/8677429/LCO

