

## 10, Whittings Court Paynes Park,

Guide Price £150,000

1 1 1



A fantastic opportunity to acquire this well-presented ground floor apartment, exclusively available for the over 55s, ideally positioned in the very heart of Hitchin town centre.

## Key Features

- Must see video tour
- Exclusively for the over 55s
- Spacious ground floor apartment
- Private front door access offering added independence
- Re-fitted modern kitchen
- Contemporary re-fitted shower room
- Generous double bedroom
- Pets considered subject to application
- Allocated parking space
- Located in the heart of Hitchin town centre

Approximate Gross Internal Area = 48.1 sq m / 518 sq ft

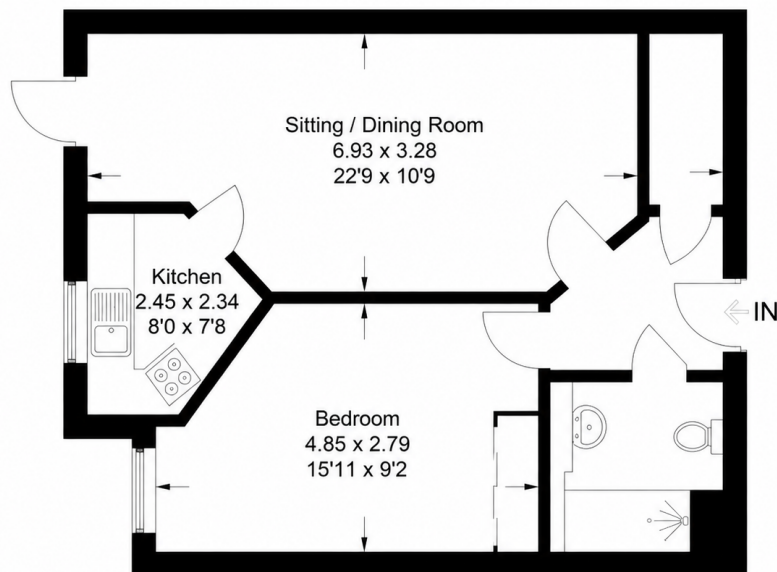


Illustration for identification purposes only,  
measurements are approximate, not to scale.

© CJ Property Marketing Produced for Stonegates