



Strutton Ground

Westminster, London, SW1P 2HR

£1,500 Per Week

A newly refurbished four double bedroom maisonette with three bathrooms and private terrace is split over the first and second floors. This property is located right in the heart of Westminster within 10 mins walk of both Westminster and Victoria stations. This huge apartment comprises of:- entrance direct from street with stairs leading up to entrance hallway, large sunny living room, bedroom one with, double patio doors leading out onto a beautiful sunny private terrace, dining kitchen which also leads out onto the terrace, stairs leading up to the second floor taking you to the large master bedroom with en-suite shower room, third bedroom also with en-suite shower room, main bathroom and fourth double bedroom to the rear. This property benefits from having gas central heating, private terrace patio, brand new furnishings throughout. This is a unique property, right in the heart of Westminster and is perfect for either a family or four sharers. The property is offered furnished and is available now.

- Four Double Bedrooms
- Three Bathrooms
- First & Second Floors
- Brand New Furnishings throughout
- Gas Central Heating
- Large private patio
- Superb Location

Viewing

Please contact our Messila Residential Office on 020 7586 6699 if you wish to arrange a viewing appointment for this property or require further information.



4



3

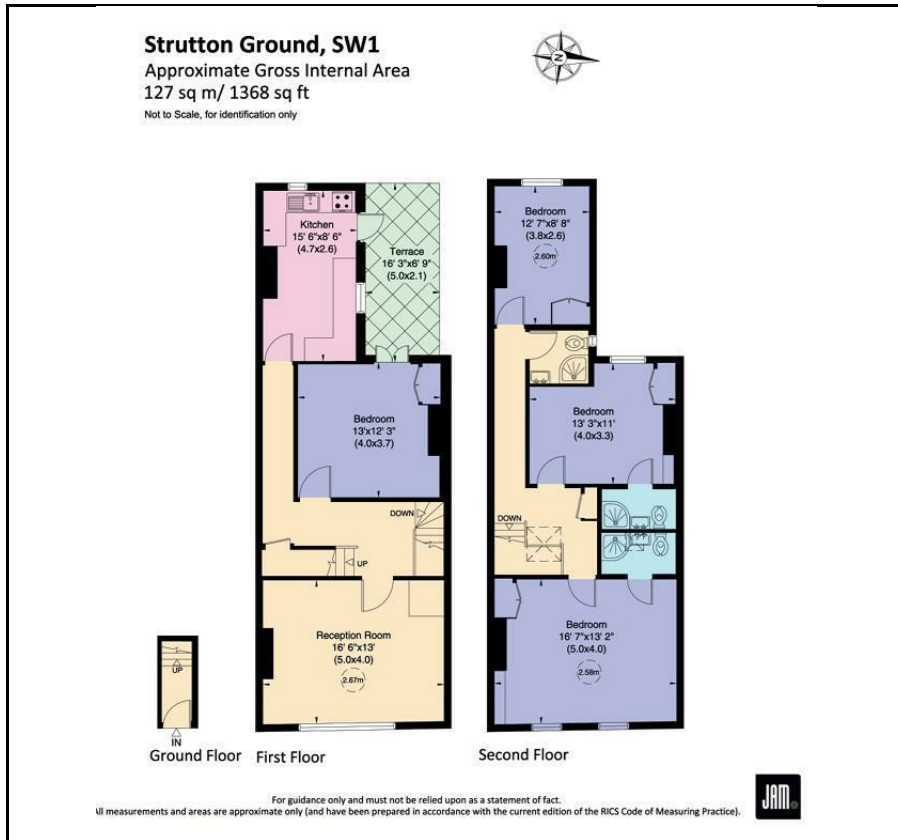


1



D

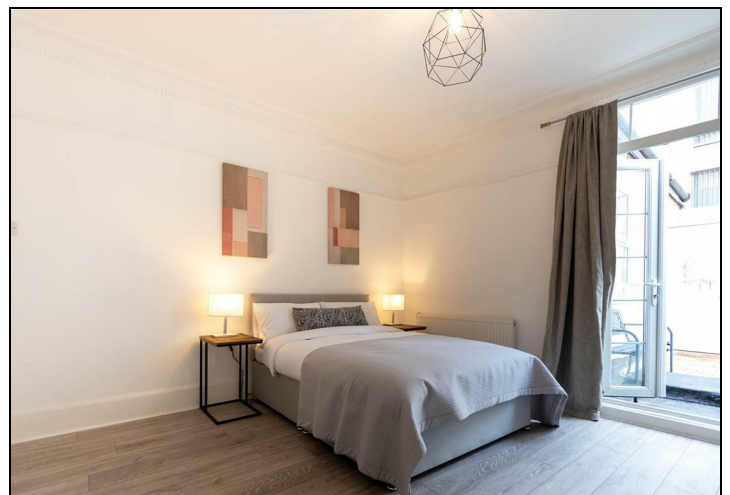
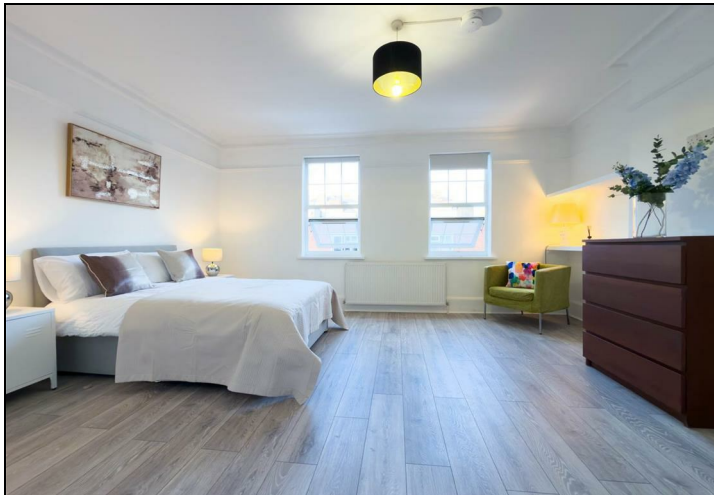
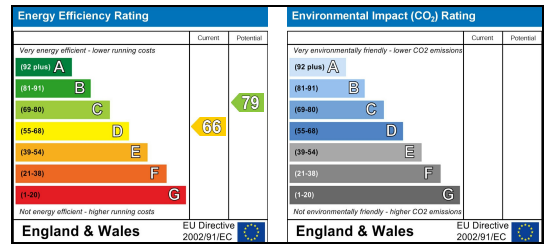
Floor Plan



Area Map



Energy Efficiency Graph



These particulars, whilst believed to be accurate are set out as a general outline only for guidance and do not constitute any part of an offer or contract. Intending purchasers should not rely on them as statements of representation of fact, but must satisfy themselves by inspection or otherwise as to their accuracy. No person in this firm's employment has the authority to make or give any representation or warranty in respect of the property.

Messila Residential

137 Park Road, London, NW8 7HT

T: 020 7586 6699 E: regentspark@messilaresidential.com W: messilaresidential.com