

# BRUCE MATHER

INDEPENDENT ESTATE AGENT

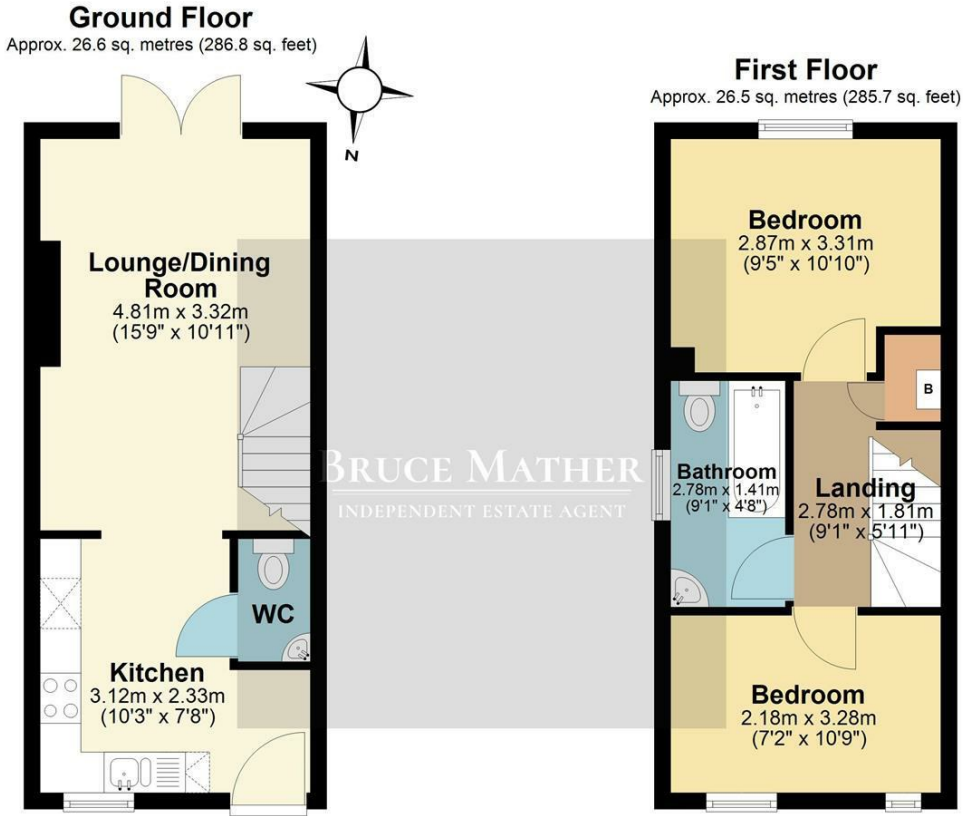


**41 The Featherworks, Boston, PE21 0AF**

**£130,000**

A two bedroom end of terrace house with two parking spaces in 'move-in' condition located on a quiet residential estate at the Fishtoft end of Boston. There is a contained grass garden to the front which leads to the 2 parking spaces, to the rear is a small garden, upon entering there is a good size well equipped kitchen open plan leading the reception room which has patio doors to the garden, there is also a downstairs cloakroom, upstairs are two bedrooms and a family bathroom. Located at the edge of Boston where you can find all the shops, schools and amenities. Please call Bruce Mather Estate Agents on 01205 365032 or [sales@brucemather.co.uk](mailto:sales@brucemather.co.uk) to arrange a viewing.

# Floor Plan

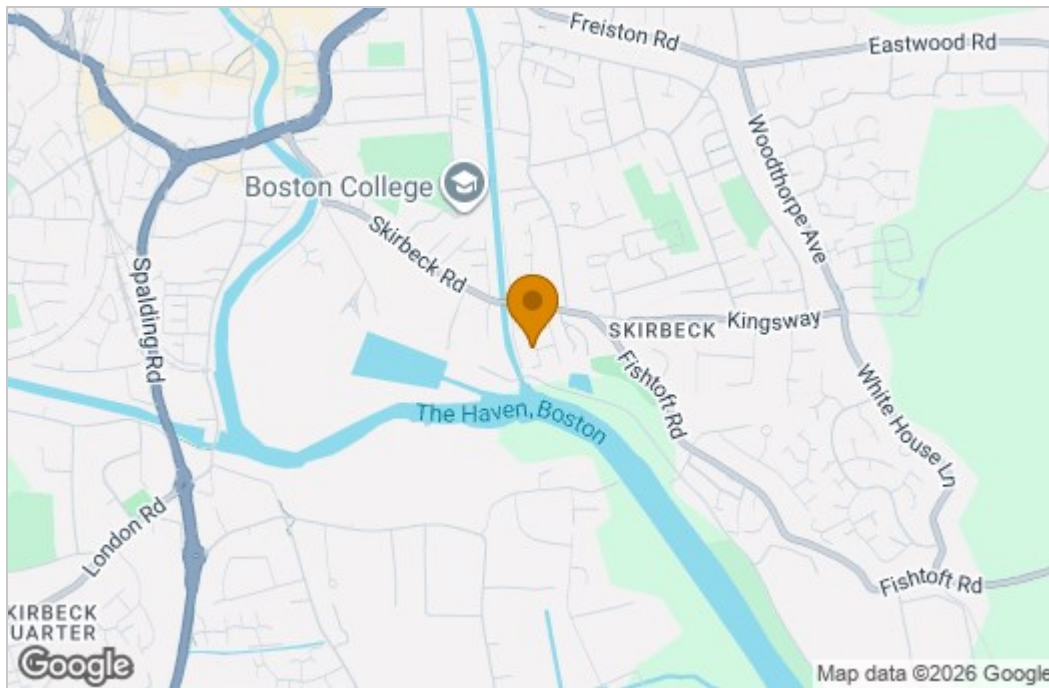


Total area: approx. 53.2 sq. metres (572.5 sq. feet)

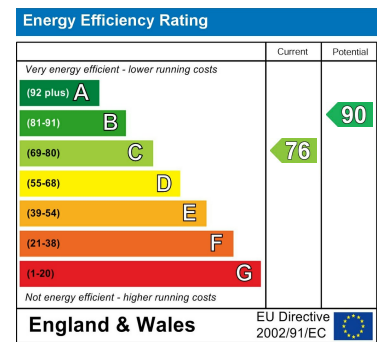
All images used are for illustrative purposes. Images are for guidance only and may not necessarily represent a true and accurate depiction of the condition of property. Floor plans are intended to give an indication of the layout only. All images, floor plans and dimensions are not intended to form part any contract.  
Plan produced using PlanUp.



# Area Map



# Energy Efficiency Graph



These particulars, whilst believed to be accurate are set out as a general outline only for guidance and do not constitute any part of an offer or contract. Intending purchasers should not rely on them as statements of representation of fact, but must satisfy themselves by inspection or otherwise as to their accuracy. No person in this firm's employment has the authority to make or give any representation or warranty in respect of the property.