



DANIEL ARCHER

exp<sup>®</sup> UK

@ daniel.archer@exp.uk.com

🌐 danielarcher.exp.uk.com

☎ 07792 947 756

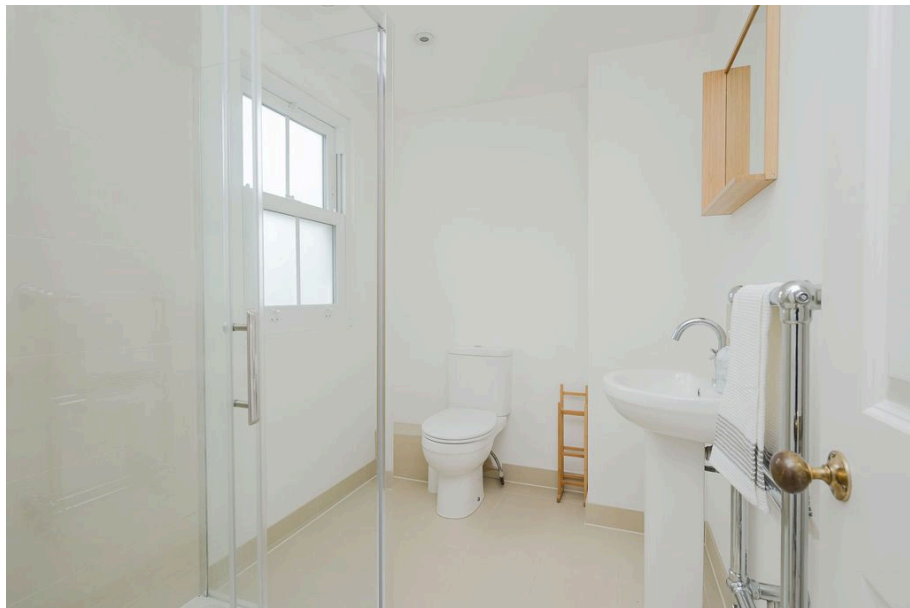
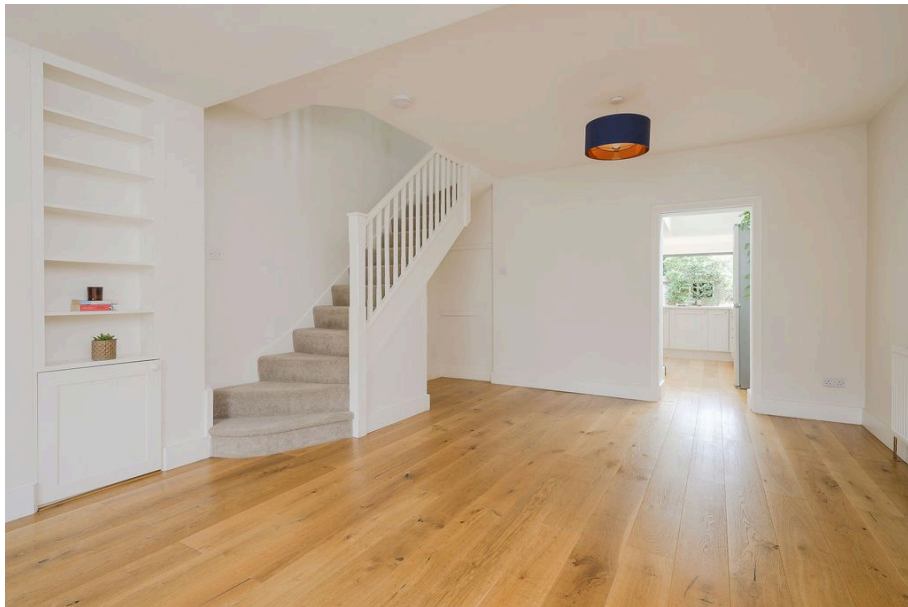
# Amity Grove, West Wimbledon, SW20

£1,150,000

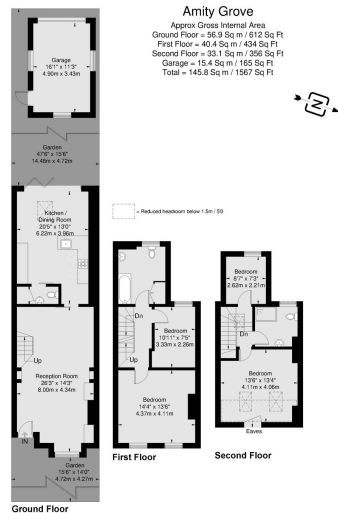
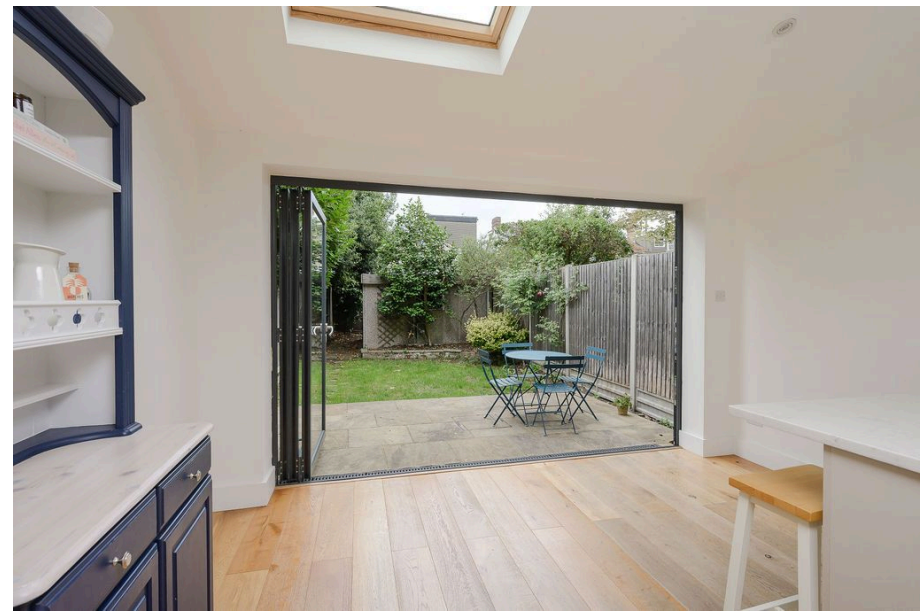
🛏️ 4 🚿 2 🚗 1



- Stunning Four Bedroom Victorian Terraced Family Home (1,567 Sq.Ft)
- Beautifully Refurbished, with Character Appeal
- Quality Kitchen with Quartz Worktops and Underfloor Heating
- Double Length Reception Room
- Wonderful Extended Kitchen/ Diner with Separate Utility & Cloakroom
- Two Bath/Shower Rooms
- Garage with rear access (or potential for convert to garden room)
- Private West Facing Garden
- No Chain
- Close to Raynes Park Station, Schools and Amenities



Gorgeous four bedroom two bath/shower room Victorian family home (1,567 Sq. Ft) with private garage, off road parking and delightful secluded West facing garden, with no onward chain, ideally situated just a short walk from Raynes Park station, schools and High Street amenities. The property has been beautifully refurbished and superbly appointed, offering bright and spacious accommodation laid out over three floors with enormous character appeal, sympathetically enhanced with stylish interiors and high quality finish. Property Ref: DA0587



Vermeda © 2021  
 Vermeda.co.uk  
 Whilst every attempt has been made to ensure the accuracy of this floor plan, measurements of doors, windows and rooms are approximate and no responsibility is taken for any error or omission. This illustration is for identification purposes only. Not drawn to scale, unless stated.  
 Dimensions given are to the nearest 1/2" and are to the points indicated by the arrow heads.

