



## STREATHAM COMMON NORTH, SW16

£395,000

- Two double bedrooms
- Share of freehold
- Close to transport links
- Excellent condition
- Garage
- EPC rating: C

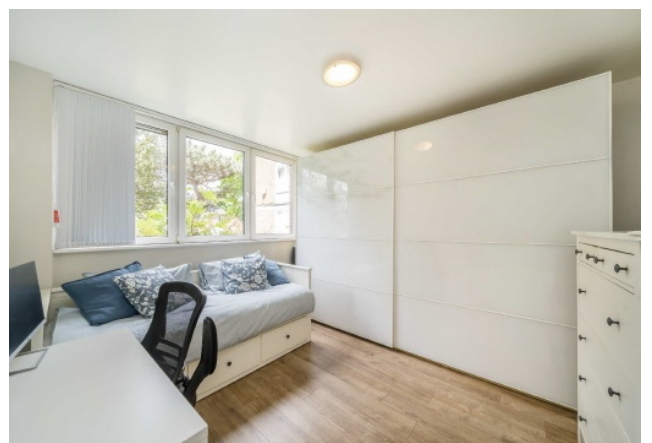
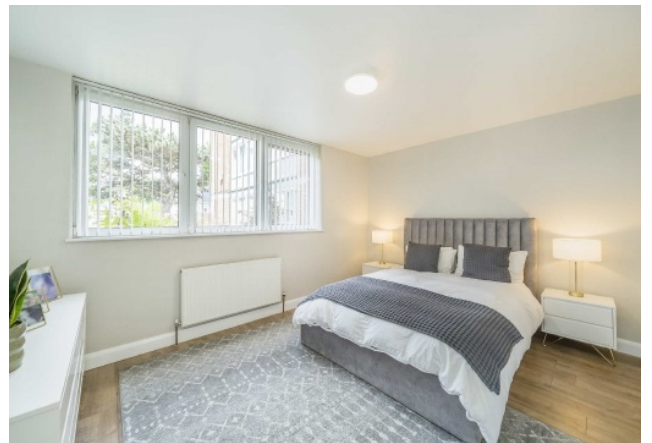




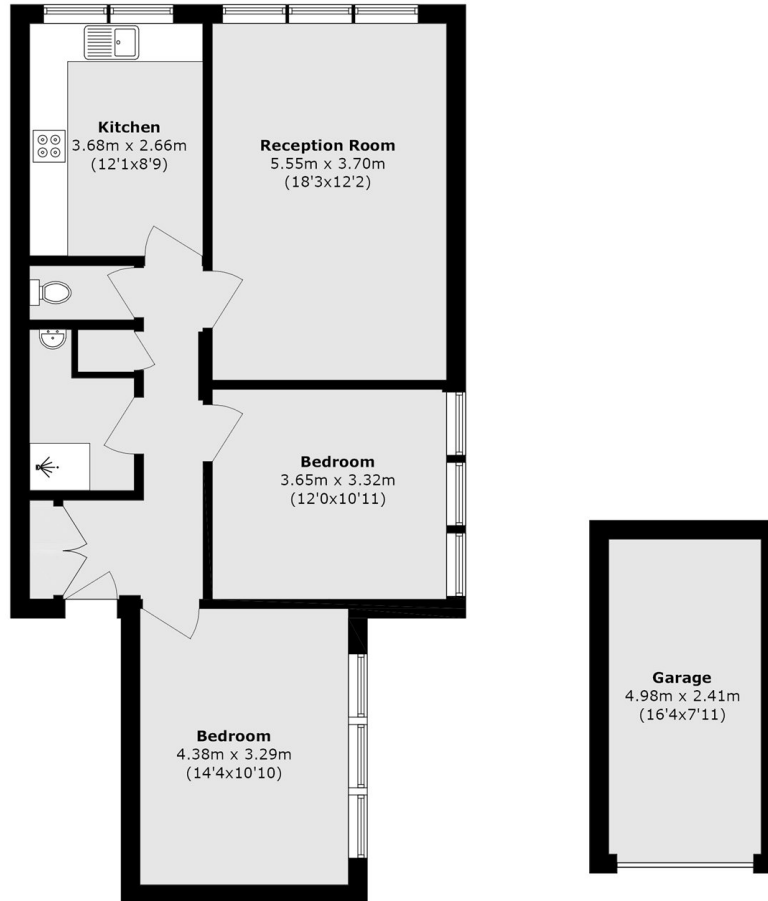
## ABOUT THE HOME

A beautifully presented and spacious two bedroom property situated on the ground floor of a purpose built block. The property also benefits from a its own garage and communal gardens.

Streatham Common is a vibrant and well-connected area that offers a blend of suburban charm and cosmopolitan convenience. Known for its leafy streets and welcoming community, Streatham provides an appealing balance of tranquility and accessibility, with excellent transport links to Central London. The area boasts an array of independent cafés, eateries, and boutiques, as well as ample green spaces, including the popular Streatham Common and nearby Tooting Bec Lido. With its diverse amenities, reputable schools, and lively community events, Streatham presents an attractive option for those seeking both a relaxed pace of life and the convenience of city living.







Total area (approx.): 74.9 sq. m (806.2 sq. ft)

(Excluding Garage)

Garage area (approx.): 12.0 sq. m (129.2 sq. ft)

### JACKSONS STREATHAM

1-3 De Montfort Parade,  
Streatham High Road,  
Sales: 020 8487 3179  
Lettings: 020 8487 3180

Energy Rating: C We aim to make our particulars both accurate and reliable. However they are not guaranteed; nor do they form part of an offer or contract. If you require clarification on any points then please contact us, especially if you're traveling some distance to view. Please note that appliances and heating systems have not been tested and therefore no warranties can be given as to their good working order.