



CLEMENTS  
HABBA



For Sale

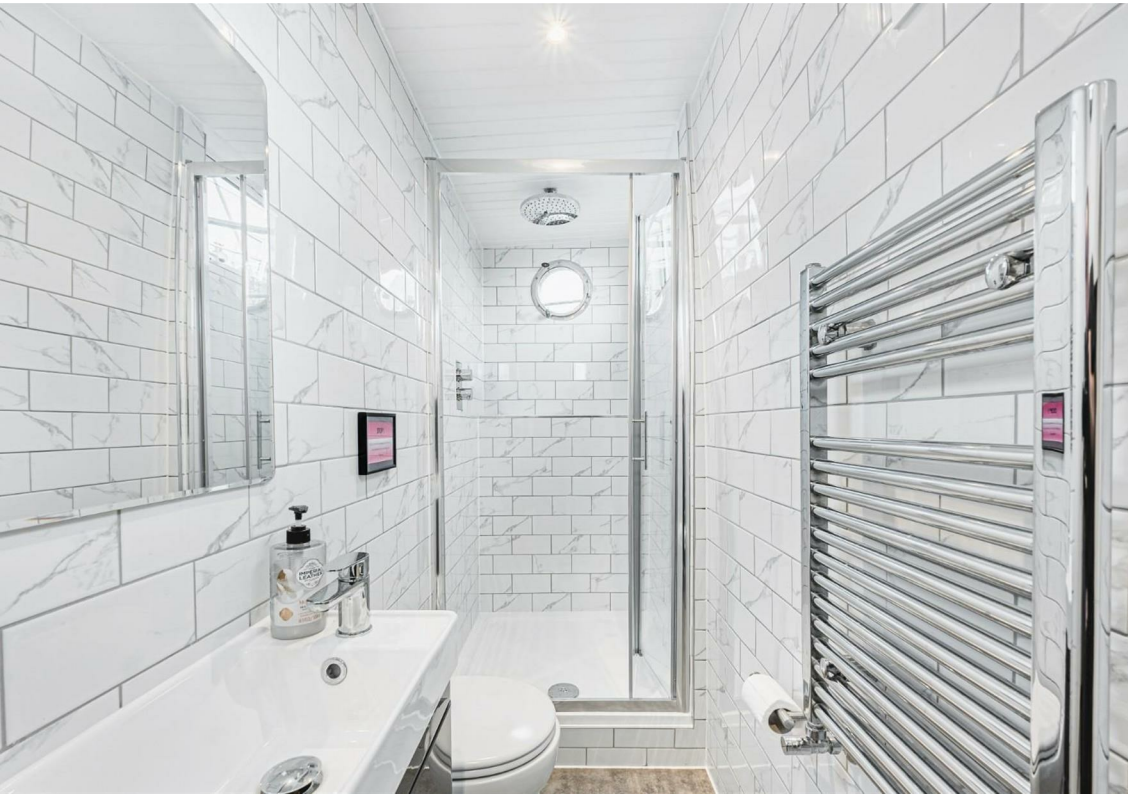
Corney Reach Way, Chiswick, London

£550,000

Non-traditional







## Summary Description

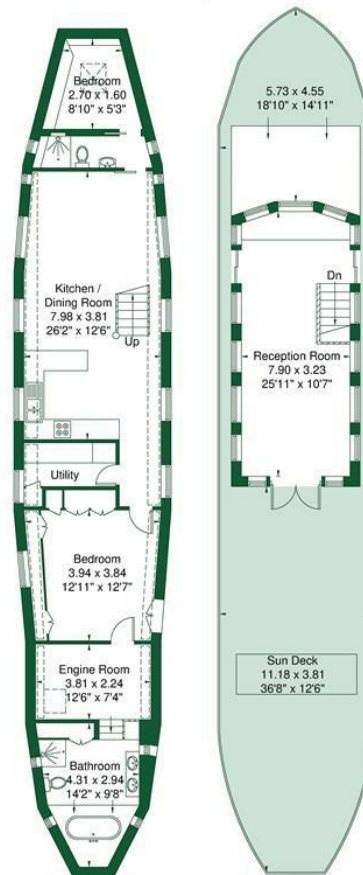
- Stunning Houseboat
- Prestigious Chiswick Pier Mooring, One of 8 Historic Boats at Pier
- 2 Bedrooms, 2 Bathrooms
- Tax Band A, No Stamp Duty
- Parking Space, Lock Up, Electricity and Water Included in Annual Mooring Fee
- Newly Renovated Throughout
- 1190 Sq Ft Internal Space
- Large Sundeck
- Fantastic Master Suite
- Offered Chain Free

# Ventana Houseboat

Approximate Gross Internal Area = 99.2 sq m / 1067 sq ft

Reduced Headroom = 11.4 sq m / 123 sq ft

Total = 110.6 sq m / 1190 sq ft



Lower Ground Floor  
73.9 sq m / 795 sq ft  
Reduced Headroom  
11.4 sq m / 123 sq ft

Ground Floor  
25.3 sq m / 272 sq ft

Although every attempt has been made to ensure accuracy, all measurements are approximate.  
The floorplan is for illustrative purposes only and not to scale.

© www.perspective.co.uk

