



## Summerwood Road, TW7

### £349,950

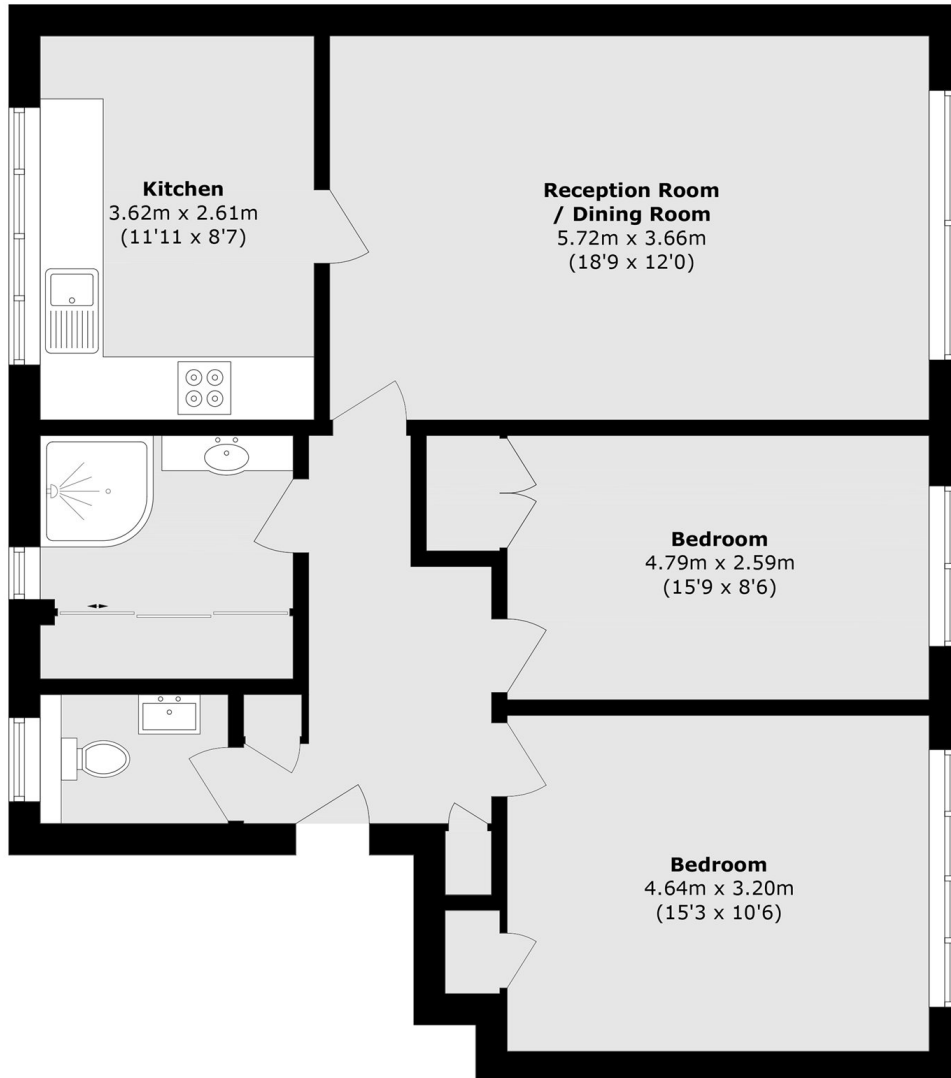
A two double bedroom apartment, set in a popular development on the border of Twickenham. The property has been lovingly renovated to an incredibly high standard, with new kitchen, flooring, carpets and more. Benefits include no onward chain, off street parking, a storage lock up on the ground floor and low service charges and ground rent.

Summerwood Road is conveniently located on the borders of Twickenham and situated close to local amenities, transport links and parks.

### Features

- No Onward Chain
- Fantastic Condition
- Fully Refurbished
- Two Double Bedrooms
- Parking Available
- Storage Shed

# Summerwood Road, Isleworth, TW7



Total area (approx.): 73.2 sq. m (787.9 sq. ft)