



Samuel Gray Gardens, KT2

£2,650 Per calendar month

An exceptional, newly refurbished apartment in a sought-after gated development, boasting two bedrooms, two bathrooms, and a bright, spacious reception room with stunning river views. Finished with new carpets, fresh paintwork, and secure underground parking.

Clyde House is ideally located in the heart of Kingston upon Thames, just moments from the River Thames. Kingston town centre is a short walk away, offering a wide range of shops, restaurants, and leisure facilities. Kingston Station is also within easy reach, providing direct links into London Waterloo, while nearby road connections via the A3 offer convenient access in and out of the city.

Features

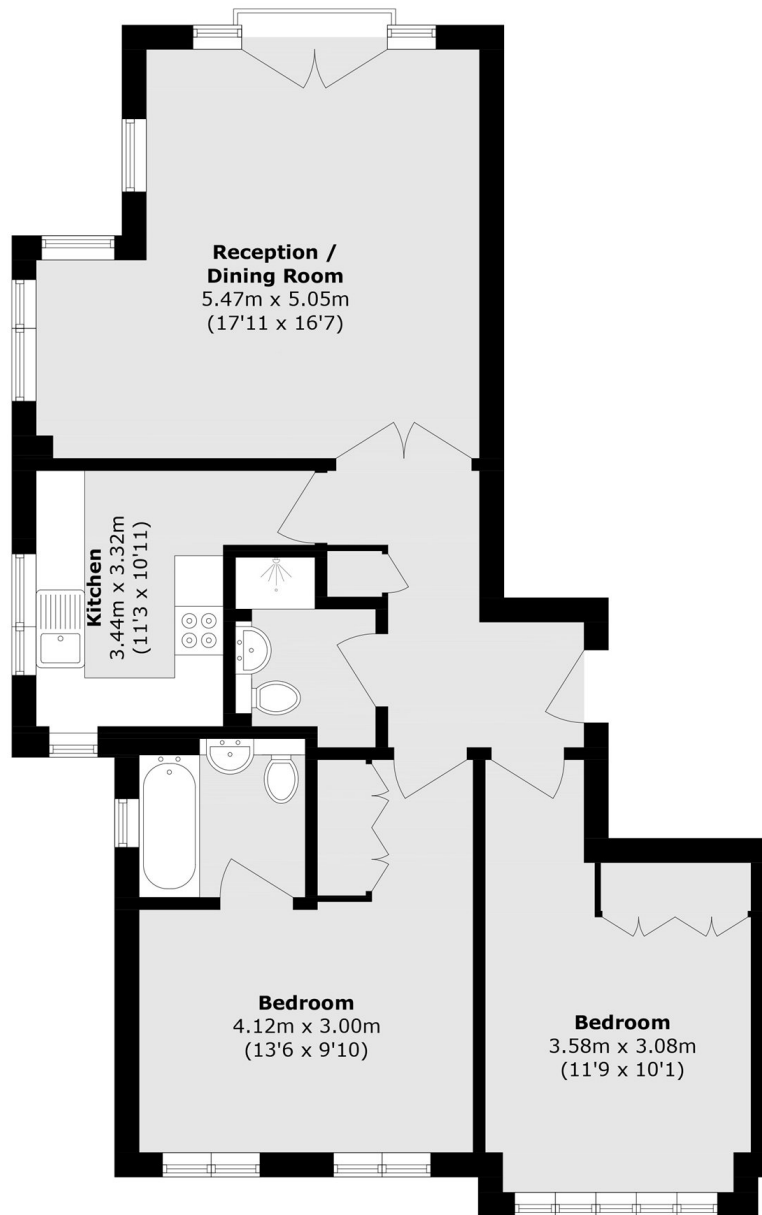
- Direct River Views
- Juliet Balcony
- Spacious Apartment
- Two Bathrooms
- Modern Kitchen
- Wood Flooring



Samuel Gray Gardens, KT2



Samuel Gray Gardens, Kingston Upon Thames, KT2



Total area (approx.): 81.6 sq. m (878.3 sq. ft)