

9B Edith Terrace, - London
- £3,300



BEAUFORT GREEN

263 New Kings Road
Fulham
London
SW6 4RB

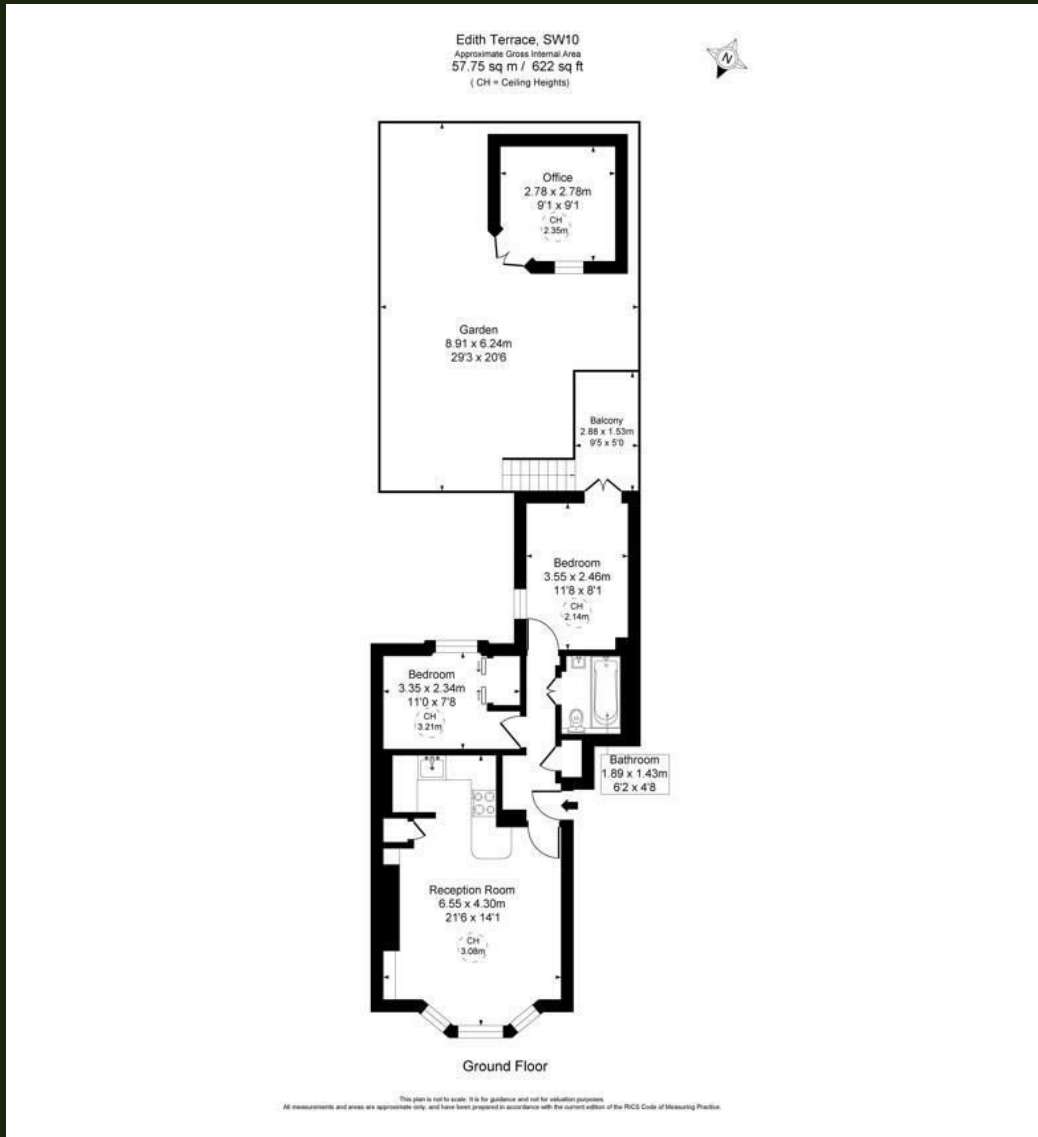




The Details

sq ft

2 Bedroom | 1 Bathroom | 1 Reception |



Situated in the heart of Chelsea, this recently renovated two-bedroom apartment occupies the raised ground floor of an attractive period building. Finished in fresh, neutral tones throughout, the property offers well-proportioned accommodation ideal for modern living.

The spacious reception room benefits from high ceilings, wooden flooring, a decorative fireplace, and a large bay window providing excellent natural light. Both double bedrooms are located at the rear of the apartment, enjoying a quiet, south-facing aspect and views over the private patio garden. The bedroom further benefits from direct access to the patio.

A key feature of the property is the private garden with a freestanding office, ideal for home working or additional flexible space.

Ideally located within easy reach of the cafés, restaurants, and boutiques of the King's Road and Fulham Road, with excellent transport links nearby.
Available immediately.