



23 Broadview Close, Kingsnorth
£315,000

Skippers

23 Broadview Close

Kingsnorth, Ashford

Modern 3-bedroom home in popular area of Bridgefield, Ashford. Bright living space, en-suite to main bedroom, allocated parking and close to schools, parks, shops, and countryside walks. Council Tax band: C

Tenure: Freehold

- 3-bedroom house
- Allocated parking to the front
- Children's play parks close-by
- Walking distance to local amenities
- En-suite to main bedroom and Ground floor cloakroom
- Popular Bridgefield's location



Hallway

Stairs to first floor, doors to living room, kitchen diner and cloakroom, radiator, laminate wood flooring.

Lounge

Window to the front and double doors leading to the garden, radiator, laminate wood flooring.

Kitchen/Diner

Matching wall and base units with work surfaces over, inset 1.5 bowl stainless steel sink/drainage, built-in oven with 4-ring gas hob and extractor above, plumbing and space for washing machine and tumble dryer, space for free-standing fridge/freezer. Double doors opening to the garden.

Cloakroom

Window to the rear, WC, wash basin, radiator, vinyl flooring.

Landing

Doors to each bedroom and family bathroom, storage cupboard, fitted carpet to the stairs and landing.

Bedroom 1

Window to the rear, radiator, fitted carpet, door to en-suite.

En-suite

Comprising a shower enclosure with thermostatic shower and bi-folding door, WC, wash basin, radiator, extractor fan, tiling to the shower enclosure, vinyl flooring. Window to the front.

Bedroom 2

Window to the front, radiator, fitted carpet.

Bedroom 3

Window to the rear, radiator, fitted carpet.

Bathroom

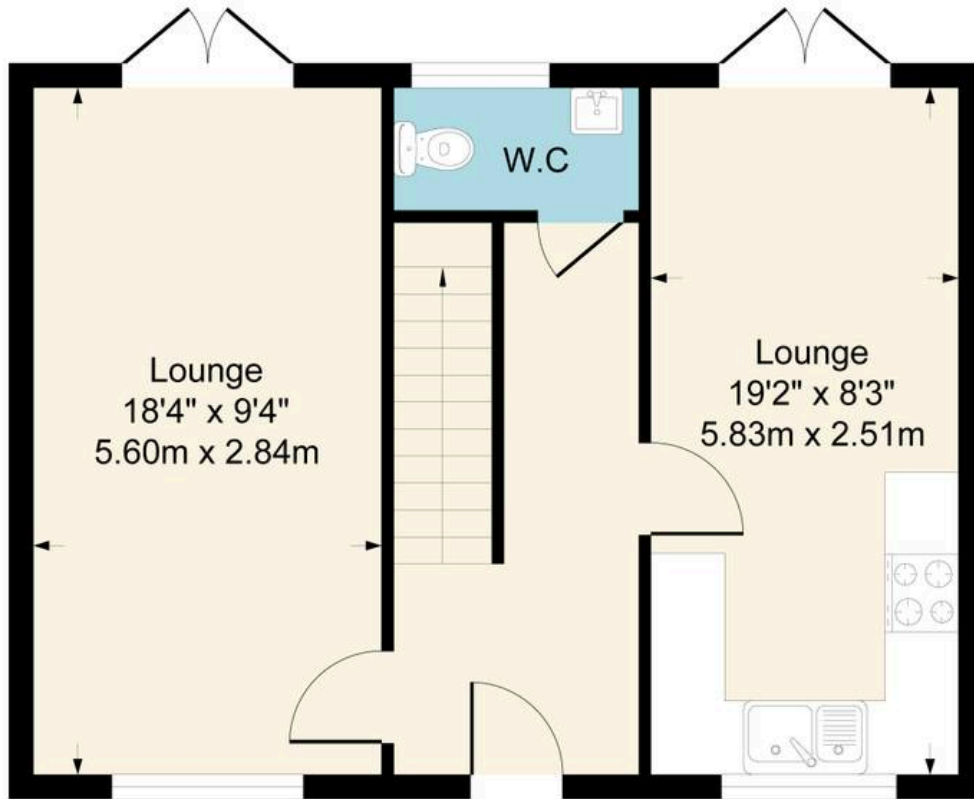
Comprising a bath with mixer taps, hand held shower head, WC, wash basin, extractor fan, radiator, partly tiled walls around the bath, vinyl flooring. Window to the front.



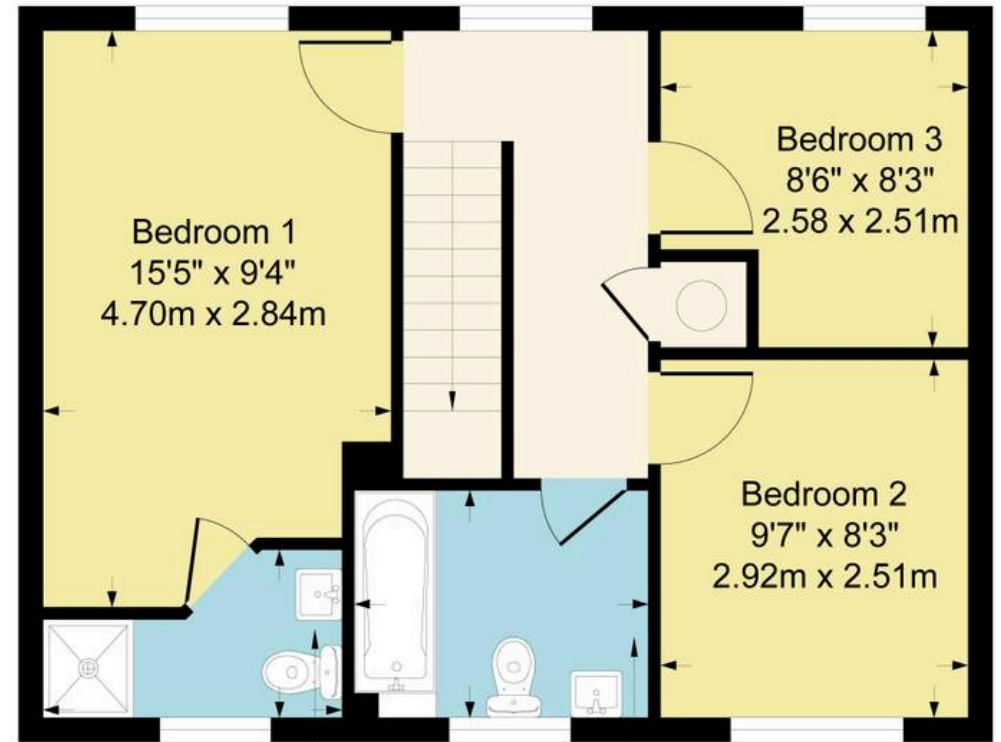




**Approximate Gross Internal Area
910 sq ft - 85 sq m**



Ground Floor



First Floor

En-suite
8'0" x 4'6"
2.44m x 1.37m

Bathroom
7'10" x 6'1"
2.40m x 1.85m

Although every attempt has been made to ensure accuracy, all measurements are approximate.
This floorplan is for illustrative purposes only and not to scale.
Measured in accordance with RICS Standards.



Skippers Estate Agents – Ashford

5 Kings Parade High Street, Ashford – TN24 8TA

01233 632383

ashford@skippers-ea.co.uk

skippers-ea.co.uk

