



Portsmouth Road

Thames Ditton, KT7 0TE

£359,950

A well-presented two-bedroom first-floor apartment in the desirable Rythe Court development, offering a bright living space with feature fireplace, modern kitchen and bathroom, two double bedrooms, communal gardens, resident parking and share of freehold. Conveniently located within walking distance of Thames Ditton village and cricket green, the River Thames and mainline stations with fast links to London Waterloo. Ideal for first-time buyers, downsizers or investors. Offered to the market with no onward chain. Service charge £191 pcm

- First floor apartment
- Well maintained
- Short distance to Surbiton & Thames Ditton
- Expansive communal grounds
- 2 bedrooms
- Off street parking
- Near Giggs Hill cricket green
- No onward chain

Floor Plan

Rythe Court

Approximate Gross Internal Area = 56.8 sq m / 611 sq ft

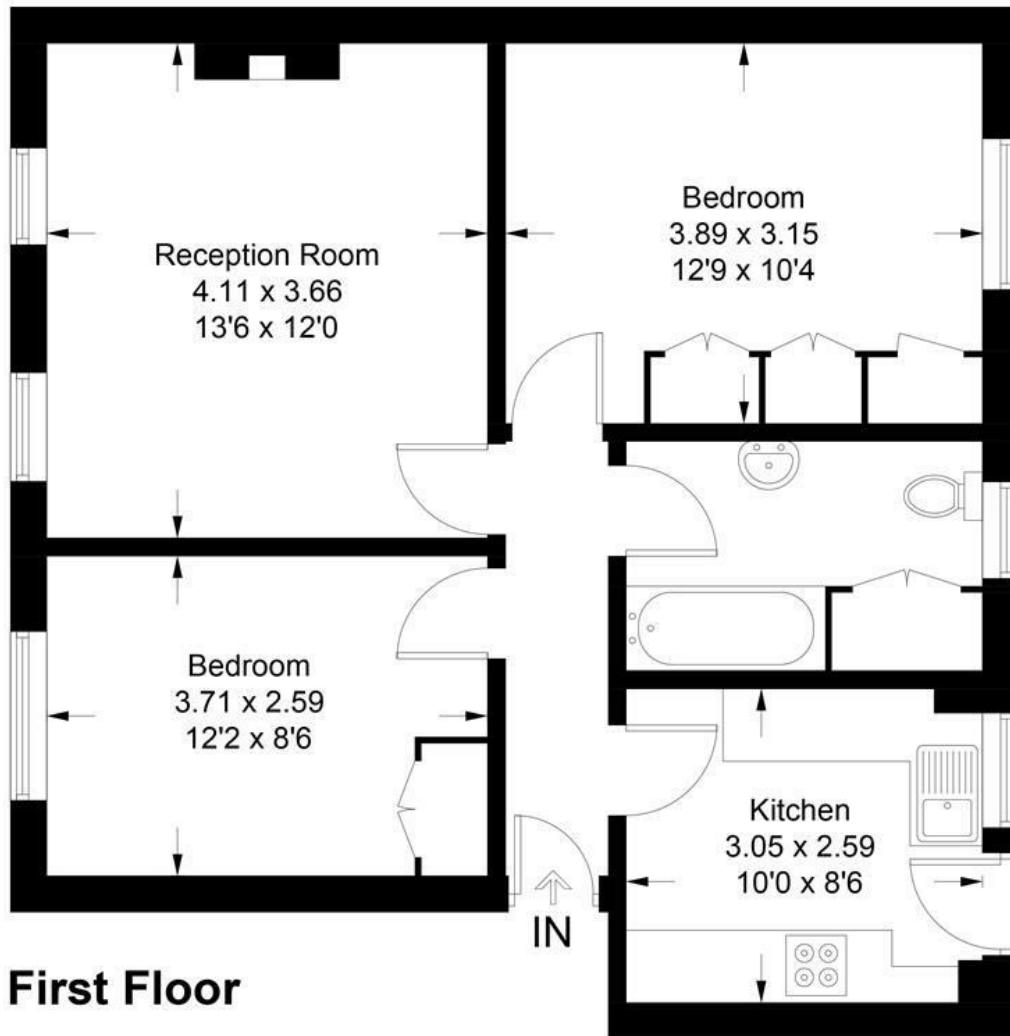
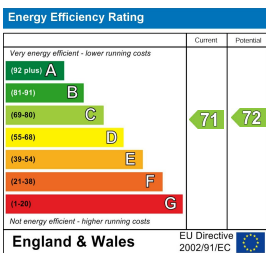


Illustration for identification purposes only, measurements are approximate, not to scale. Fourlabs.co © (ID1311704)

Energy Efficiency Graph



These particulars, whilst believed to be accurate are set out as a general outline only for guidance and do not constitute any part of an offer or contract. Intending purchasers should not rely on them as statements of representation of fact, but must satisfy themselves by inspection or otherwise as to their accuracy. No person in this firm's employment has the authority to make or give any representation or warranty in respect of the property.