



Flat 4, 173 Narborough Road, Leicester, LE3 0PE
£90,000



Part of



Flat 4, 173 Narborough Road

Leicester

Chain free one-bedroom flat on Narborough Road with shared garden, modern kitchen, and strong rental yield (£725 PCM). Ideal for first-time buyers or investors. Great location and transport links. Council Tax band: A

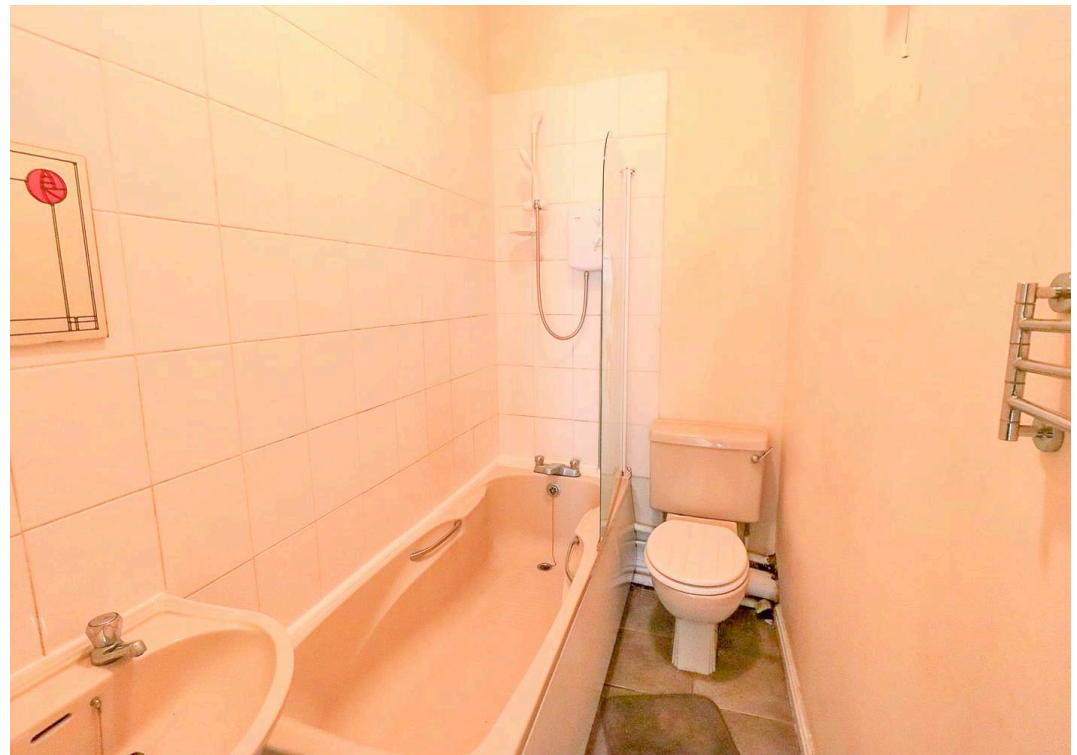
Tenure: Leasehold

EPC Energy Efficiency Rating: D

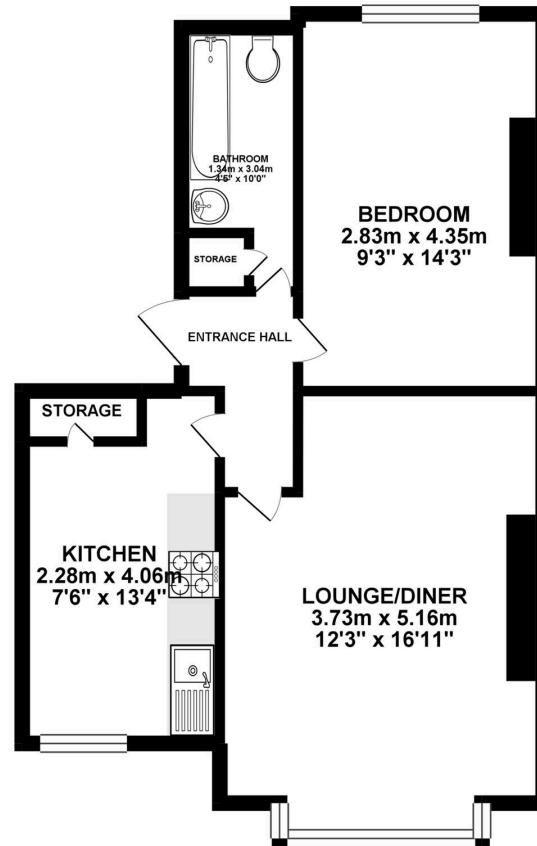
EPC Environmental Impact Rating:

- One Bedroom Flat Offered With No Upward Chain
- Prime Location on the Popular Narborough Road
- Spacious Double Bedroom & Bright Living Area
- Modern Fitted Kitchen & Well-Maintained Bathroom
- Access to a Shared Rear Garden
- Estimated Rental Income £725 PCM (Approx. 9.6% Gross Yield)





GROUND FLOOR 49 sq. m.
(527.43 sq. ft.)



TOTAL FLOOR AREA : 49.00 sq. m. (527.43 sq. ft.) approx.

Whilst every attempt has been made to ensure the accuracy of the floorplan contained here, measurements of doors, windows, rooms and any other items are approximate and no responsibility is taken for any error, omission or mis-statement. This plan is for illustrative purposes only and should be used as such by any prospective purchaser. The services, systems and appliances shown have not been tested and no guarantee as to their operability or efficiency can be given.
Made with Metropix 02026

Andrew Granger & Co (Part Of Sheldon Bosley Knight)

41c The Parade, Oadby, Leicester, LE2 5BB

01162429922 · oadbysales@sheldonbosleyknight.co.uk · www.sheldonbosleyknight.co.uk

DISCLAIMER

All fixtures and fittings mentioned in these particulars are included in the sale, all others in the property are specifically excluded.

Photographs are reproduced for general information and it must not be inferred that any item is included for sale with the property.

These particulars are thought to be materially correct. Their accuracy is not guaranteed and they do not form part of any contract.