



Fairbridge Road, London – N19 3HU  
£2,400 pcm

**DAVID  
ANDREW** | your  
most  
valuable  
asset

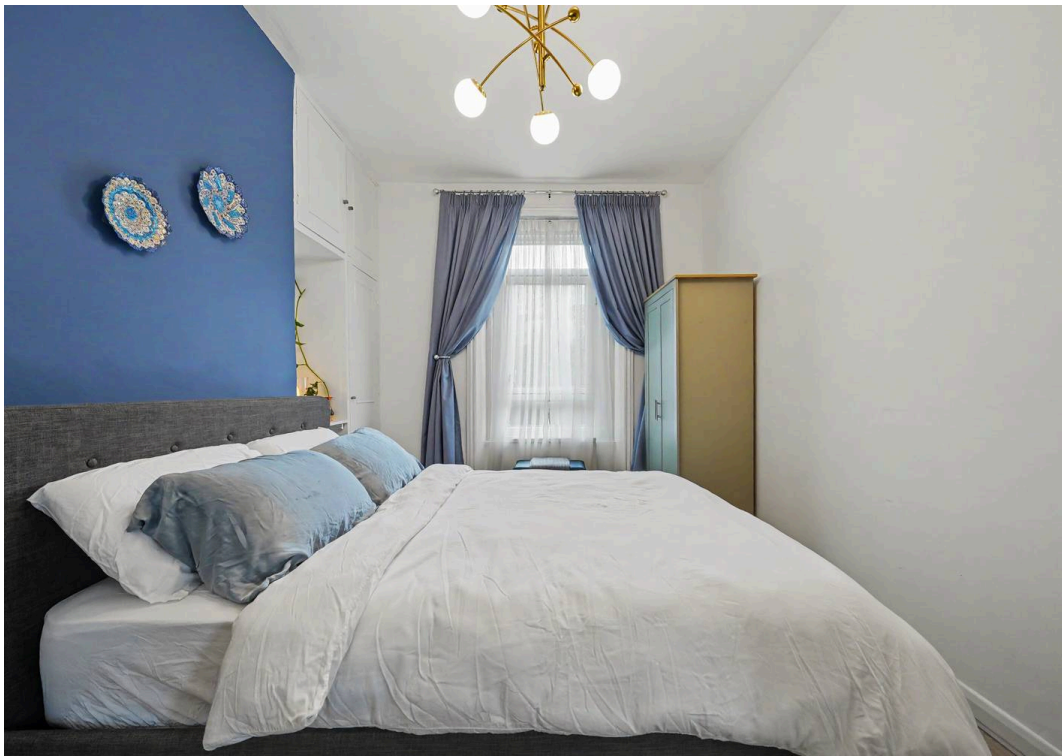
This beautifully presented two-bedroom apartment, set on the first floor of this end-of-terrace Victorian conversion, offers stylish and contemporary living space finished to a high standard throughout.

Spanning approximately 47 sq m (505 sq ft), the apartment features a spacious reception room that is perfect for relaxing or entertaining, complemented by wood flooring and an abundance of natural light streaming through double-glazed windows. The fully fitted kitchen has been thoughtfully designed to combine both style and functionality, while built-in storage solutions help maintain a clutter-free living environment. The principal bedroom is well proportioned, while the second bedroom, currently used as a home office and guest room, provides flexible and comfortable accommodation. Further features include ample storage throughout and gas central heating.

The property also enjoys superb transport links, with Upper Holloway Overground Station, Crouch Hill Overground Station and Archway Underground Station within easy walking distance, providing convenient access to Central London and beyond. The property is offered part-furnished and is available from 1st of September.

- Two Bedroom Apartment
- Comprising 47 sq mt / 505 sq ft
- Finished and Decorated to a High Standard
- Fully Fitted Kitchen
- Wood Flooring Throughout
- Ample Storage
- Excellent Location
- Walking Distance to Upper Holloway, Crouch Hill and Archway Stations
- Offered Part - Furnished
- Available 1st of September

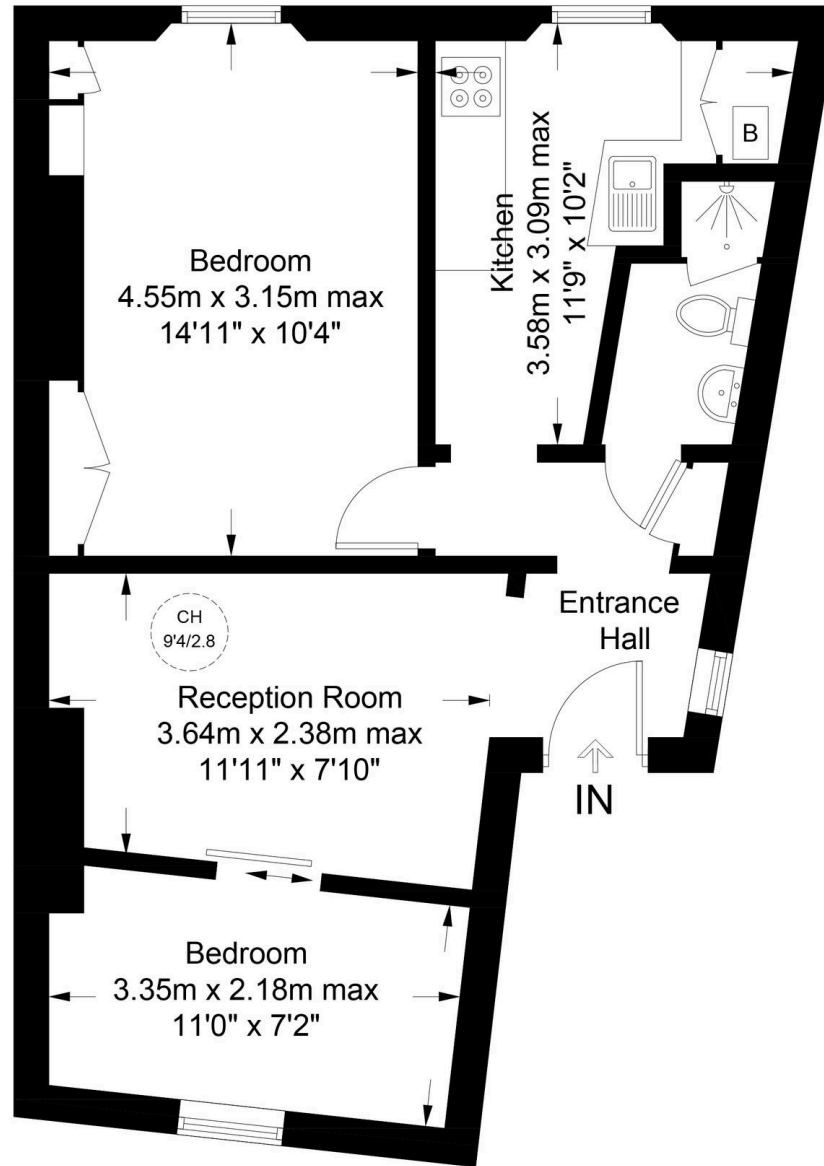




# Fairbridge Road, N19

Approximate Gross Internal Area = 505 sq ft / 46.9 sq m

**DAVID ANDREW** | your most valuable asset



## First Floor

scan to book a viewing



**Certified Property Measurer**

This plan is for layout guidance only. Not drawn to scale unless stated. Windows and door openings are approximate. Whilst every care is taken in the preparation of this plan, please check all dimensions, shapes and compass bearings before making any decisions reliant upon them. (ID962031)

**DAVID ANDREW** | your most valuable asset

has been exercised in the of these particulars, but the property must not be as representations of r fact. Prospective applicants and rely upon their own nd those of professional es. David Andrew Estates ability for any error contained in these particulars.

### Archway Office

671 Holloway Road  
London, N19 5SE

T (0)20 7619 3750

### Highbury Office

90 Highbury Park  
London, N5 2XE

T (0)20 7354 9111

### Finsbury Park Office

167 Stroud Green Road  
London, N4 3PZ

T (0)20 7281 2000

### Property Management Office

235 Blackstock Road  
London, N5 2LL

T (0)20 7354 9222

