



## Westbourne Terrace, W2

£375,000

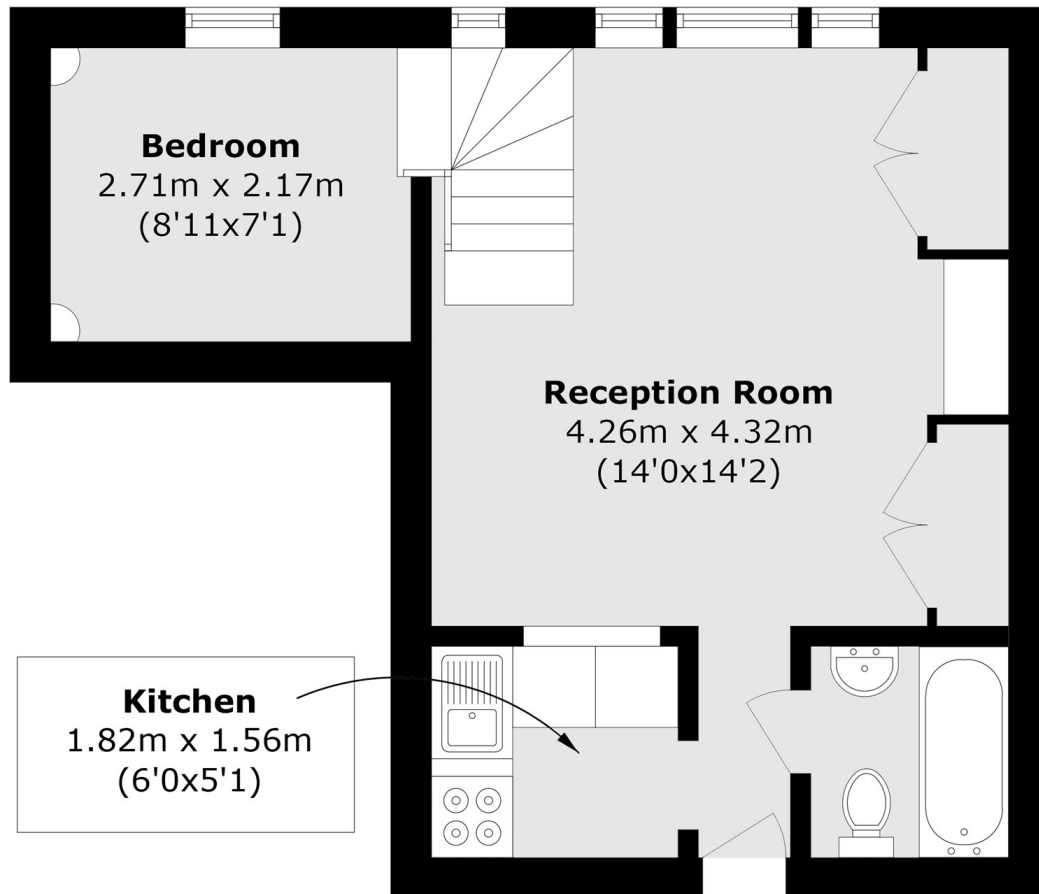
A one bedroom apartment located in a period Victorian conversion with a lift in the building. The apartment boasts high ceilings with a large sash window in the reception room offering plenty of natural light. The apartment would be perfect for a first time purchase or a pied-à-terre.

Westbourne Terrace is a tree lined residential road by Hyde Park. There's plenty of local shops and restaurants to choose from and there's a choice of National Rail, Elizabeth Line and the Underground at Paddington Station.

### Features

- One Bedroom
- Open Plan
- White Stucco Fronted
- High Ceilings
- Lift
- Hyde Park

Westbourne Terrace,  
London, W2



Total area (approx.): 31.5 sq. m (339.0 sq. ft)