



Connells

Wakehurst Mews
Horsham



Property Description

Situated in a desirable residential location this well presented two-bedroom end of terrace property offers comfortable modern living, making it an ideal home for first-time buyers, small families alike.

The property welcomes you into a bright and spacious lounge, providing the perfect setting for relaxation and everyday living. To the rear the generous kitchen diner offers ample space for cooking, dining and entertaining, with direct access to the private rear garden, ideal for outdoor dining and enjoying the warmer months.

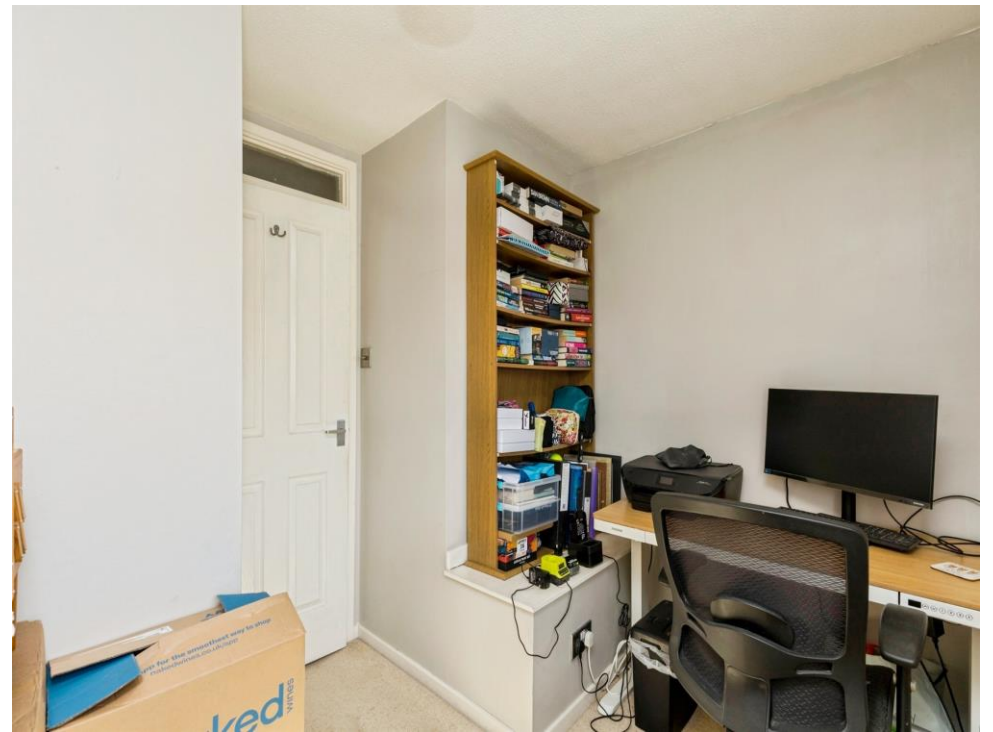
Upstairs the home features two bedrooms and along with a family bathroom, offering practical and comfortable accommodation throughout.

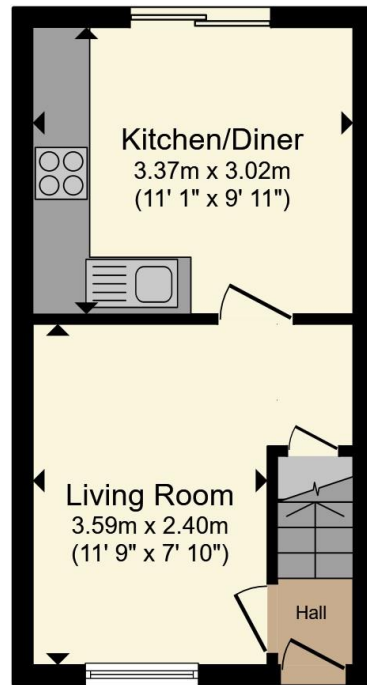
Externally the property benefits from a private enclosed rear garden, providing a secure and low maintenance outdoor space, while off road parking adds further convenience.

Combining practical living space, outdoor privacy, and a convenient layout this attractive end of terrace home presents an excellent opportunity for buyers looking for a property ready to make their own.

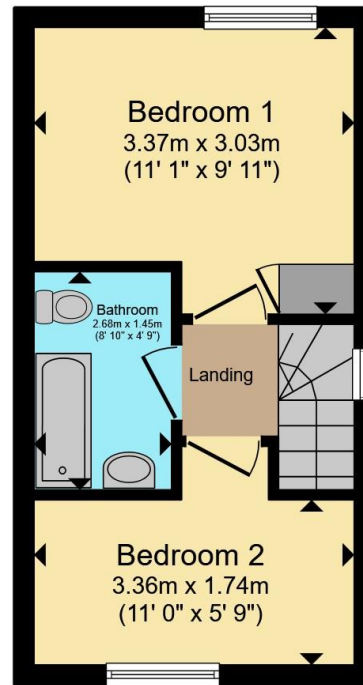








Ground Floor



First Floor

Total floor area 45.2 m² (487 sq.ft.) approx

This floor plan is for illustrative purposes only. It is not drawn to scale. Any measurements, floor areas (including any total floor area), openings and orientation are approximate. No details are guaranteed, they cannot be relied upon for any purpose and they do not form part of any agreement. No liability is taken for any error, omission or misstatement. A party must rely upon its own inspection(s). Powered by www.propertybox.io



To view this property please contact Connells on

T 01403 256 331
E horsham@connells.co.uk

31-31A Carfax
 HORSHAM RH12 1EE

EPC Rating: D Council Tax
 Band: C

Tenure: Freehold

view this property online connells.co.uk/Property/HS407565



1. MONEY LAUNDERING REGULATIONS Intending purchasers will be asked to produce identification documentation at a later stage and we would ask for your co-operation in order that there will be no delay in agreeing the sale. 2. These particulars do not constitute part or all of an offer or contract. 3. The measurements indicated are supplied for guidance only and as such must be considered incorrect. Potential buyers are advised to recheck measurements before committing to any expense. 4. We have not tested any apparatus, equipment, fixtures, fittings or services and it is in the buyers interest to check the working condition of any appliances.

Connells Residential is registered in England and Wales under company number 1489613, Registered Office is Cumbria House, 16-20 Hockliffe Street, Leighton Buzzard, Bedfordshire, LU7 1GN. VAT Registration Number is 500 2481 05.

See all our properties at www.connells.co.uk | www.rightmove.co.uk | www.zoopla.co.uk

Property Ref: HSH407565 - 0003