



## Drysdale Street, N1

£800,000

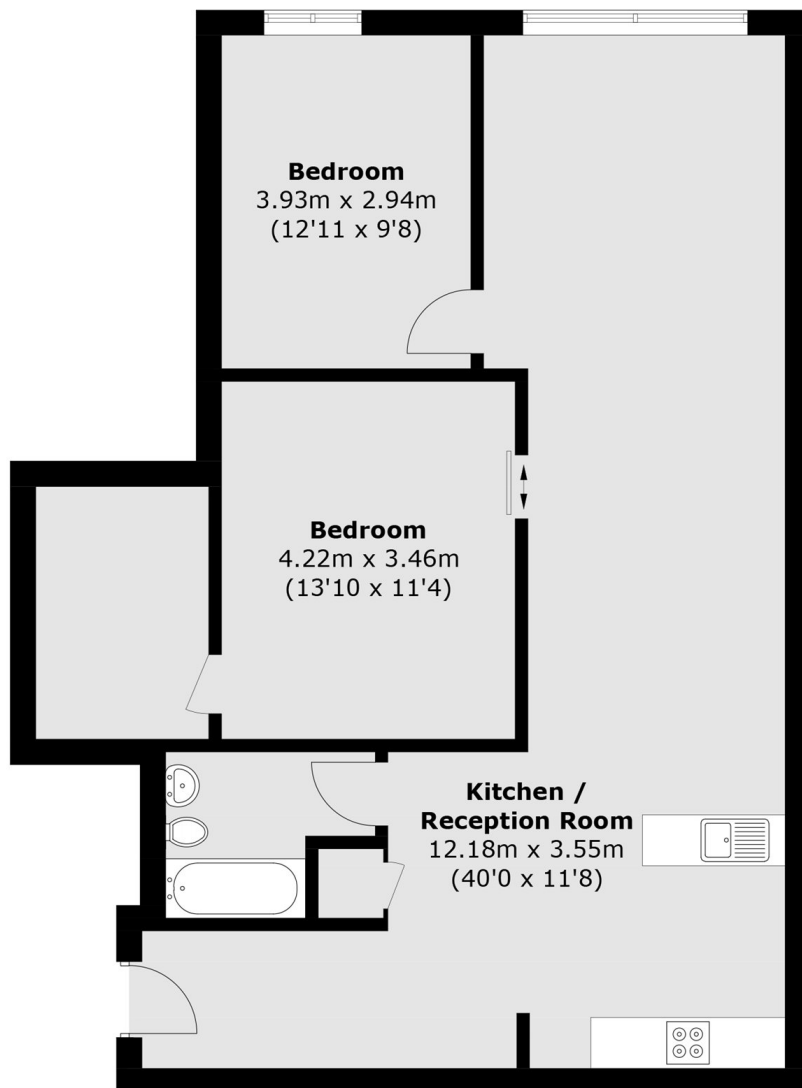
A stylish two-bedroom, two-bathroom apartment in the contemporary Timber Yard development. The apartment features two spacious double bedrooms, including a principal suite with a private walk-in wardrobe, an open-plan kitchen and living area, two well-appointed family bathrooms, and integrated storage throughout.

Located a very short distance from Hoxton Square, this apartment is in the heart of Shoreditch/Old Street with a host of bars, cafes and restaurants.

### Features

- Modern
- Two Double Bedrooms
- Two Bathroom
- Secure Entry
- Great Location
- Walk-in Wardrobe

Drysdale Street,  
London, N1



Total area (approx.): 90.5 sq. m (974.1 sq. ft)