



Juniper Court

Kensington Green, W8

£3,575 per month
(£825 per week)

A modern first floor apartment situated in this highly desirable portered and gated development. Double bedroom, modern bathroom, semi open plan kitchen and reception. Residents have access to the gym facilities within the complex.

CHESTERTONS



Juniper Court

Kensington Green, W8

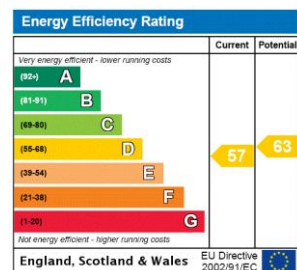
- Kensington Green Development
- Modern Bathroom
- Access to Onsite Gym Facilities
- 24 hour Concierge
- A short walk to Kensington High street
- Communal Gardens



An immaculate first floor one bedroom apartment that is situated in this highly desirable gated and portered development with lift, parking and gym facilities for residents. The property has been finished to a high standard and comprises a bright reception with two sets of French doors with Juliette balcony, stylish shower room, open plan kitchen and double bedroom with fitted wardrobes.

Ideally located a short distance to Kensington High street and open green spaces of Hyde Park.

Minimum Term: 6 months
Deposit Required: £4,125.00
Local Authority: Kensington and Chelsea
Council Tax Band: G
EPC Rating: C
Furnished

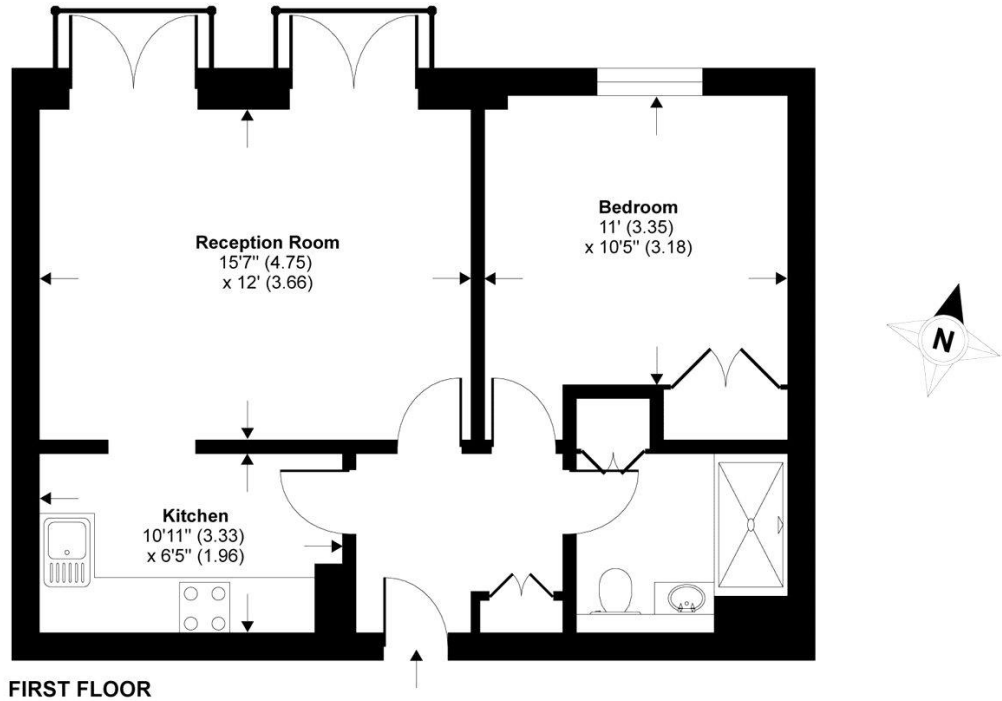


Chestertons Kensington Lettings

116 Kensington High Street
 Kensington
 London
 W8 7RW
 kensingtonlettingsusers@chestertons.co.uk
 02079377260
 chestertons.co.uk

Additional tenant charges apply (fees apply to non-AST tenancies only)
 Tenancy Agreement Fee: £300
 References per Tenant/Guarantor: £60
 Inventory check (approx. £100 – £250 inc. VAT)
 chestertons.co.uk/property-to-rent/applicable-fees

St. Marys Place, London, W8



TOTAL GROSS INTERNAL FLOOR AREA 521 SQ FT 48.4 SQ METRES

Whilst every attempt has been made to ensure the accuracy of the floor plan contained here, measurements of doors, windows and rooms are approximate and no responsibility is taken for any error, omission or misstatement. These plans are for representation purposes only as defined by RICS Code of Measuring Practice and should be used as such by any prospective purchaser. Specifically no guarantee is given on the total square footage of the property if quoted on this plan. Any figure given is for initial guidance only and should not be relied on as a basis of valuation.

Copyright nichecom.co.uk 2015 Produced for Chesterton Humberts REF : 42176

