

## 212 Heeley Road Birmingham, B29 6EN

Available for the 2026–2027 Academic Year  
£83 per person, per week (Group of 5)  
£103 per person per week (Group of 4)

Stunning student-friendly 5-bedroom house with five spacious double bedrooms, located in a great area. Recently refurbished to a high standard, featuring new carpets throughout and modern finishes.

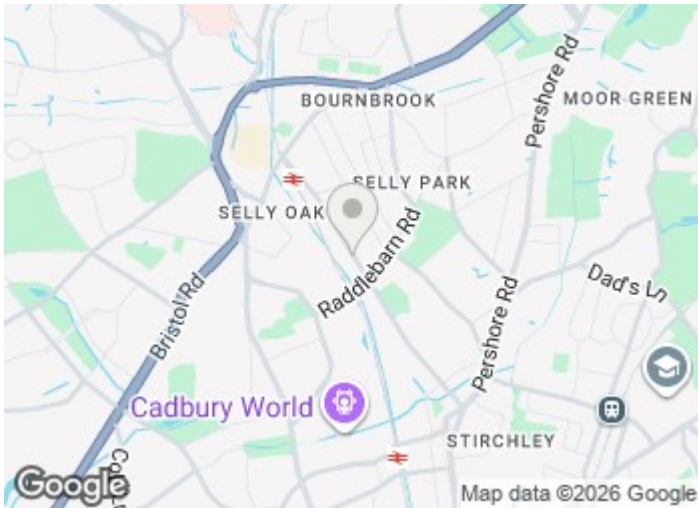
The property offers a comfortable communal living area with leather sofas, a brand-new fitted kitchen with all appliances, two modern shower rooms, plus an additional bathroom. Making it ideal for house sharing. All bedrooms are fully furnished and generously sized.

Outside, there is a large garden with patio, perfect for socialising, as well as off-road parking.

**£1,800 Per Month**

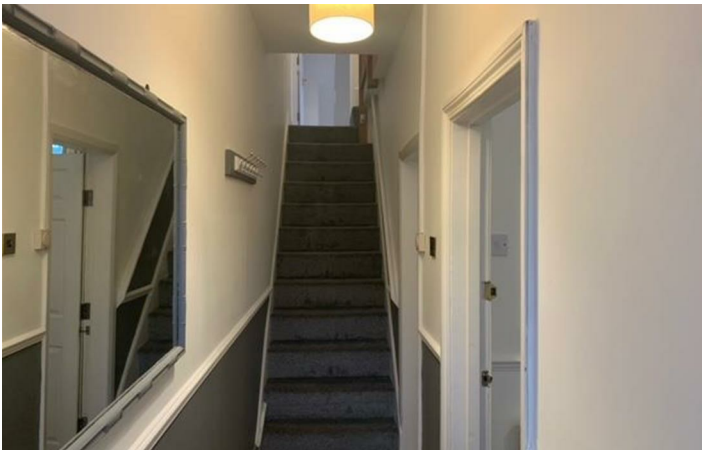
# 212 Heeley Road

Birmingham, B29 6EN



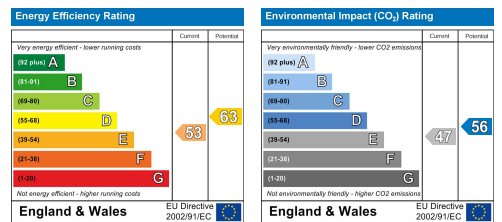
[Directions](#)





# Floor Plan

These particulars, whilst believed to be accurate are set out as a general outline only for guidance and do not constitute any part of an offer or contract. Intending purchasers should not rely on them as statements of representation of fact, but must satisfy themselves by inspection or otherwise as to their accuracy. No person in this firm's employment has the authority to make or give any representation or warranty in respect of the property.



543 Bristol Road, Selly Oak, Birmingham B29 6AU. T: 0121 472 3331 Website: [www.direct-housing.co.uk](http://www.direct-housing.co.uk)  
 E-mail: [sellyoak@direct-housing.co.uk](mailto:sellyoak@direct-housing.co.uk) [lettings@direct-housing.co.uk](mailto:lettings@direct-housing.co.uk) [accounts@direct-housing.co.uk](mailto:accounts@direct-housing.co.uk)

