



Kensington Gardens Square, W2

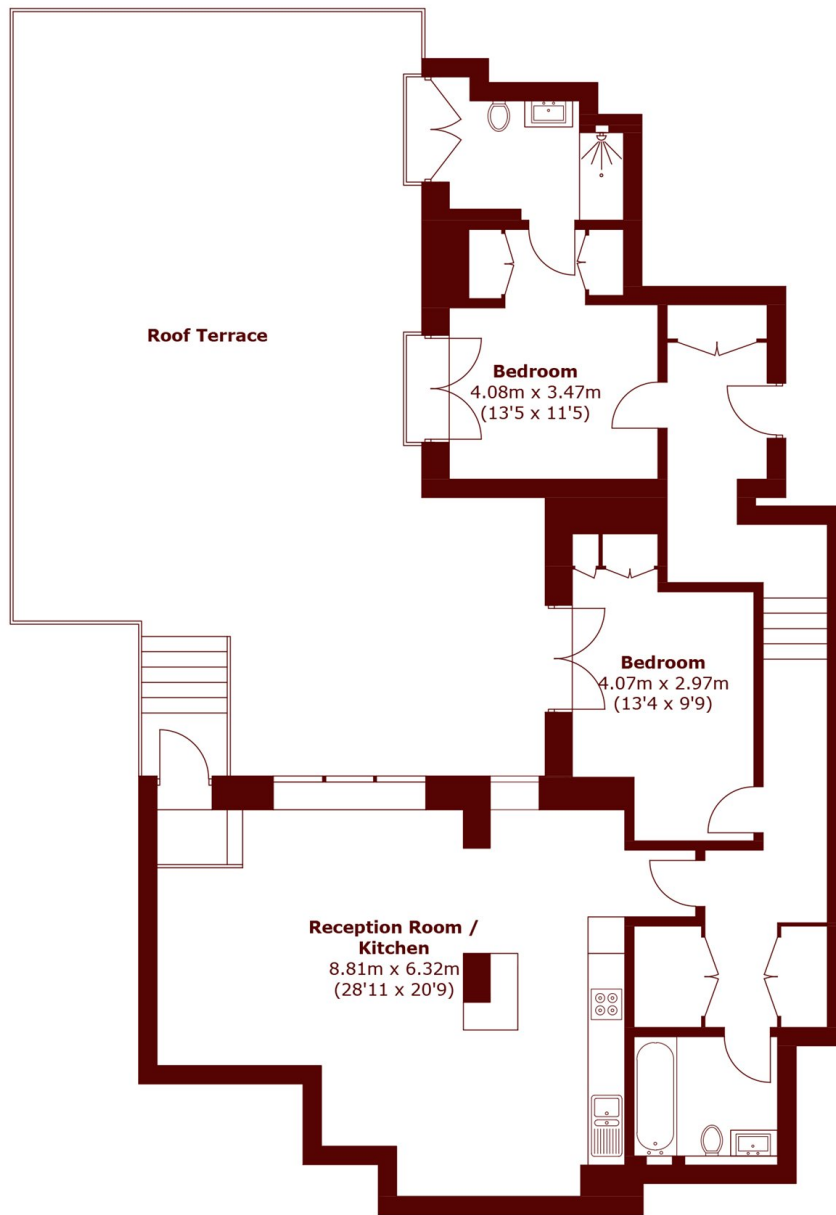
£1,661 per week (£7,197 pcm)



- Two Bedrooms
- Two Bathrooms

- Lift/Concierge
- Roof Terrace

- Miele Appliances
- Superb Location



Second Floor

Total area (approx.): 106.2 sq. m (1,143.1 sq. ft)
Roof Terrace: 87.3 sq. m (939.7 sq. ft)

Marsh & Parsons Notting Hill

2-6 Kensington Park Road,
London, W11 3BU
020 7313 2890