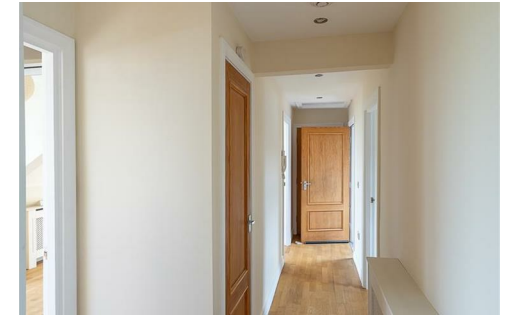




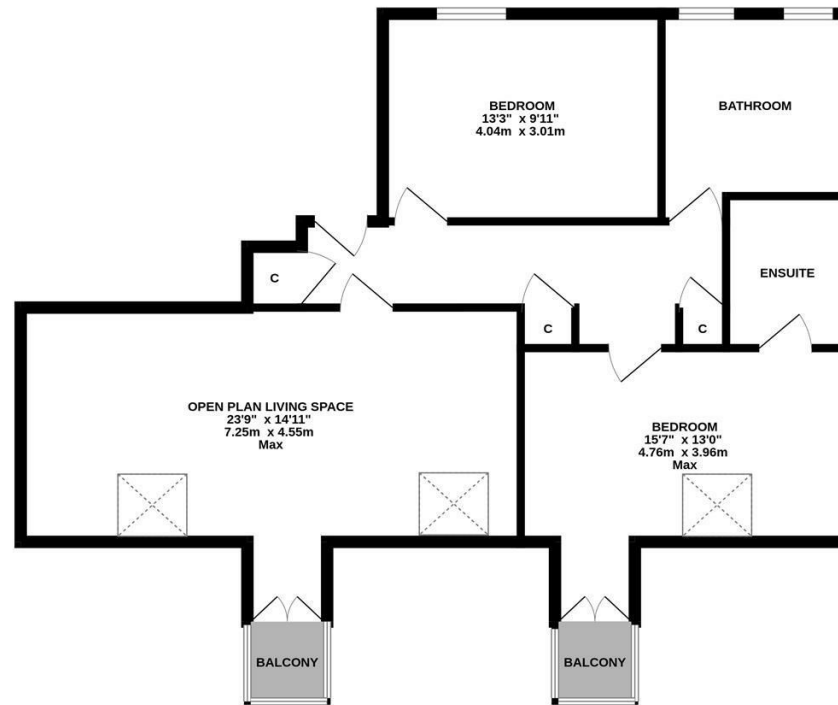
TWO DOUBLE BEDROOMS, STUNNING VIEWS & TWO BALCONIES! With no onward chain and set behind lawned communal gardens, this delightful Victorian conversion is ideally located on Belle Grove Terrace, Spital Tongues. Belle Grove Terrace, a stone's throw from the RVI and a short walk into Newcastle City Centre.

The accommodation briefly comprises: communal entrance hall with secure entry system and stairs to all floors; private entrance hall with three storage cupboards; a 23ft open plan living space with two sky lights and French doors leading on to the south-east facing balcony providing open aspect views, kitchen area with fitted units and work surfaces; shower room complete with three piece suite; two double bedrooms, bedroom one with an en-suite shower room, sky light and French doors leading on to the south-east facing balcony, again providing open aspect views. With a communal front garden and off-street parking to the rear, early viewings are advised.

2nd Floor Conversion Apartment | 801 Sq ft (74.4m²) | Two Double Bedrooms | 23ft Open Plan Living Space | Shower Room & En-Suite to Bedroom One | Front Communal Gardens | Off-Street Parking | No Onward Chain | Leasehold - Share of Freehold - 982 Years Remaining | Service Charge £1,660.44 Per Annum | Council Tax Band | EPC: Rating C



SECOND FLOOR
801 sq.ft. (74.4 sq.m.) approx.



TOTAL FLOOR AREA: 801 sq.ft. (74.4 sq.m.) approx.
Whilst every attempt has been made to ensure the accuracy of the floorplan contained here, measurements of doors, windows, rooms and any other items are approximate and no responsibility is taken for any error, omission or mis-statement. This plan is for illustrative purposes only and should be used as such by any prospective purchaser. The services, systems and appliances shown have not been tested and no guarantee as to their operability or efficiency can be given.
Made with Metropac C2020



Offers Over £235,000

IMPORTANT NOTE: These particulars and the descriptions and measurements herein do not constitute representation and whilst every effort has been made to ensure accuracy, this cannot be guaranteed.

