



GREENWICH HIGH ROAD, SE10

£2,200 per month

Modern Apartment
Two Bedrooms
Two Bathrooms
En-Suite
First Floor
Private Balcony

@marshandparsons
marshandparsons.co.uk

MARSH &
PARSONS



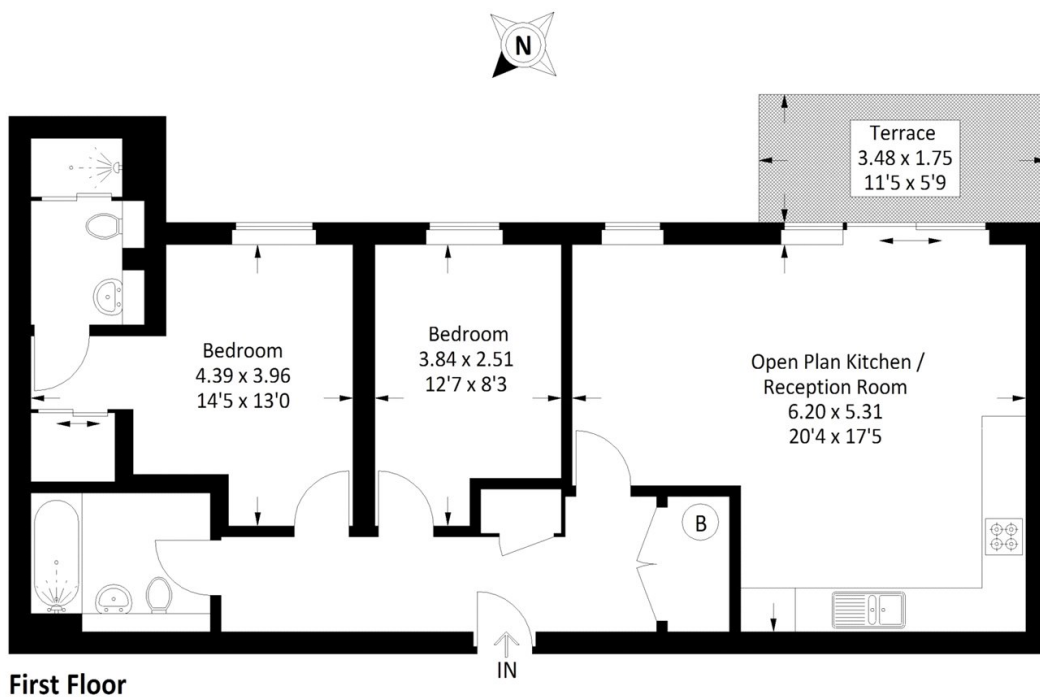
ABOUT THE PROPERTY

A spacious first floor modern two bedroom apartment situated in West Greenwich.

Greenwich DLR and mainline stations are considered a short walk away, as well as Greenwich park and town centre.



STEP INSIDE GREENWICH HIGH ROAD



Approximate Gross Internal Area
74.9 sq m / 806 sq ft

Greenwich
020 8815 2230

Energy Rating: B We aim to make our particulars both accurate and reliable. However, they are not guaranteed; nor do they form part of an offer or contract. If you require clarification on any points then please contact us, especially if you're traveling some distance to view. Please note that appliances and heating systems have not been tested and therefore no warranties can be given as to their good working order

MARSH &
PARSONS