



A three bedroom semi-detached house with generous rear gardens ideally located for families & commuters. The accommodation briefly comprises; entrance hall, sitting/dining room, kitchen and rear porch to the ground floor. The first floor provides; three good sized bedrooms, bathroom and separate cloakroom. Externally the gardens are open to the front with side access to the large rear garden which also benefits a brick built storage shed. With NO ONWARD CHAIN an internal viewing is highly recommended.

Viewing

Viewings Strictly by appointment with the sole selling agents Atwell Martin call or e-mail us today to confirm your appointment | 65 New Road, Chippenham, Wiltshire SN15 1ES

Situation - Chippenham

Chippenham itself has a wide range of amenities to include High Street retailers plus supermarkets and retail parks and, in addition, there is a leisure centre with indoor swimming pool, library, cinema and public parks. Chippenham also benefits from excellent schooling with numerous primary and three highly sought after secondary schools. For those wishing to commute there is also a regular main line rail service from Chippenham station to London (Paddington) and

the West Country and the M4 motorway is easily accessed via Junction 17 a few miles north of the town.

Property Information

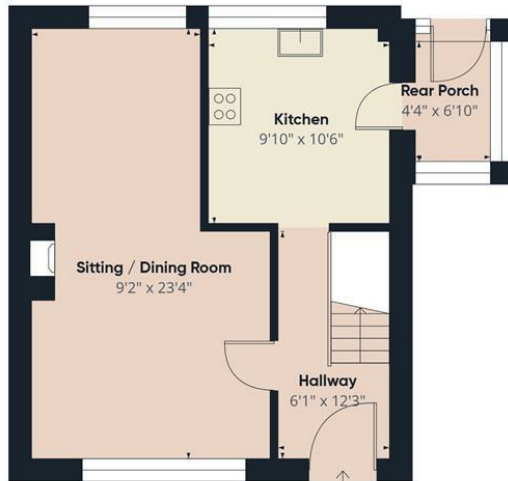
Utilities/Services - Mains Electric, Water & Drainage, Gas Central Heating

Wiltshire Council Tax - Band C

Tenure - Freehold







Ground Floor



Floor 1

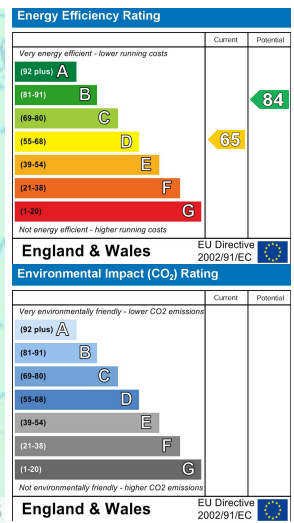
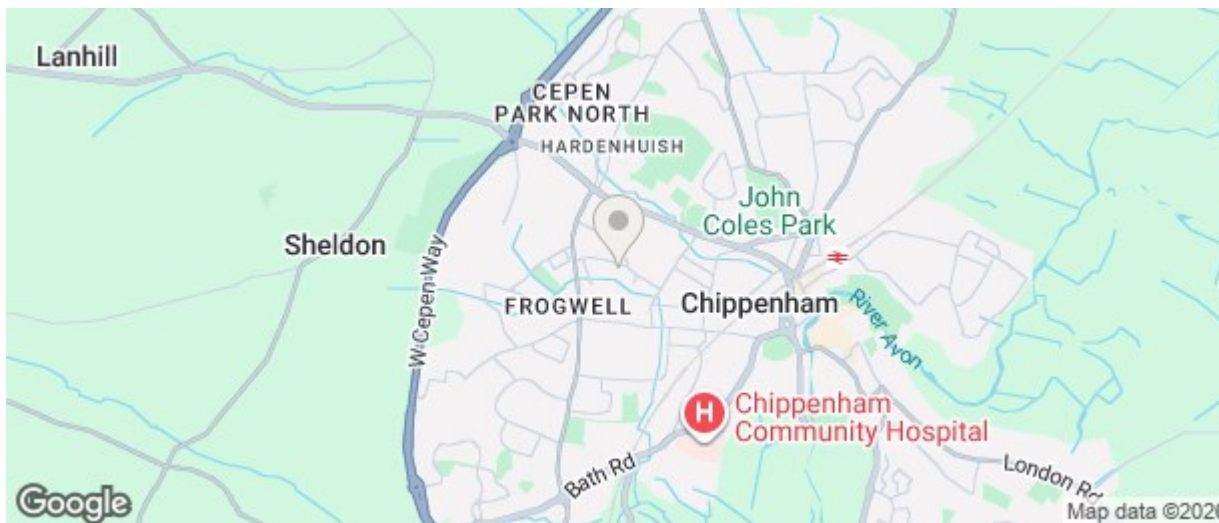
Approximate total area[®]
886 ft²

(1) Excluding balconies and terraces.

While every attempt has been made to ensure accuracy, all measurements are approximate, not to scale. This floor plan is for illustrative purposes only.

Calculations were based on RICS IPMS 3C standard. Please note that calculations were adjusted by a third party and therefore may not comply with RICS IPMS 3C.

GIRAFFE360



The particulars are set out as a general outline only for the guidance of intended purchasers or lessees, and do not constitute, any part of a contract. Nothing in these particulars shall be deemed to be a statement that the property is in good structural condition or otherwise nor that any of the services, appliances, equipment or facilities are in good working order. Purchasers should satisfy themselves of this prior to purchasing