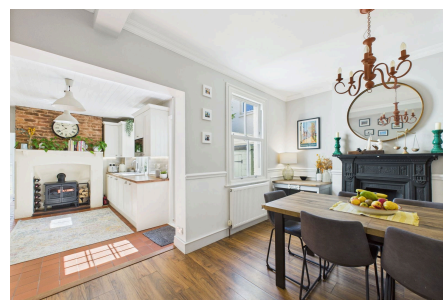


Bedford Road, Horsham

Guide Price £600,000

🛏 4 🚿 2 🚿 2

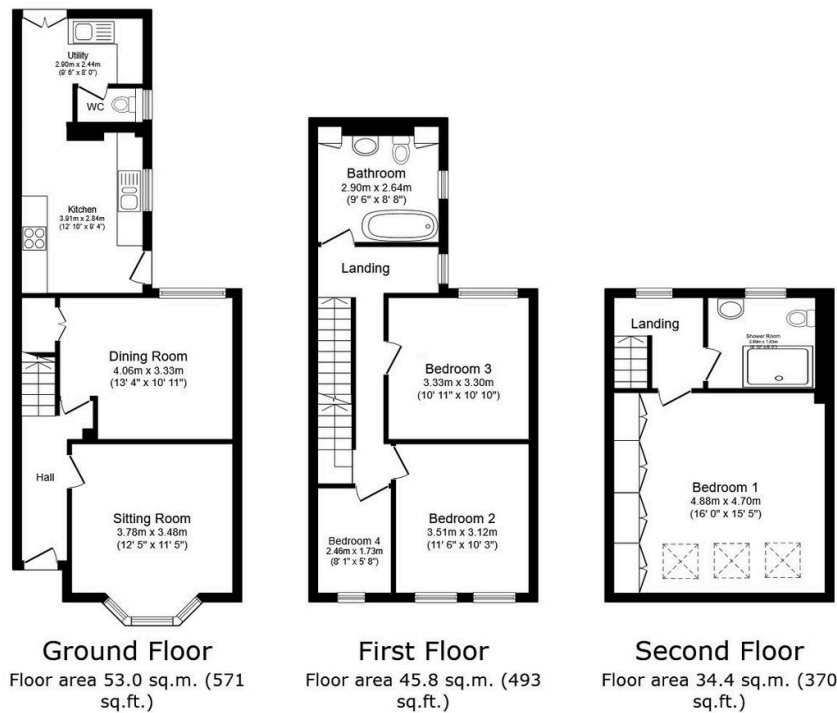


A beautifully presented Period Home close to Horsham Town & Station, boasting spacious Accommodation Over Three Floors, a stunning Principal Suite and a Luxurious Family Bathrooms.

Tenure: Freehold
Council Tax Band: D
EPC Rating: Current D - Potential C

Key Features

- Watch Our Video Tour
- Accommodation Over Three Floors
- Refitted Kitchen & 13ft Dining Room
- Shower Room To Principal Suite
- Four Bedrooms (Three Doubles)
- Stunning Period Home
- Bay Fronted Sitting Room
- Luxurious Family Bathroom
- Close To Town & Station
- Utility Room & WC



Total floor area: 133.1 sq.m. (1,433 sq.ft.)

This floor plan is for illustrative purposes only. It is not drawn to scale. Any measurements, floor areas (including any total floor area), openings and orientations are approximate. No details are guaranteed, they cannot be relied upon for any purpose and do not form any part of any agreement. No liability is taken for any error, omission or misstatement. A party must rely upon its own inspection(s). Powered by www.Propertybox.io