



*jordan fishwick*

**WEST DIDSBURY**  
Georgia Avenue



# Georgia Avenue, West Didsbury, M20 1LY

£1,200 Per Calendar Month



## The Property

\*\*\* AVAILABLE MAY \*\*\* A stylish, two double bedroom, ground floor apartment forming part of a popular purpose-built development with a great location in West Didsbury. Just a 'short stroll' from the Metrolink and an array of bars and restaurants off Burton Road, makes it perfectly suited to couples, single occupants or professional sharers alike. The apartment is thoughtfully laid out with a generous hallway, spacious open plan living kitchen area which extends over 21 ft with a range of fitted kitchen units, two double bedrooms with built-in wardrobes to both and a spacious bathroom with modern four-piece white suite. The bedrooms and bathroom are accessed from an inner hallway which also gives access to a large storage cupboard. There is an allocated off road parking space to the front of the development. Offered on a furnished basis. Contact our Didsbury office to view.

View our Virtual Tour Here - <https://youtu.be/B3JK3DN8G10>

EPC Rating D // Council Tax Band D

Notice - Please note we have not tested any apparatus, fixtures, fittings, or services. Interested parties must undertake their own investigation into the working order of these items. All measurements are approximate and photographs provided for guidance only.

## Directions

M20 1LY



Google Map data ©2026 Google

- Available May
- Two Double Bedrooms
- Ground Floor Apartment
- Furnished
- Open Plan Living Space over 21ft
- Ideal for Couples or Professional Sharers
- Close to Burton Rd & Metrolink
- Allocated Parking
- Council Tax Band D
- EPC Rating D

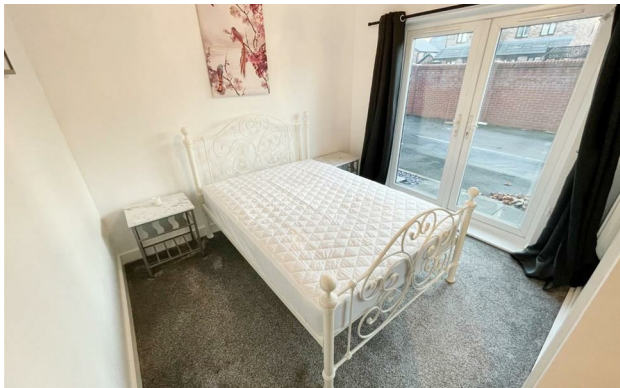
Postcode - M20 1LY

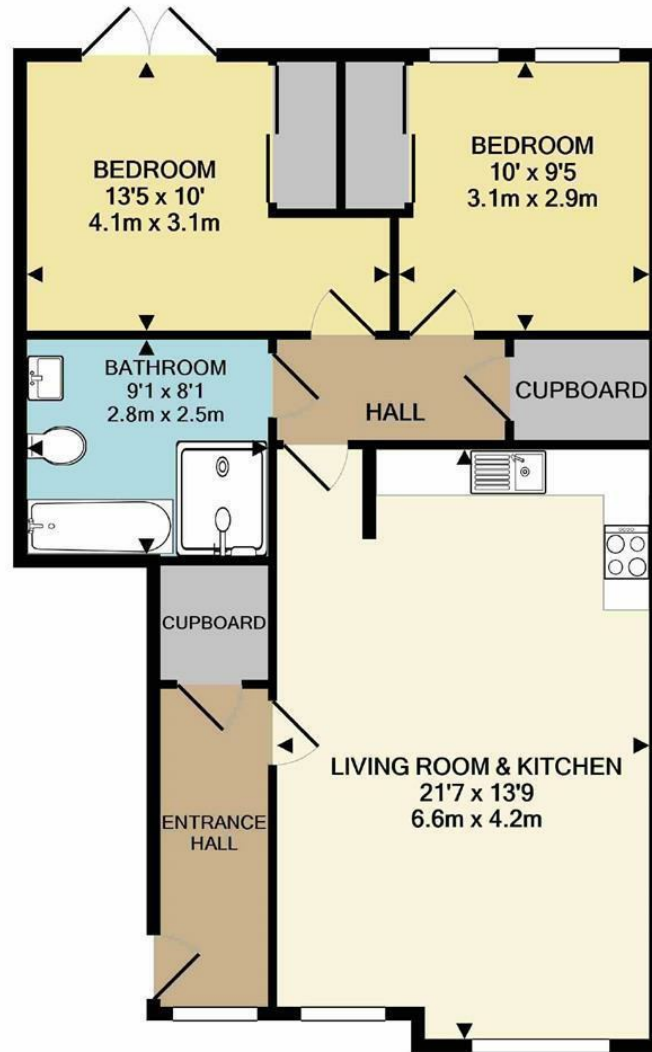
EPC Rating - D

Floor Area - sq ft

Local Authority - Manchester

Council Tax - D





TOTAL APPROX. FLOOR AREA 716 SQ.FT. (66.5 SQ.M.)  
 Measurements are approximate. Not to scale. Illustrative purposes only  
 Made with Metropix ©2020



These particulars are believed to be accurate but they are not guaranteed and do not form a contract. Neither Jordan Fishwick nor the vendor or lessor accept any responsibility in respect of these particulars, which are not intended to be statements or representations of fact and any intending purchaser or lessee must satisfy himself by inspection or otherwise as to the correctness of each of the statements contained in these particulars. Any floorplans on this brochure are for illustrative purposes only and are not necessarily to scale.

Offices also at: Wilmslow, Macclesfield, Hale, Sale, Chorlton, Glossop, Manchester & Salford

757-759 Wilmslow Road, Didsbury Village, Manchester

0161 445 4480

didsbury@jordandfishwick.co.uk  
 www.jordandfishwick.co.uk