

200 Wharfside Street , Birmingham, B1 1PT

Positioned on the PENTHOUSE floors of the iconic CUBE development, this exceptional one-bedroom apartment offers luxurious, contemporary, city living within one of Birmingham's most recognisable landmark buildings, moments from the Mailbox and the city's vibrant canal-side quarter.

The apartment is finished to an excellent standard throughout, featuring a high-specification fitted kitchen with granite work surfaces and fully integrated appliances, flowing seamlessly into a stylish open-plan lounge and dining area. A full-height picture window provides impressive views across the Mailbox and Birmingham city skyline, flooding the apartment with natural light and creating a striking urban backdrop.

The double bedroom benefits from built-in wardrobes, while the modern, stylish bathroom is finished with contemporary fittings. Underfloor heating runs throughout, further enhancing the apartment's clean, modern aesthetic.

Guide price £165,000

200 Wharfside Street , Birmingham, B1 1PT



- One-Bedroom Penthouse Apartment - NO CHAIN
- Underfloor heating throughout
- Full-height picture window with city skyline & Mailbox views
- Europe's largest underground robotic secure car park (annual licence)
- Iconic Cube development
- High-spec kitchen with granite worktops & integrated appliances
- Double bedroom with built-in wardrobes
- Private concierge & 24-hour security
- Open-plan lounge / dining area
- Contemporary stylish bathroom

Entrance Hall

Lounge/Diner

12'11" x 11'1" (3.95 x 3.39)

Kitchen

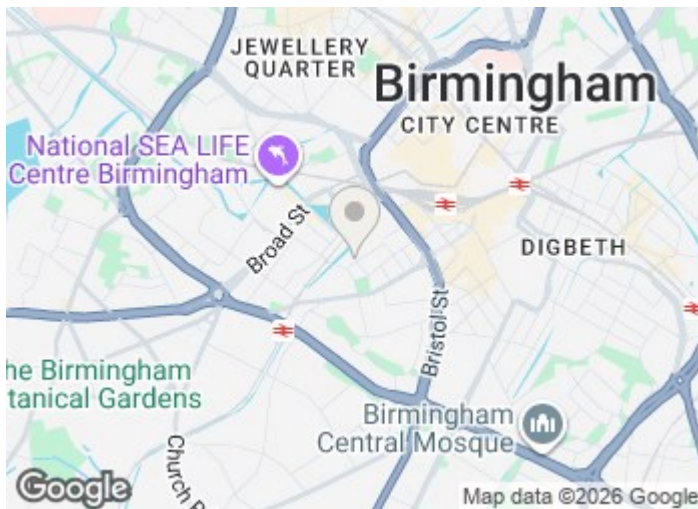
7'8" x 7'7" (2.34 x 2.32)

Bedroom

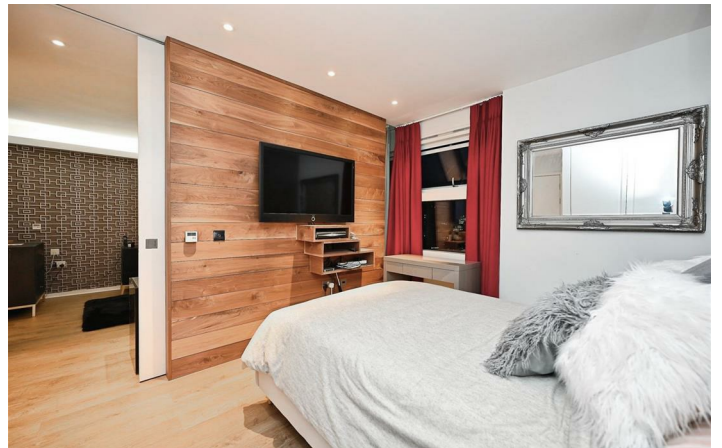
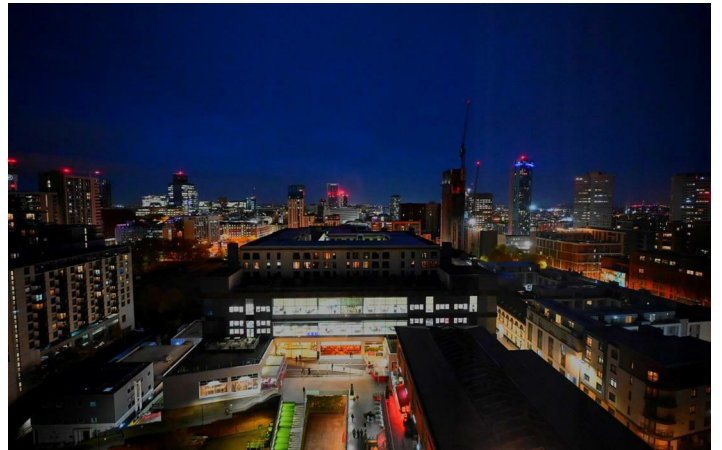
13'2" x 9'1" (4.03 x 2.79)

Bathroom

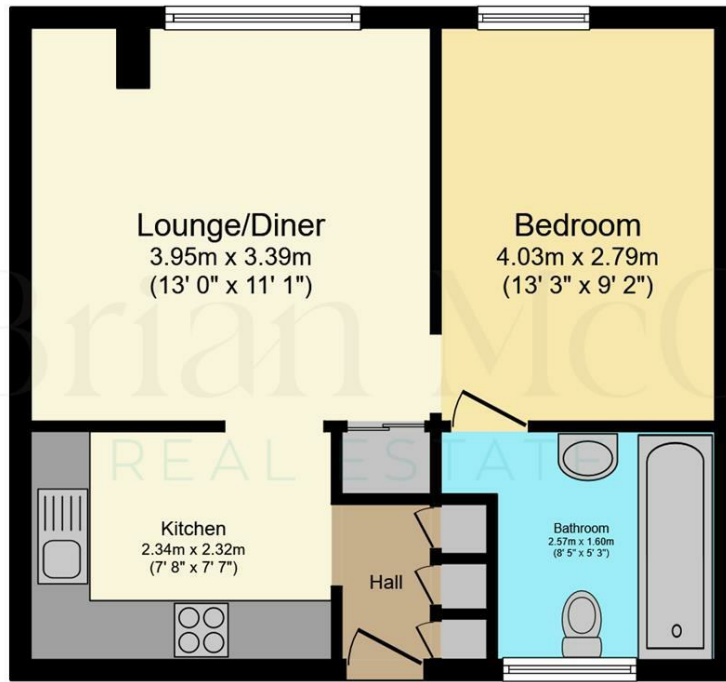
8'5" x 5'2" (2.57 x 1.60)



[Directions](#)



Floor Plan



Floor Plan
Floor area 44.7 sq.m. (481 sq.ft.)

Total floor area: 44.7 sq.m. (481 sq.ft.)

This floor plan is for illustrative purposes only. It is not drawn to scale. Any measurements, floor areas (including any total floor area), openings and orientations are approximate. No details are guaranteed, they cannot be relied upon for any purpose and do not form any part of any agreement. No liability is taken for any error, omission or misstatement. A party must rely upon its own inspection(s). Powered by www.Propertybox.io

These particulars, whilst believed to be accurate are set out as a general outline only for guidance and do not constitute any part of an offer or contract. Intending purchasers should not rely on them as statements of representation of fact, but must satisfy themselves by inspection or otherwise as to their accuracy. No person in this firm's employment has the authority to make or give any representation or warranty in respect of the property.

