



Upper Ground, SE1 £700,000

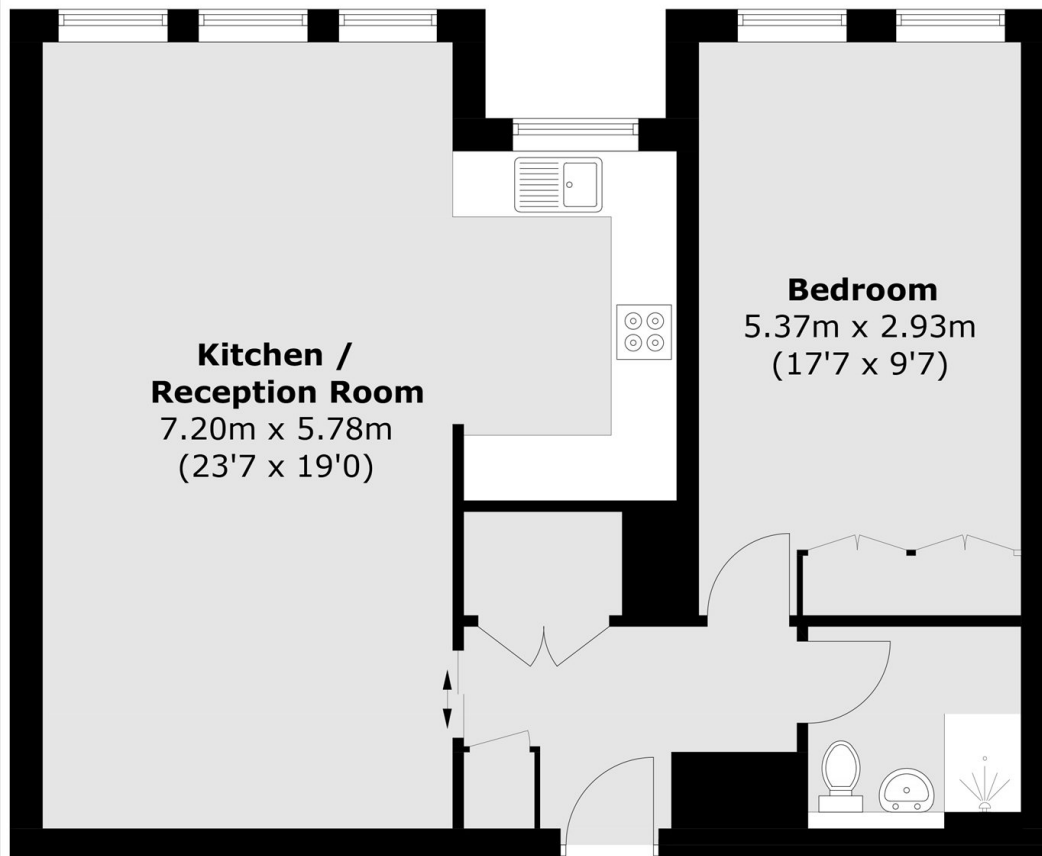
A highly attractive, fully refurbished seventh-floor flat in an iconic riverside development, featuring a bright southerly aspect, a spacious open-plan living room and kitchen, a generous double bedroom, a stylish three-piece shower-room, plus secure off-street parking, communal terraces, and a 24-hour concierge. Offers in excess of £700,000

Enviably situated along the River Thames in London's vibrant South Bank, this location places you at the heart of the city's cultural scene. Moments away are iconic attractions including the Tate Modern, Shakespeare's Globe, and Borough Market, with excellent transport links via Blackfriars, Waterloo, Southwark, and London Bridge stations nearby.

Features

- Offers in excess of £700,000
- Riverside Development
- Fully Refurbished
- Long Extended Lease
- Secure Underground Parking
- 24 Hour Concierge
- Chain Free Sale

Upper Ground, London, SE1



Total area (approx.): 62.3 sq. m (670.6 sq. ft)