



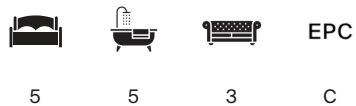
REDINGTON ROAD,

London NW3



# AN EXCEPTIONAL MODERN RESIDENCE IN HAMPSTEAD

A remarkable home situated on one of Hampstead's most prestigious roads, offering exceptional living, leisure and family accommodation across beautifully designed spaces.



5

5

3

C

Local Authority: London Borough of Camden

Council Tax band: H

Furniture: Optional

Minimum length of tenancy: 12 months

Deposit amount: £60,000

Available date: 02/04/2026

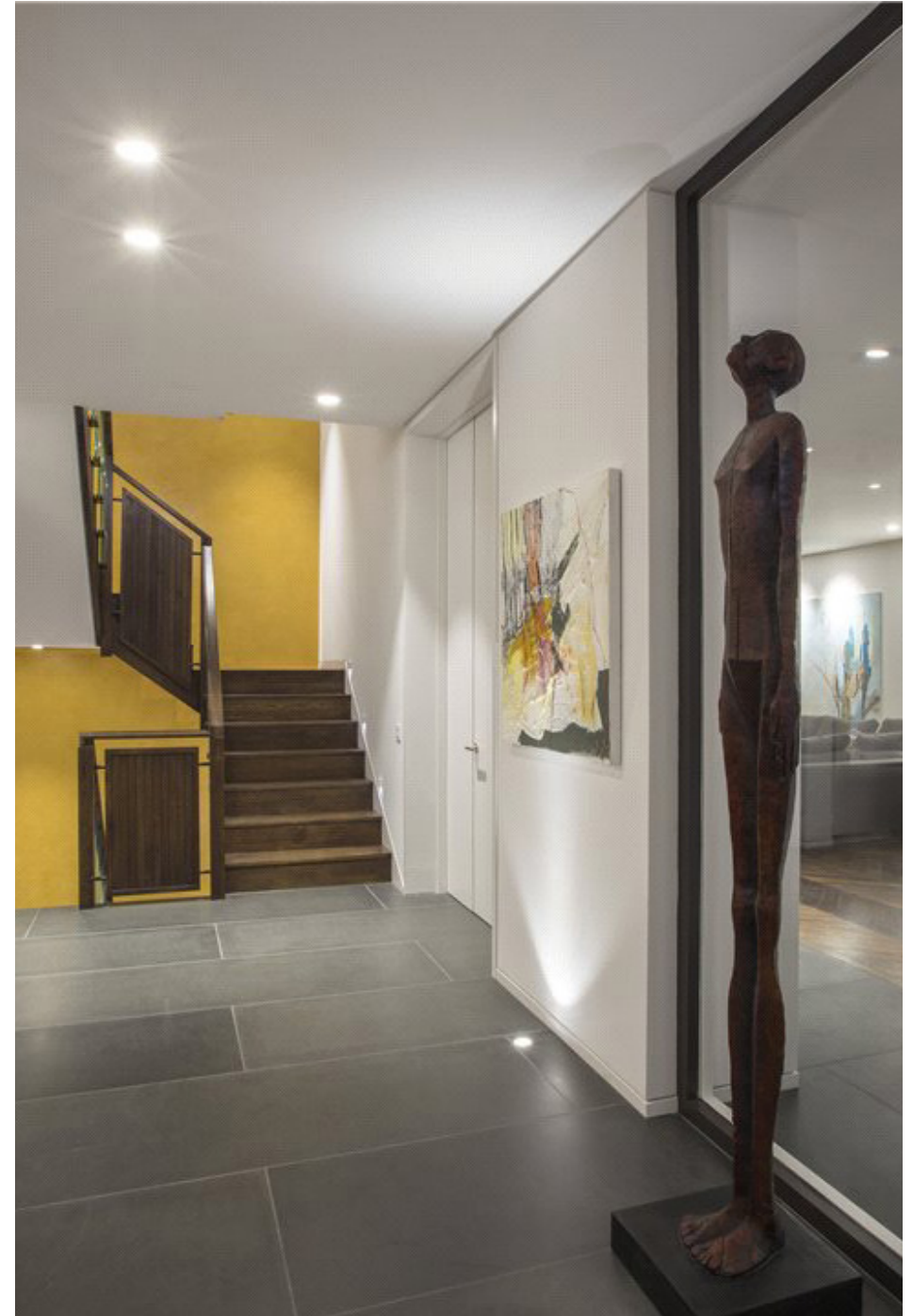
**Guide price: £10,000 per week**



## THE HEART OF THE HOME

The main living spaces are beautifully designed to offer both sophistication and comfort. The kitchen serves as a striking centrepiece, featuring a large sculptural island, sleek contemporary cabinetry, and seamlessly integrated appliances. Its generous proportions and refined finishes make it ideal for everyday living as well as more formal entertaining.

The adjoining living room is bright and inviting, enhanced by full-height glazing, warm timber flooring, and a contemporary fireplace that creates an elegant focal point. The dining room continues this theme of understated luxury, with high ceilings, modern lighting, and a harmonious connection to the kitchen and living areas. Designed for both intimate meals and larger occasions, it forms an impressive setting that elevates the home's overall sense of style and cohesion.







## ENTERTAINMENT SPACES & STUDY

The property offers an exceptional collection of entertainment and leisure spaces. The cinema room provides a fully immersive experience, with bespoke acoustic finishes and luxurious seating that create the perfect environment for film nights. Adjacent to this, the games room offers a versatile area for leisure and display, enhanced by contemporary lighting and beautifully finished timber flooring that brings warmth to the space.

The spa level is a standout feature of the home, incorporating a serene indoor swimming pool, jacuzzi and relaxation zones, all arranged with refined lighting and a calm, contemporary palette. A bright, well-equipped gym sits nearby, offering an inspiring setting for daily exercise and wellbeing.

Completing this suite is the study, a sophisticated and quietly impressive room with bespoke joinery, illuminated shelving and rich materials that create an ideal environment for focused work or private reading. Together, these carefully curated spaces elevate the property's lifestyle offering, blending comfort, luxury and practicality with remarkable attention to detail.

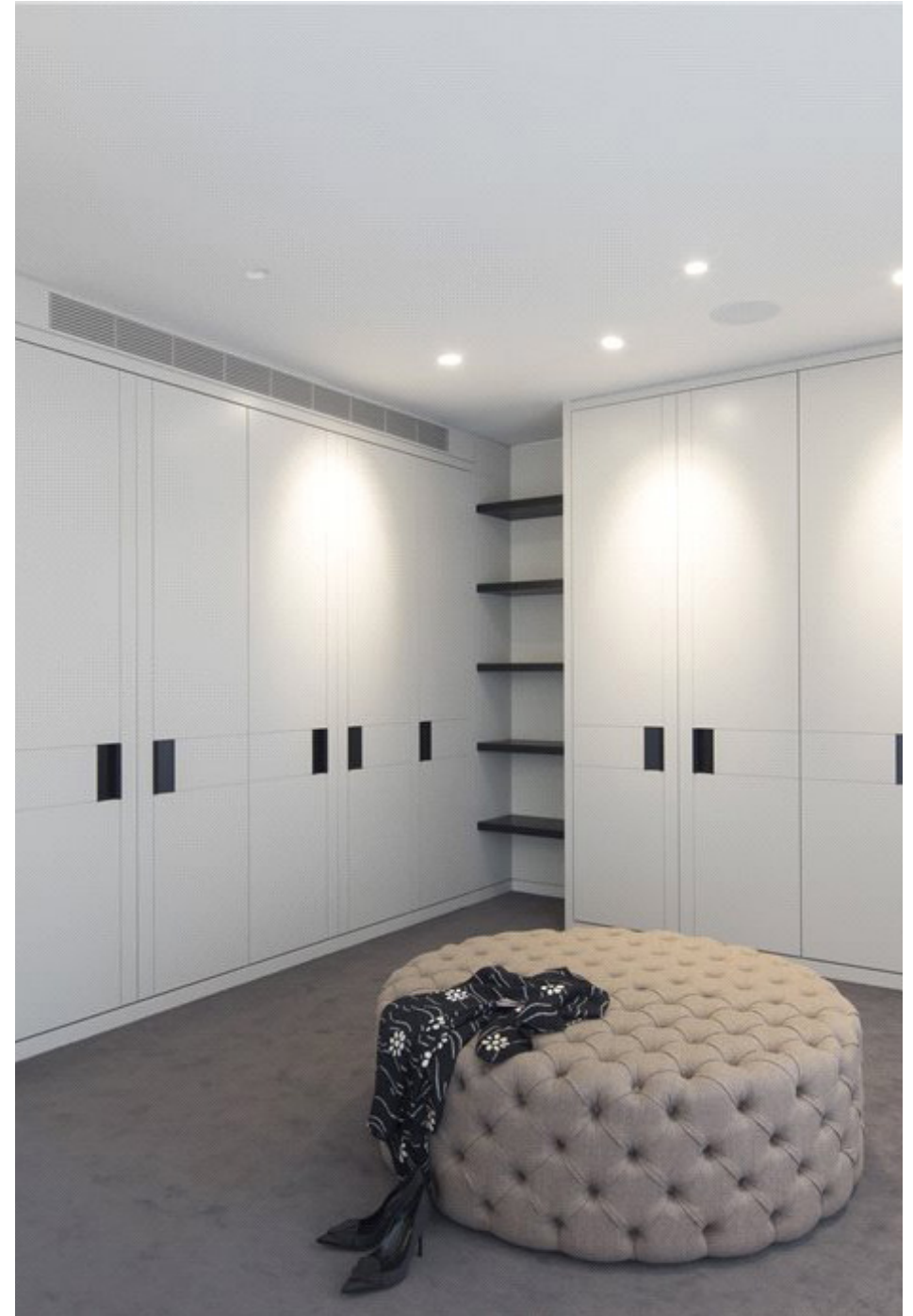


## THE PRINCIPAL SUITE & FAMILY BEDROOMS

The upper floors are devoted to a beautifully arranged collection of bedroom suites, each designed to offer exceptional privacy, comfort and natural light. The principal suite commands a prominent position within the house, featuring a private terrace that opens to tranquil views, a superbly finished en-suite bathroom and extensive wardrobe space that enhances both luxury and practicality.

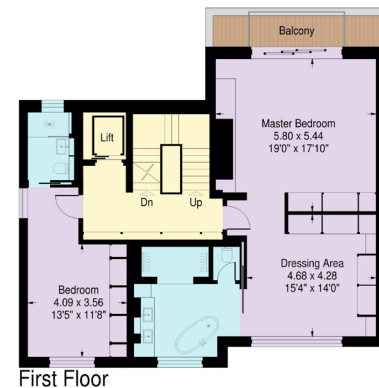
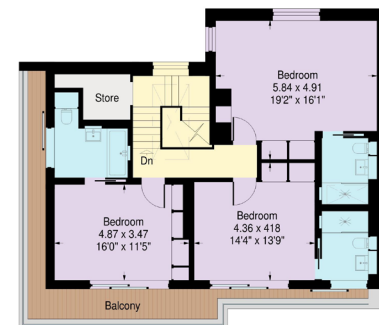
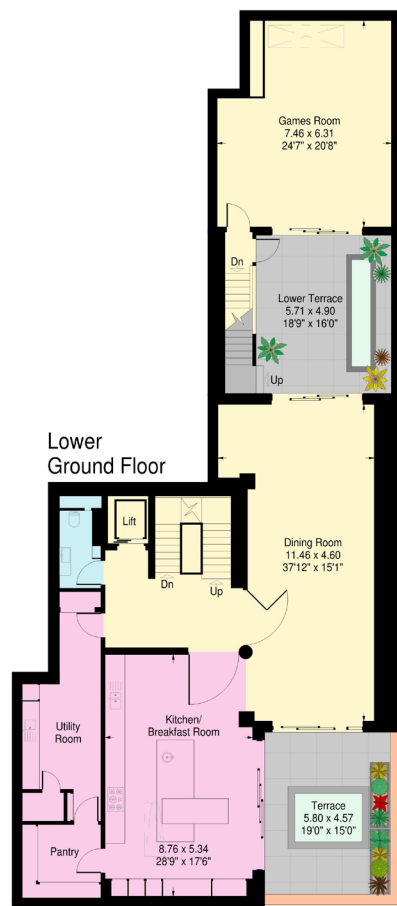
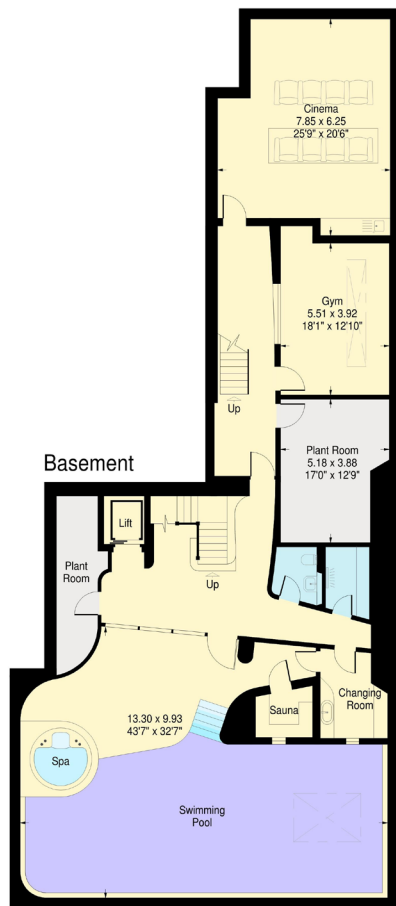
The additional bedrooms are generous in proportion and finished with the same refined contemporary palette, offering an ideal blend of sophistication and warmth. Each room benefits from thoughtfully designed storage and is served by high-quality bathrooms with elegant materials and understated modern detailing. The layout provides excellent flexibility for family and guests while maintaining a clear sense of separation between living and sleeping areas.

Wide, softly lit landings form graceful transitions between rooms, complemented by glass balustrades and clean architectural lines that echo the property's modern design language. Together, these elements create an upper floor environment that is serene, beautifully balanced and perfectly suited to both family life and quiet retreat.









Approximate Gross Internal Area = 832.8 sq m / 8964 sq ft

This plan is for layout guidance only. Not drawn to scale unless stated. Windows and door openings are approximate. Whilst every care is taken in the preparation of this plan, please check all dimensions, shapes and compass bearings before making any decisions reliant upon them. (ID767266)

We would be delighted  
to tell you more.

**Robert Lerner**  
020 7317 7960  
robert.lerner@knightfrank.com

**Knight Frank Hampstead**  
58-62 Heath Street,  
London NW3 1EN

Your partners in property

[knightfrank.co.uk](https://www.knightfrank.co.uk)

1. Particulars: These particulars are not an offer or contract, nor part of one. You should not rely on statements given by Knight Frank in the particulars, by word of mouth or in writing ("information") as being factually accurate about the property, its condition or its value. Neither Knight Frank nor any joint agent has any authority to make any representations about the property, and accordingly any information given is entirely without responsibility on the part of Knight Frank. 2. Material Information: Please note that the material information above is provided to Knight Frank by third parties and is provided here as a guide only. Some of the information provided (such as the rent, deposit or length of tenancy) is subject to change, depending on offers received by the landlord. While Knight Frank has taken steps to verify this information, we advise you to confirm the details of any such material information prior to any offer for the tenancy being submitted. If we are informed of changes to this information by the landlord, we will use reasonable endeavours to update this as soon as practical. 3. Photos, Videos etc: The photographs, property videos and virtual viewings etc. show only certain parts of the property as they appeared at the time they were taken. Areas, measurements and distances given are approximate only. 4. Fixtures and fittings: Carpets, curtains, light fittings and other items fixed to the property (and not fixed to the property) belonging to the landlord are included in any tenancy as evidenced in the inventory, unless specifically noted otherwise. All those items regarded as tenant's fixtures and fittings, are specifically excluded from any tenancy and will not be evidenced in the inventory. 5. Deposit: All potential tenants should be advised that, as well as rent a holding deposit will be payable which is equal to one week's rent (if an AST) and two weeks' rent (if not an AST), a tenancy deposit will also be payable which is equal to 6 weeks rent (if not an AST and/or the annual rent is over £50,000), or 5 weeks' rent (if an AST and/or the annual rent is below £50,000). If the landlord agrees to you having a pet you may be required to pay a higher deposit (if not an AST) or higher weekly rent (if an AST). An administration fee of £288 and referencing fees of £60 per person will also apply when renting a property (if not an AST). (All fees shown are inclusive of VAT.) For other fees that might apply, please ask us or visit [www.knightfrank.co.uk/tenantfees](https://www.knightfrank.co.uk/tenantfees). 6. To find out how we process Personal Data, please refer to our Group Privacy Statement and other notices at <https://www.knightfrank.com/legals/privacy-statement>.

Particulars dated May 2024. Photographs and videos dated March 2024. All information is correct at the time of going to print. Knight Frank is the trading name of Knight Frank LLP. Knight Frank LLP is a limited liability partnership registered in England and Wales with registered number OC305934. Our registered office is at 55 Baker Street, London W1U 8AN. We use the term 'partner' to refer to a member of Knight Frank LLP, or an employee or consultant. A list of members names of Knight Frank LLP may be inspected at our registered office. If you do not want us to contact you further about our services then please contact us by either calling 020 3544 0692, email to [marketing.help@knightfrank.com](mailto:marketing.help@knightfrank.com) or post to our UK Residential Marketing Manager at our registered office (above) providing your name and address.