

Unit 6 13 Burton Place, Manchester, Lancashire, M15 4PT

Tel: 0161 637 8336

Email: [contactus@ascendproperties.com](mailto:contactus@ascendproperties.com)

[www.ascendproperties.com](http://www.ascendproperties.com)

# Ascend

Built on higher standards



## Elizabeth Tower, Chester Road, Manchester

£1,850 PCM

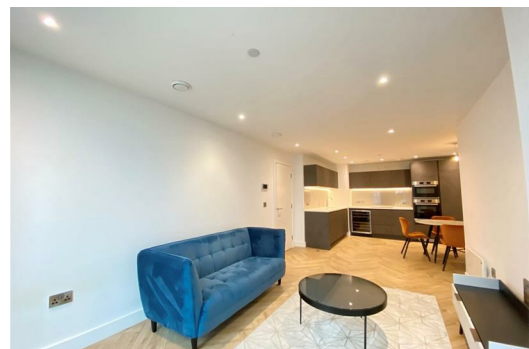
Situated within the prestigious Elizabeth Tower development, this exceptional two-bedroom apartment on the 25th floor offers luxury city living with stunning panoramic views across the Manchester skyline. Combining elegant interiors, spacious accommodation and outstanding resident facilities, this is a fantastic opportunity to enjoy one of the city's most sought-after addresses.

The apartment is beautifully presented throughout and comes fully furnished to a high standard. At its heart is a spacious open-plan living, dining and kitchen area, creating the perfect space for both relaxing and entertaining. Floor-to-ceiling windows allow plenty of natural light to flood the apartment while showcasing impressive city views. The contemporary kitchen is fitted with integrated appliances and sleek modern finishes.

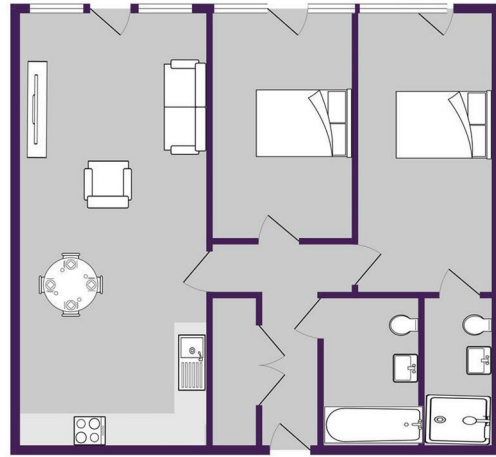
There are two generously sized double bedrooms, including a master bedroom benefitting from a stylish en-suite shower room. A separate modern bathroom serves the remainder of the apartment, making the property ideal for professionals or a couple.

Elizabeth Tower is renowned for its unrivalled resident amenities, offering an exceptional lifestyle experience in the heart of Manchester. Residents enjoy exclusive access to the spectacular 44th-floor swimming pool, one of the highest residential swimming pools in Western Europe, together with a state-of-the-art gymnasium, the beautifully landscaped Royal Garden, residents' lounge, communal hub and dedicated co-working spaces.

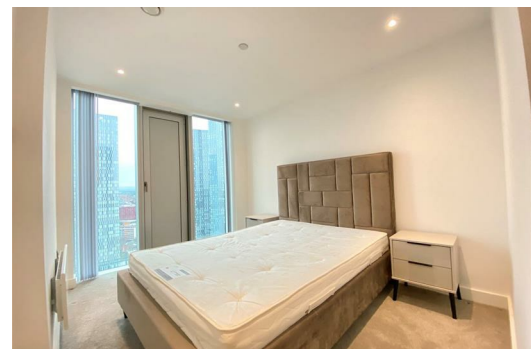
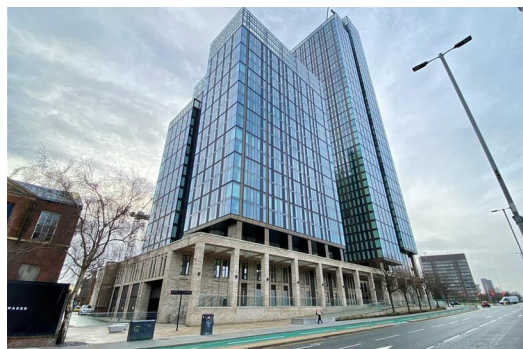
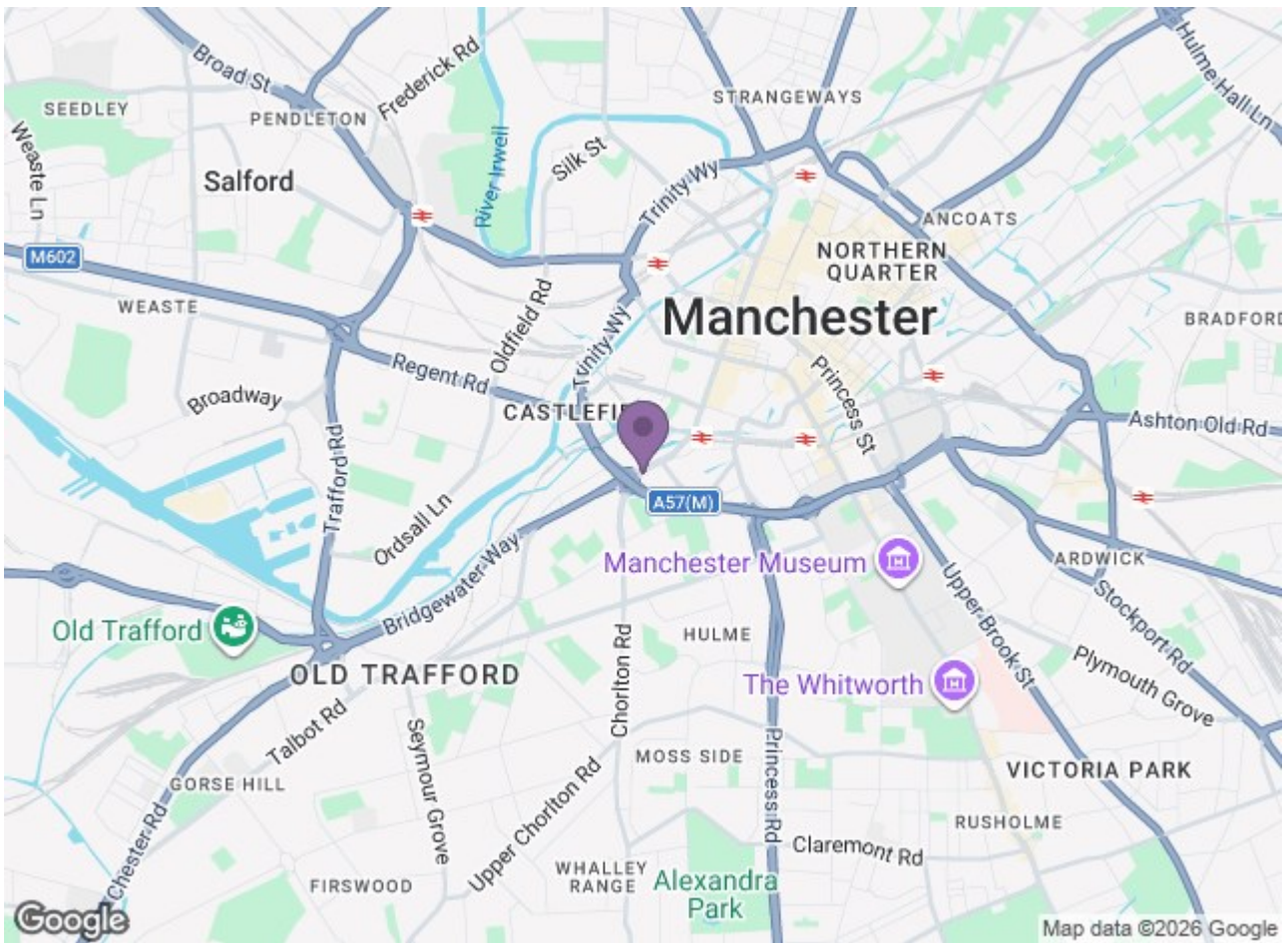
Perfectly positioned on Crown Street, Elizabeth Tower is located at the gateway to Manchester City Centre & within easy walking distance of Deansgate, Spinningfields and Castlefield. Residents can enjoy award-winning restaurants, trendy bars, independent cafés and retail destinations right on their doorstep. Excellent transport links are also close by, with Manchester Oxford Road, Deansgate Station and the Metrolink network providing convenient access across Manchester and beyond.



806 sq.ft. (74.9 sq.m.) approx.



TOTAL FLOOR AREA: 806 sq.ft. (74.9 sq.m.) approx.  
 While every effort has been made to ensure the accuracy of the floor plan, measurements of floor, ceiling, and any other items are approximate and no responsibility is taken for any error, omission or misstatement. This plan is for general guidance only and should be used as a guide only. It is not intended to be used as a contract or to be used as a basis for any legal proceedings. All dimensions are to the center of the walls unless otherwise stated and are given to the nearest square foot or square meter.



Energy Efficiency Rating		Environmental Impact (CO <sub>2</sub> ) Rating	
Current	Potential	Current	Potential
85	85	G	G

**Ascend**  
 Built on higher standards