



44B, Norfolk Road, Sheffield, S2 2SY

# 44B, Norfolk Road

## Sheffield, S2 2SY

### Description

Nestled in the sought-after S2 area of Sheffield, this beautifully appointed ground floor flat on Norfolk Road offers a unique blend of comfort and modern living. Spanning 626 square feet, this two double bedroom apartment is perfect for those seeking a stylish yet practical home.

Upon entering, you will be greeted by a light-filled living room that exudes warmth and charm, making it an ideal space for relaxation or entertaining guests. The modern fitted kitchen, complete with an additional utility area, showcases high specifications that cater to both functionality and aesthetics. The property also features two well-proportioned reception rooms, providing ample space for various activities.

One of the standout features of this apartment is the delightful rear conservatory, which seamlessly connects the indoor and outdoor spaces, allowing for an abundance of natural light. Step outside to discover a charming courtyard-style garden, perfect for enjoying a morning coffee or hosting summer gatherings.

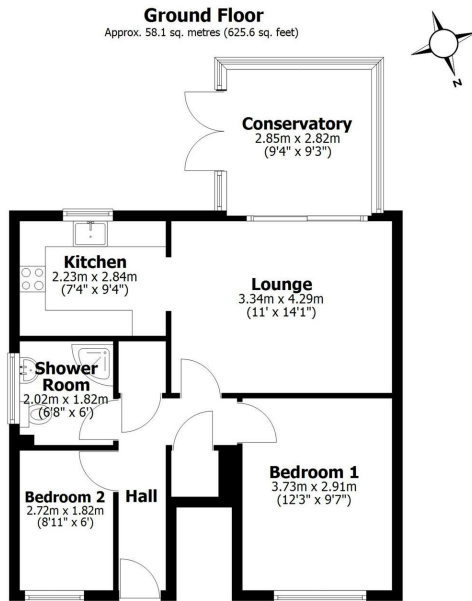
For your convenience, the property includes allocated parking for one vehicle, along with additional on-street parking options. Built in 1982, this flat combines contemporary living with the character of a well-established neighbourhood.

Located near the picturesque Norfolk Heritage Park, this property is not only a home but a lifestyle choice, offering easy access to green spaces and local amenities. This ground floor apartment is truly an absolute delight in an ever-desirable location, making it a must-see for potential buyers or renters alike.

- Two bedroom, ground floor apartment near to Norfolk Park
- Walking distance to City Centre, train & bus stations
- Modern kitchen with additional utility room
- Off road allocated parking, as well as on-street parking nearby
- Council Tax Band: A. EPC Rating: 73 C
- Superb bathroom with contemporary tiling
- Bright living room with conservatory attached
- Charming courtyard garden
- Updated throughout - a great first time purchase!
- Viewing highly recommended







Total area: approx. 58.1 sq. metres (625.6 sq. feet)

All measurements are approximate  
Yorkshire EPC & Floor Plans Ltd  
Plan produced using Planip.

**44b Norfolk Road**



**Bakewell**  
3 Royal Oak Place  
Matlock Street  
Bakewell DE45 1HD  
T: 01629 700699  
E: bakewell@elr.co.uk

**Banner Cross**  
888 Ecclesall Road  
Banner Cross  
Sheffield S11 8TP  
T: 01142 683388  
E: bannercross@elr.co.uk

**Dore**  
33 Townhead Road  
Sheffield  
S17 3GD  
T: 0114 2362420  
E: dore@elr.co.uk

**Hathersage**  
Main Road, Hathersage  
Hope Valley  
Derbyshire S32 1BB  
T: 01433 651888  
E: peakdistrict@elr.co.uk

**Rotherham**  
149 Bawtry Road  
Wickersley  
Rotherham S66 2BW  
T: 01709 917676  
E: wickersley@elr.co.uk

**EADON  
LOCKWOOD  
& RIDDLE**  
ESTD 1840