



Symonds  
& Sampson

# Jancris

4 Bibberne Row, Lower Road, Stalbridge, Sturminster Newton, Dorset

# Jancris

4 Bibberne Row, Lower Road  
Stalbridge  
Sturminster Newton  
Dorset DT10 2NL

A detached bungalow on a quiet no-through lane in need of modernising with extensive back garden of over a third of an acre.



- Spacious detached bungalow
- Opportunity to modernise and improve
- Scope to extend subject to necessary consents
  - Large garden. In all 0.32 acres
  - Popular small town with amenities
    - No onward chain



Guide Price £425,000

Freehold

Sturminster Sales  
01258 473766  
sturminster@symondsandsampson.co.uk



## THE DWELLING

Jancris is a detached bungalow believed to have been built in the 1960s of brick and block elevations. It is found towards the end of a peaceful no-through lane with only a small number of other properties around. The bungalow occupies a very good sized plot with ample parking and garage at the front and large garden to the rear. The bungalow would now benefit from a programme of modernisation and has tremendous potential for an incoming buyer to put their own stamp on it and potentially extend, subject to the necessary consents.

## ACCOMMODATION

See floorplan.

Ground floor - Hall, sitting room, kitchen/breakfast room, 3 bedrooms, bathroom.

## OUTSIDE

The property is approached from Bibberne Row (private road) on to a drive with parking for two cars in front of the double garage with up and over doors, power and light. There is a front garden, laid to lawn with the main garden being at the back and laid to lawn with the whole measuring 0.32 acres.

## SITUATION

Stalbridge is Dorset's smallest town with a busy traditional High Street with many shops and businesses including post office, butcher, hairdresser, dentist, cycle shop and busy local supermarket. Many businesses are second or third generation family run and help to provide an excellent community which also has a church and primary school. The market town of Sturminster Newton is approximately 6 miles to the south and the larger towns of Shaftesbury, Sherborne and Wincanton are within a 20 minute drive. Road links are excellent with the A30 at Henstridge and A303 at Wincanton and Templecombe (3.5 miles) has a mainline railway to London Waterloo. The surrounding area has an abundance of good quality schools and some of the finest countryside with excellent walking, cycling and riding. The coast at Bournemouth/Poole is within an hour's drive.

## DIRECTIONS

What3words:///scooters.soft.bland

## SERVICES

Mains water, electricity and drainage are connected to the property. Oil fired central heating system.

## MATERIAL INFORMATION

Standard, superfast & ultrafast broadband is available.

There is mobile coverage in the area, please refer to Ofcom's website for more details.

(Ofcom <https://www.ofcom.org.uk>)

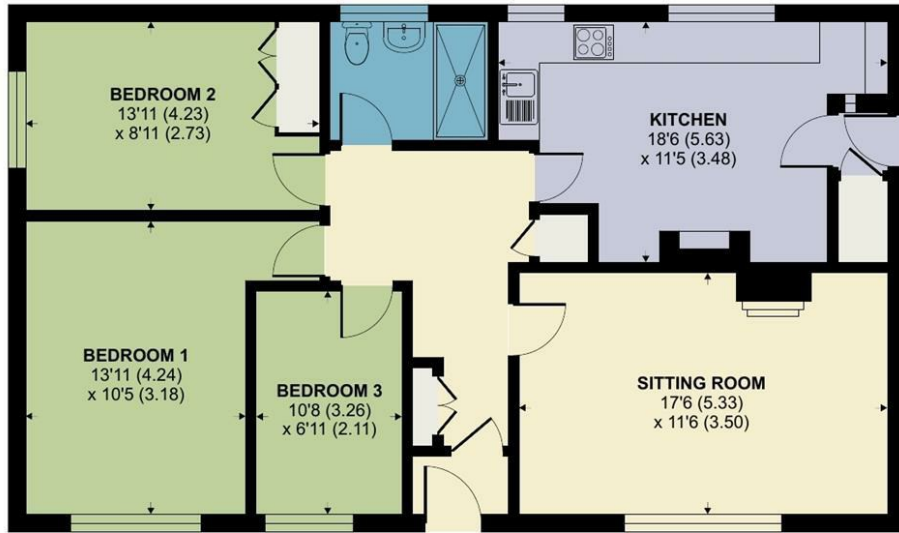
Council Tax Band: D

Restrictive Covenants: A covenant will restrict the use of the site to one single storey dwelling.

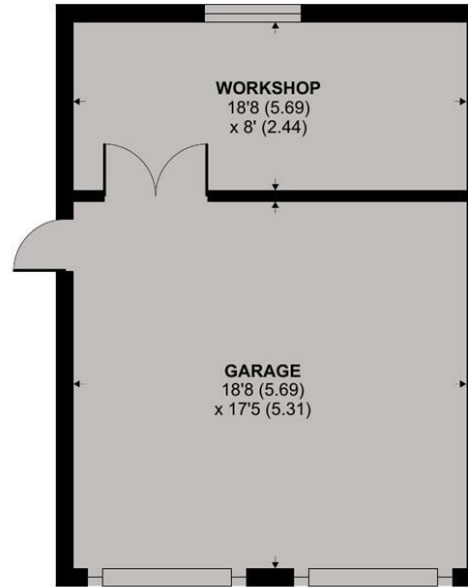


# Stalbridge, Sturminster Newton

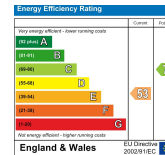
Approximate Area = 955 sq ft / 88.7 sq m  
 Garage = 484 sq ft / 45 sq m  
 Total = 1439 sq ft / 133.7 sq m  
 For identification only - Not to scale



GROUND FLOOR



Floor plan produced in accordance with RICS Property Measurement 2nd Edition, Incorporating International Property Measurement Standards (IPMS2 Residential). © nichecom 2025. Produced for Symonds & Sampson. REF: 1371565



GWB October 2025



01258 473766

sturminster@symondsandsampson.co.uk  
 Symonds & Sampson LLP  
 Agriculture House, Market Place,  
 Sturminster Newton, Dorset DT10 1AR



Important Notice: Symonds & Sampson LLP and their Clients give notice that: 1. They have no authority to make or give any representations or warranties in relation to the property. These particulars do not form part of any offer or contract and must not be relied upon as statements or representations of fact. 2. Any areas, measurements or distances are approximate. The text, photographs and plans are for guidance only and are not necessarily comprehensive. It should not be assumed that the properties have all necessary planning, building regulation or other consents and Symonds and Sampson LLP have not tested any services, equipment or facilities. 3. We have not made any investigation into the existence or otherwise of any issues concerning pollution of the land, air or water contamination and the purchaser is responsible for making his/her own enquiries in this regard. 4. The property is sold subject to and with the benefit of all existing wayleaves, easements and rights of way whether public or private, specifically mentioned or not. The vendors shall not be required to define any such rights, privileges or advantages.

**SALES | LETTINGS | AUCTIONS | FARMS & LAND | COMMERCIAL | NEW HOMES | PLANNING & DEVELOPMENT**