

Bucklers Road, Priddy's Hard,
Gosport, Hampshire, PO12 4LT

£299,995



Middle Terraced House

Lounge & Kitchen / Dining Room

Main Bedroom With En-Suite Shower
Room

Parking Space To Front

Cul-De-Sac Location Overlooking Railed
Lawn Area

Three Bedrooms

Double Glazed Conservatory

PVCu Double Glazing

Bathroom With White Suite

Garage Nearby To Rear

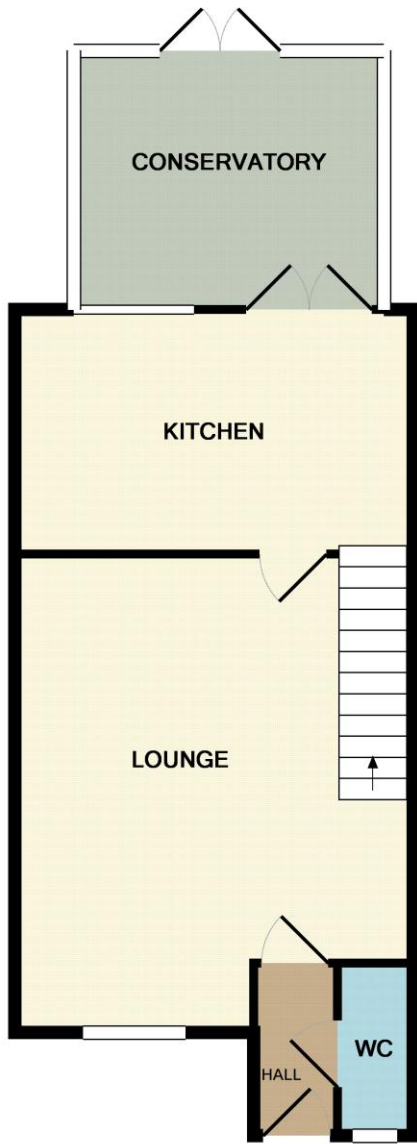
023 9258 5588

6 Stokesway, Stoke Road, Gosport, Hants, PO12 1PE

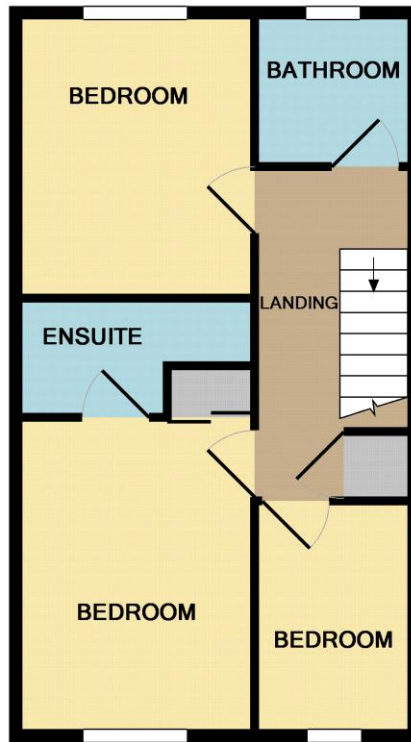
Email: office@dimon-estate-agents.co.uk

To view all our properties visit:

www.GosportProperty.com



GROUND FLOOR



1ST FLOOR

Whilst every attempt has been made to ensure the accuracy of the floor plan contained here, measurements of doors, windows, rooms and any other items are approximate and no responsibility is taken for any error, omission, or mis-statement. This plan is for illustrative purposes only and should be used as such by any prospective purchaser. The services, systems and appliances shown have not been tested and no guarantee as to their operability or efficiency can be given
 Made with Metropix ©2011

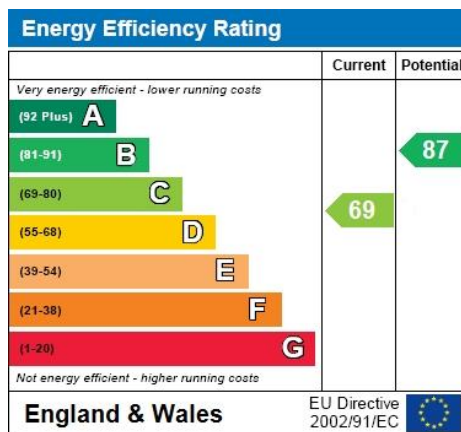
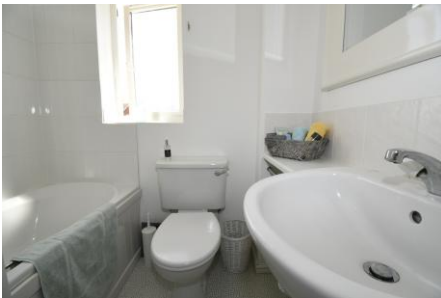


**SELLING YOUR OWN PROPERTY IN GOSPORT?
 WE ARE A FAMILY RUN BUSINESS SELLING HOMES IN GOSPORT FOR 55 YEARS
 AND WOULD WELCOME THE OPPORTUNITY TO BE CHOSEN AS YOUR ESTATE AGENT**

Entrance Hall	Composite front door, radiator, laminate flooring.
Cloakroom	Vanity hand basin, low level W.C., radiator, PVCu double glazed window, laminate flooring.
Lounge	17'7" (5.36m) x 14'7" (4.45m) PVCu double glazed window, 2 radiators, understairs cupboard, stairs to first floor.
Kitchen / Dining Room	14'6" (4.42m) x 8'11" (2.72m) 1½ bowl stainless steel sink unit, wall and base cupboards with worksurface over, built in oven and 4 ring induction hob, cooker extractor canopy, space for fridge/freezer, plumbing for washing machine, tiled splashbacks, wall mounted gas central heating boiler concealed within cupboard, double radiator, PVCu double glazed window and French doors to:
Conservatory	11'2" (3.4m) x 8'10" (2.69m) PVCu double glazed French doors and windows, polycarbonate roof, ceramic tiled floor.
ON THE 1ST FLOOR	
Landing	Access to loft space, airing cupboard.
Bedroom 1	11'5" (3.48m) To Wardrobe x 8'5" (2.57m) PVCu double glazed window, built in mirror fronted wardrobe, radiator.
En-Suite Shower Room	White suite of shower cubicle, vanity hand basin, low level W.C., radiator, tiled splashbacks, extractor fan.
Bedroom 2	10'6" (3.2m) x 8'1" (2.46m) PVCu double glazed window, radiator.
Bedroom 3	8'7" (2.62m) x 5'9" (1.75m) PVCu double glazed window, radiator, fitted shelving unit.
Bathroom	White suite of panelled bath with mixer tap and shower attachment, low level W.C., vanity hand basin with cupboard under, radiator, tiled splashbacks, PVCu double glazed window, extractor fan, shaver point.
OUTSIDE	
Front Garden	Tarmac hardstanding for car, flower beds.
Rear Garden	Of sunny aspect with patios, paved path, flower and shrub borders, timber shed, rear pedestrian gate to passageway with further gate giving access to garage area.
Garage Area	Garage with cantilever door.
Services	We understand that this property is connected to mains gas, electric, water and sewage.
Tenure	Freehold.
Council Tax	Band D.

Property Information

For information on broadband speed and mobile phone coverage for this property visit: <https://checker.ofcom.org.uk>
 For flood risk information visit: <https://www.gov.uk/check-long-term-flood-risk>



Full Energy Performance Certificate
available upon request

Appointment

Date:

Time:

Person Meeting:

These particulars, whilst believed to be accurate, are set out as a general outline for guidance and do not constitute any part of an offer or contract. Please note we have not tested any apparatus, fixtures, fittings, or services. Interested parties must undertake their own investigation into the working order of these items.

All measurements are approximate. Floor Plans are obtained from a third party and may contain inaccuracies. Photographs are for guidance only and may change over the course of marketing.

Information provided on lease terms, maintenance and ground rent have been provided by the vendor and you should ask your legal representative to confirm this information before exchanging contracts.