



7 Woodley Drive, Bampton



7 Woodley Drive

A wonderful opportunity to purchase this four-bedroom semi-detached home located in the popular village of Bampton.

Council Tax band: C

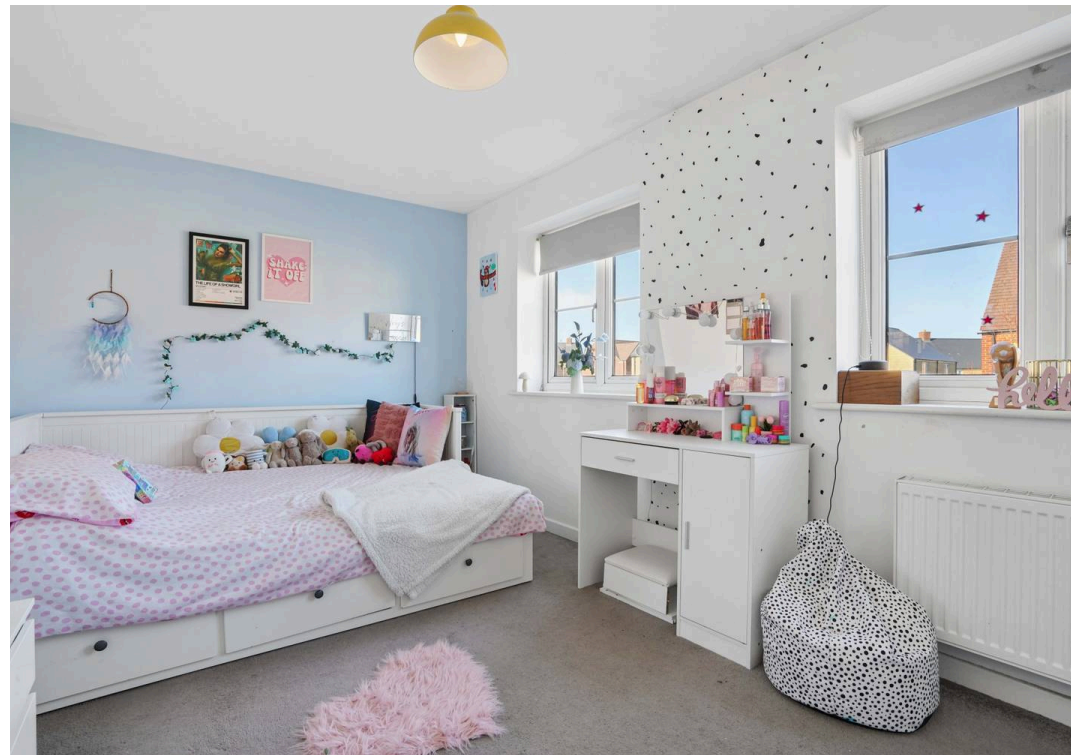
Tenure: Freehold

EPC Energy Efficiency Rating: B

EPC Environmental Impact Rating: B

- A beautifully presented four-bedroom semi-detached home located in the popular village of Bampton.
- Converted garage to study/fourth bedroom.
- Off-street parking.
- Fitted kitchen with integrated appliances.
- Sitting/dining room with french doors leading out to the garden.
- Modern bathroom with bath and shower over.





Woodley Drive - Bampton

Approximate Gross Internal Area = 98.6 sq m / 1061 sq ft
Store Room = 6.8 sq m / 73 sq ft
Total = 105.4 sq m / 1134 sq ft
(Excluding Car Space)

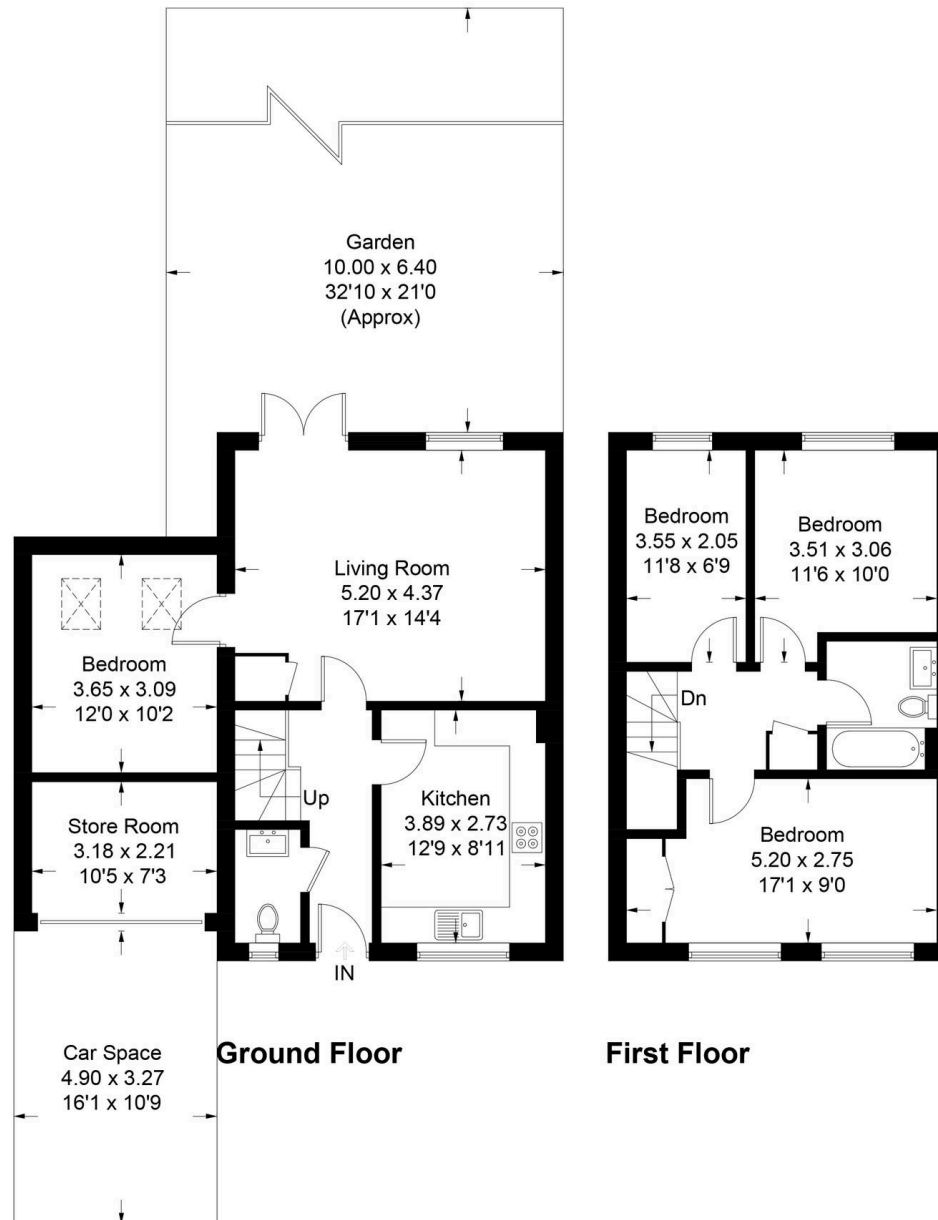


Illustration for identification purposes only, measurements are approximate, not to scale. Fourlabs.co © (ID1284770)



Simpsons Witney Branch

4 Langdale Court Witney, Oxfordshire - OX28 6AD

01993 835030 • witney@simpsonsproperty.com • www.simpsonsproperty.com/